



The Vista

INSIDE THIS ISSUE:

The Annual Meeting—Plans for 2024

Winter Activities

Cabin Bridge Road Closure



To conserve, support and protect the park's resources by promoting education, recreation, and stewardship.

82 Cabin Bridge Road
P.O. Box 62
Forksville Pa 18616
570-924-3287
friendsofworldsendsp@gmail.com

BOARD OF DIRECTORS:

Dave Engle – Chairman
Michael Scott - Vice-Chairman
Michlene Scott – Treasurer
Kyle Fawcett - Social Media
Dan Mumford - Secretary – Editor
Lisa Engle
Dave Kowalewski
Amaya Urtasun
Lisa Wilcox
Tom Yarnall
Ruth Rode – Honorary Director

Follow us on Social Media:

 [facebook.com/
friendsofworldsendsp](https://facebook.com/friendsofworldsendsp)

 [instagram.com/
friendsofworldsendsp](https://instagram.com/friendsofworldsendsp)

...and on the web...

www.friendsofworldsendsp.org

“There’s just something beautiful about walking on snow that nobody else has walked on. It makes you believe you’re special.”

Carol Rifka Brunt

The Friends of Worlds End State Park looked ahead to 2024 at the annual meeting on November 14 —see starting on page 3. We welcome Amaya Urtasun of Forksville to the Board of Directors. Also as we end the year, we thank our members, customers, local businesses and the surrounding community for their continued strong support!

There is some important 2024 news to share with you concerning a bridge closure that will impact park cabin users this coming autumn — see on page 6.

If you are looking for a Christmas gift for a local hiking enthusiast – check out our latest hiking guide and map, **Falls & Views Loop: Exploring the Wildness of Worlds End State Park and Loyalsock State Forest** - now on sale - see page 10.

Finally, we anticipate the season by looking at winter activities—hiking, cross country skiing, photography, etc. So don't hibernate this winter—celebrate— see starting on page 11. Have a fun and safe Christmas and a happy New Year 2024!



The Annual Meeting— Looking Ahead to 2024

The Friends of Worlds State Park gathered on November 14 with new Park Manager Matt Pecora to review the accomplishments of the past year and make plans for 2024. Highlights of 2023 include:

Winning the 2023 Pa Parks and Forests Foundation Volunteer Education Award.

Continued strong sales of firewood and ice...thanks to our customers and members!

Eliminating membership fees in 2023— now nearing 17,000 on our distribution list!

Over 190 students in the summer archery program!

Provided funding for summer amphitheater programs.

Four issues of THE VISTA and one special 5-year anniversary edition—available on our website.

Continued strong viewership of our website: www.friendsofworldsendsp.org



Plans for 2024 include:

- ◆ Continue funding for amphitheater programs.
- ◆ Nominating a local trail for PA’s “Trail of the Year.”
- ◆ Purchase three recurve bows to compliment the already 15 compound bows for the park’s summer archery program.
- ◆ Promoting our latest hiking guide *Falls & Views Loop: Exploring the Wildness of Worlds End State Park and Loyalsock State Forest*.
- ◆ More amphitheater improvements – including new fire pits!
- ◆ Trailblazers Dave Kowalewski and Ruth Rode continue work on their latest hiking guide and map project—focused on day-hikes in Sullivan County.

Look for details in future issues of THE VISTA as we move forward through 2024.

On the right:

Seated:

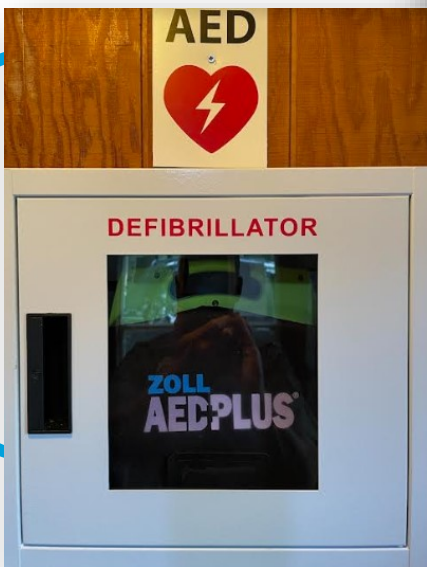
Michael Scott, Ruth Rode

Second row:

Michelene Scott, Lisa Engle,
Lisa Wilcox, Kyle Fawcett,
Jane Swift.

Back row:

Dan Mumford,
Dave Kowalewski,
Tom Yarnall, Dave Engle,
Matt Pecora



A generous donation by **Chesapeake Energy** made possible the purchase of a new AED device for the park’s family campground.

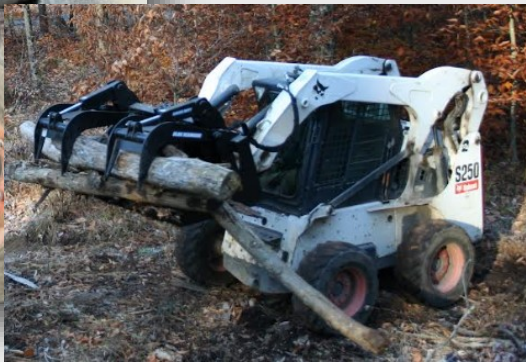


In 2023, the generous contributions and patronage of our members and the public made these park enhancements possible!

Park Environmental Educator and archery instructor Jane Swift stands next to archery equipment the Friends purchased and donated to the park. The park's summer-time archery program is very popular with park visitors of all ages.



To assist park maintenance staff, the Friends bought and donated to the park a grapple front-end attachment—pictured here at work!



Along with new lighting, the Friends purchased a drop-down screen for the park's amphitheater. The park staff also built additional cherry benches for additional seating. The cherry wood came from a tree that had fallen in the park, and was kiln-dried for free by Lewis Lumber. Park staff also installed new signage to direct visitors to the site.



FIREWOOD AVAILABLE THIS WINTER:

Firewood is available for sale in the cabin area this winter - \$8.00 per bundle. Look for the self-serve kiosk near the trash dumpsters on the right as you enter the cabin community on Cabin Bridge Road. Money from these sales funds the park improvement projects of the Friends of Worlds End State Park.



BECOME A DCNR CONSERVATION VOLUNTEER:

If you are interested in volunteering at the park, we encourage you to register. Registering brings you insurance coverage and the ability to track your volunteer hours. See more on DCNR's website:

<https://www.dcnr.pa.gov/Conservation/GetInvolved/Pages/default.aspx>

<https://www.volunteers.dcnr.state.pa.us/VolunteerApplication.aspx>

UPCOMING CABIN AND BRIDGE CLOSURE:

The bridge spanning Loyalsock Creek, which provides access to the cabin colony at the park will be undergoing a full super-structure replacement throughout October and November of 2024. As a result, reservations for the cabin colony and group tenting sites at the Park will be unavailable during October and November of 2024. The closure of Cabin Bridge Road will also result in the rerouting of the Loyalsock Trail. Affected hikers should contact the park for more information. The park campground, located along Route 154, will not be impacted and will be open for its normal operating season dates.

For more information, contact Worlds Ends State Park at 570-924-3287 or by email at worldsendsp@pa.gov.

Project dates are subject to change, so monitor the park's social media and future issues of THE VISTA for updates.



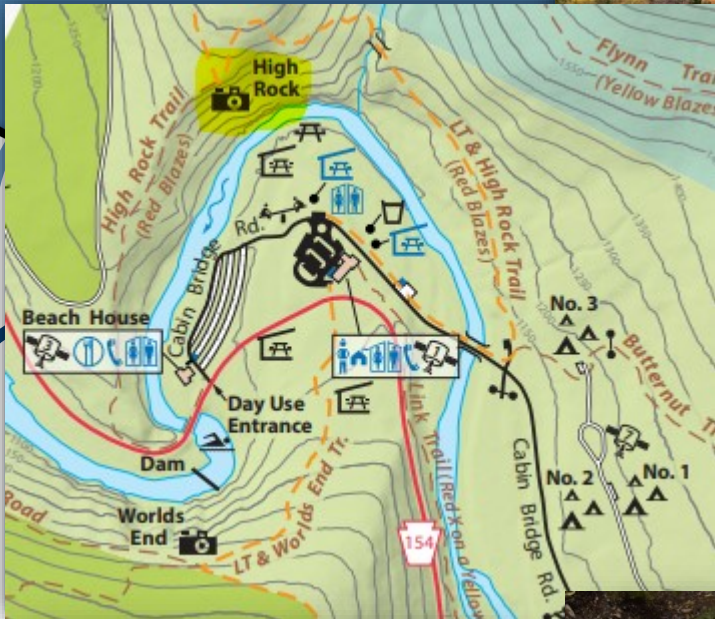
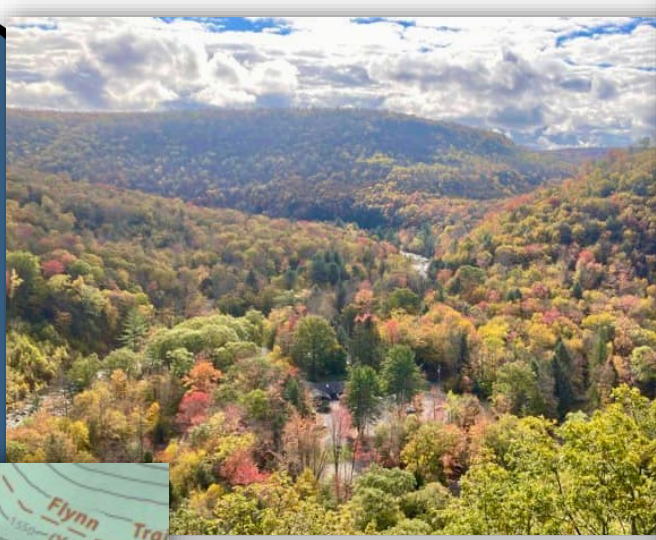
Above: The bridge has taken several hits from various flooding events over the years - here is the aftermath of the September 2011 flood.





Improved Views of Worlds End

Park staff this autumn opened up the view from **High Rock Vista**. This vista can be reached using the High Rock Trail and/or the Loyalsock Trail. It provides an east-ward looking view of the park. See highlighted on the map below:



A bench “In honor of Betty and Louis Kiscunas” has been installed at the **Loyalsock Canyon Vista**. This vista can be reached by car via Mineral Spring Road or by foot via the Canyon Vista, Link or Loyalsock Trails.





Hellbender License Plate Now Available

On October 2, Department of Conservation and Natural Resources (DCNR) Secretary Cindy Adams Dunn and Pennsylvania Fish and Boat Commission (PFBC) Executive Director Tim Schaeffer celebrated the recently launched Eastern hellbender license plate, which honors the state amphibian and supports the Wild Resource Conservation Fund.

The Eastern hellbender is the largest salamander in the United States with some reaching a weight of more than two pounds and extending an impressive length of two feet. It became Pennsylvania’s state amphibian in 2019, a designation that promotes the need to restore water quality and preserve habitat for the amphibian.

“Honoring the Eastern hellbender with a license plate is a great way to raise awareness about our state amphibian and the work the Wild Resource Conservation Program does to protect our rare plants and animals,” DCNR Secretary Cindy Adams Dunn said. “Thank you to DCNR staff, the Pennsylvania Fish and Boat Commission, the Chesapeake Bay Foundation and its Student Leadership Program, Senator Gene Yaw, and all of the partners who helped make this license plate possible.”

“Because of its recognizable name, impressive size, and fascinating appearance, the Eastern hellbender has become a wonderful ambassador for Pennsylvania’s rich diversity of native fish, reptiles, and amphibians and other aquatic species,” said Tim Schaeffer, PFBC Executive Director and Chairman of the Wild Resource Conservation Program. “While many of these animals are so rare that most Pennsylvanians may never see one in the wild, this license plate is a visible reminder that all species are a valuable parts of Pennsylvania ecosystems and are worth protecting. The Eastern hellbender is also a relevant and charismatic barometer of local water quality.”

For more information and to how to get this new plate, see PennDOTs website:

<https://www.dmv.pa.gov/VEHICLE-SERVICES/Registration%20Plates/Special-Fund/pages/default.aspx>



New State Forest Land Acquired



2,500 Acre Miller Mountain Property Added to Pinchot State Forest

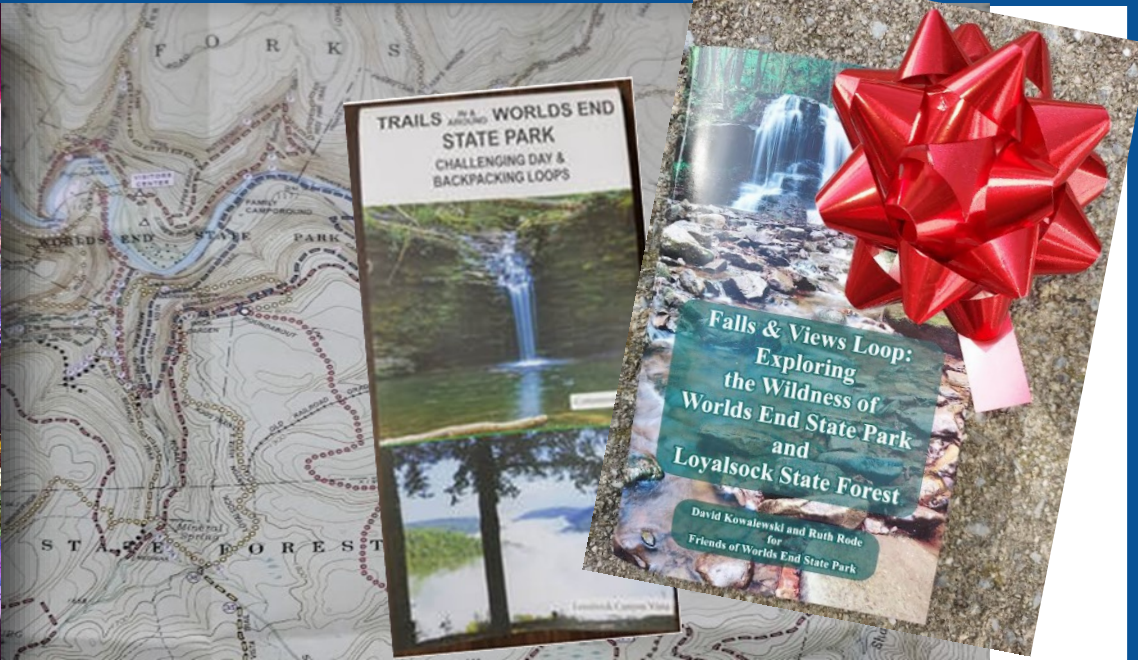
The Department of Conservation and Natural Resources announced on November 21 that it has added the 2,500-acre Miller Mountain property in Wyoming County to Pinchot State Forest. This acquisition marks the first state forestland in Wyoming County, following shortly behind the 2022 addition of Vosburg Neck State Park, the first state park in the county.

“We are excited to finally be able to add state forestland to the region and once again announce a first for Wyoming County as we did with Vosburg Neck last year,” Secretary Cindy Adams Dunn said. “I cannot wait to view the area from the top of Miller Mountain and take in the beautiful sights provided from its vistas. Thank you to The Conservation Fund for the tireless work on this project and for conservation across the nation.”

The distinct mountain landscape supports headwater streams of the Susquehanna River and is critical habitat for migratory birds, black bears, white-tailed deer, and bobcats. The 2,216-foot peak is believed to be the last remaining undeveloped peak of its size in Pennsylvania that had been privately owned. The mountain is open to the public, however DCNR is establishing the state forest boundary lines and assessing the property for public access and recreational opportunities.

Funding from DCNR’s Bureau of Forestry via the Keystone Fund, along with funding from Williams Companies in connection with the construction and operation of the Atlantic Sunrise natural gas pipeline project, made the permanent protection of this forested landscape possible.

For more information: https://www.media.pa.gov/Pages/DCNR_details.aspx?newsid=1039



Need a gift for that hiker on your list?

A great gift for local hiking enthusiasts is our newest and most comprehensive hiking guide that features Worlds End and the surrounding Loyalsock State Forest ***Falls & Views Loop: Exploring the Wildness of Worlds End State Park and Loyalsock State Forest***. This is a 70-page guide with 3 maps detailing over 77 miles of trails. The ***Falls & Views Loop*** passes more than 90 seasonal falls and 40 views. The first 18 pages provide general reference information concerning the park and forest – followed by over 50 pages of detailed turn-by-turn directions highlighting waterfalls, views, geological features, trail registers, water sources, and alternate routes. Shorter loop options are also provided for those unable to complete the entire trail in one outing – including day-hike and 2-day hiking options – or even an afternoon! Local history is also highlighted – learn about the history of coal mining, railroading and the Civilian Conservation Corps here in Sullivan County among many other things.

Also available is the smaller ***Trails in and Around Worlds End State Park*** that features shorter hikes centered on the park and the forest immediately surrounding the park.

These maps and guides are available from:

- *The Worlds End State Park Office*
- *The Sullivan Review* (<https://thesullivanreview.com/maps/>)
- *Otto's Bookstore in Williamsport.*
- *Keystone Trails Association* (<https://www.kta-hike.org/>)





Winter Wonders!

Above: Double Run

Admittedly the winter is more difficult. The cold. The weak sun. The short days. Winter takes a lot more effort. The hats, gloves, boots, scarfs, and so on. For those that bask in the warmth and green of the warmer months, the bare, cold landscape can take some getting used to. But if you give it a try, and meet the season on its own terms, you may be surprised at the stark beauty you discover. Few things are as lovely as a freshly fallen snow draping the trees in the forest. And with less foliage blocking your view, you may be surprised at how far you can see and the things you might have missed in a different season. And there are other benefits—like no insects! To help you plan your winter outings, there is a lot of information online, starting with the Pennsylvania state parks Winter Report. This report allows winter outdoor recreation enthusiasts to monitor snow and ice conditions in state parks. The Winter Report is updated weekly (at a minimum) by state parks during the winter season. The report lists the ice thickness and what ice activities are available at that park. Sometimes a park can have ice, but if it is not thick enough, then the activities are not available. The report also lists the snow thickness and what snow activities are available at that park. The report is searchable by park and by recreation activity:

<https://www.dcnr.pa.gov/StateParks/WinterReport/Pages/default.aspx>

Check out winter activities and conditions at :

<http://maps.dcnr.pa.gov/storymaps/winteractivities/#overview>

Cross-country skiing information can also be found:

<https://www.dcnr.pa.gov/Recreation/WhatToDo/Cross-CountrySkiing/Pages/default.aspx>

Information on the Double Run Ski Trail:

elibrary.dcnr.pa.gov/GetDocument?docId=2858643&DocName=Double Run Ski Trail - Forestry Trail Guide 8-5x14 Portrait.pdf

...and the Old Loggers Path Trail...

http://elibrary.dcnr.pa.gov/GetDocument?docId=1741648&DocName=sf-OldLoggersPathTrail_fd20.pdf

Loyalsock State Forest & Worlds End State Park Snowmobile Trails:

<https://trails.dcnr.pa.gov/trails/trail/trailview?trailkey=678.pdf>

Below: a snow-covered Double Run Nature Trail.



Loyalsock State Forest & Worlds End State Park Snowmobile Trails:

<https://trails.dcnr.pa.gov/trails/trail/trailview?trailkey=678>

...and to book a cozy cabin at the park...

<https://pennsylvaniastateparks.reserveamerica.com/>



Photography

in the winter can be challenging— but if you keep a few things in mind, you can capture the magic of the season—like a freshly fallen snow draping the trees. People are often disappointed when they photograph snowy scenes—the pictures come out dark or grayish. This is because cameras, even expensive high-end cameras, have difficulty handling the color white. The exposure meter in the camera sees the color “white” ... and mistakes it for “light” ... and ends up thinking the scene is lighter than it really is...leading it to underexpose the photo. There are ways around this limitation. Some cameras may have a special “snow” setting—check yours and use it in snowy scenes. Another option is to not rely on the camera’s automatic exposure setting. Instead, if your camera has a MANUAL exposure setting—use it—and then deliberately overexpose the photo. Take several shots of the same scene at several different exposures to increase the chances that you will get a “correct” exposure. Another thing to be aware of is that the cold can effect your camera and its battery life. When not taking a picture, tuck the camera into your coat to keep it warm and working effectively—and take spare, back-up batteries in case the cold drains your battery. And if your camera has interchangeable lenses, rather than using a variety of fixed focal length lenses, use a zoom lens to cut down on condensation entering the camera body when changing lenses.

Below: Double Run





Winter Safety

Above: the swimming area at the park—and you thought the water was chilly in July?

- The winter days are not only cooler – but also shorter. Make sure you plan your outings so that you are out of the woods well before the early sunsets.
- There is little if any cell service in the park nor in most of the surrounding forest. Make sure someone knows where you are and when you expect to return.
- The air temperature in the park and the mountains can be significantly colder and windier than in the towns and valleys. Check the local weather forecast before you head outside.
- Dress in layers. As you move around and get warmer, you can always remove a layer – or add additional layers as needed. And wear a hat!
- Warm, sturdy footwear and socks are essential if you are hiking.
- Winter air can not only be cold – but also very dry. Stay hydrated!
- Know the trails you are hiking – have a map (available at the park office) and/or a GPS device—keeping in mind that using your cell phone to navigate may not be possible.
- Before venturing out on ice on a creek or pond, make sure you know how thick the ice is and whether it can support your weight. Thickness of ice on creeks can vary widely from spot to spot.
- Trails on the north side of mountains or in deep hollows can be snowier and icier than other trails. On snow and ice, boot spikes or crampons may be necessary. Hiking/trekking poles or ice axes can also help in such conditions. **However, sometimes such trails are impassable even with special equipment and need to be avoided.** Check with the park or forest office about trail conditions.

DON'T GET STRANDED! When setting out on your winter adventures, take some thought about how you are going to get to your destination and road conditions. Monitor local weather forecasts to ensure you do not end up driving in bad weather. You can check road and traffic conditions on www.511pa.com.



Also, many state forest and game land roads are not maintained in the winter – meaning that they are not plowed, salted or treated. These roads can be impassable in snow and ice conditions, even for trucks and 4-wheel drive vehicles. Many of these roads are also used by snowmobiles – which can pack any snow so solid that other vehicles may not be able to safely use the road. In recent years, a number of vehicles have been stranded on such roads. Many towing operators will not take their tow trucks on these roads, out of fear of being stuck. As a result, your vehicle could be stranded until the next thaw! Also be aware that some vehicle navigation/GPS systems will sometimes direct you to use these roads, not knowing that they are unfit for travel. For the condition of state forest roads, contact the office for the state forest you plan on visiting. The Loyalsock State Forest office can be called at 570-946-4049 during their office hours: Monday - Friday, 8:00 A.M. - 4:00 P.M.

DECEMBER AND JANUARY ARE HUNTING MONTHS!

If you are planning any outings in the forests, keep in mind that December and January are rifle and archery hunting months—including the Christmas and New Years holiday weeks. Hikers and bikers should wear at least one piece of orange clothing that is visible from all directions, such as a hat, jacket, or vest. Also, consider covering your backpack with orange. Don't forget your pets! Dogs should wear blaze orange or another highly visible colored vest, leash, collar, harness, or bandana. Horseback riders should also wear a blaze orange vest or hat and use an orange vest or rump sheet on your horse.

On the right: Friends of Worlds End State Park Board member Dave Kowalewski and Tuck model the appropriate hiking apparel during hunting season.



Join the
**Friends of Worlds
End State Park**

for **FREE!**

All we need is your email address so that we can email you the THE VISTA four times a year!

To get on our email list, see our website:

<https://www.friendsofworldsendsp.org/mailling-list>

Of course we always welcome contributions! To contribute, see our website: <https://www.friendsofworldsendsp.org/donate>

If you prefer to donate by mail, please make checks payable to the PPF and include Friends of Worlds End on the memo line. Checks should be mailed to:

**Michelene Scott, Treasurer
Friends of Worlds End State Park
PO Box 62
Forksville, PA 18616**



The Friends of Worlds End State Park is a Chapter of the Pennsylvania Parks & Forests Foundation, which is a 501(c)(3) non-profit organization—contributions to which are tax deductible to the fullest extent of the law. No goods or services were received in exchange for this contribution. The official registration of the Pennsylvania Parks & Forests Foundation may be obtained from the Pennsylvania Department of State by calling toll free within Pennsylvania 1-800-732-0999. Registration does not imply endorsement.

PHOTO CREDITS: Cover – Water Beach Pool Falls on Double Run by Kyle Fawcett; Page 2: Kyle Fawcett; Page 3: Kyle Fawcett, Dan Mumford, Barbara Falci; Page 4: Barbara Falci; Page 5: Jane Swift; Page 7: Ken Jones, Dan Mumford; Page 9: DCNR; Pages 11 - 14: Kyle Fawcett; Page 15: Dave Kowalewski ; Page 16: Kyle Fawcett.