

The Newsletter of the Friends
of Worlds End State Park

Vol. 4 No. 2
Spring 2022

The Vista

More **Waterfalls of Sullivan County!**

To conserve, support and protect the park's resources
by promoting education, recreation, and stewardship.



82 Cabin Bridge Road
PO Box 62
Forksville, PA 18616

570-924-3287
friendsofworldsendsp@gmail.com

CELEBRATE SPRING 2022!

We have much to celebrate this time of year! Spring means the mountains once again turning green, melting snow, frequent showers, and fully flowing streams – perfect conditions for celebrating spring by exploring waterfalls! Last spring in *The Vista* we highlighted several waterfalls found at Worlds End State Park and the surrounding Loyalsock State Forest (see spring 2021 edition of *The Vista* – available on our Facebook page). This spring we add to that list of waterfalls – starting on page 15.

We continue our celebration of Worlds End 90th anniversary by looking at more history of the park – focusing on the bridges found in the park – see page 10 – and we look back at kayak racing – see page 9. And speaking of the anniversary celebrations, see page 14 for more about **WORLDS END DAY 2022** on Saturday July 30! And just in time for the big celebration, finishing touches are being applied to the new **AMPHITHEATER** – see page 5.

But first – we sadly say goodbye to long-time Worlds End State Park Manager **Bill Kocher** – but congratulate him and wish him well in his new position elsewhere – see page 3. We also have a new park manager to welcome this spring – see page 13!

BOARD OF DIRECTORS:

Dave Engle – Chairman
Michael Scott - Vice-Chairman
Micheline Scott – Treasurer
Kyle Fawcett - Social Media Outreach
Dan Mumford - Secretary – Editor
Lisa Engle
Dave Kowalewski
Lisa Wilcox
Tom Yarnall

Follow and Like us on Social Media:



facebook.com/
friendsofworldsendsp



instagram.com/
friendsofworldsendsp

Farewell and Best Wishes to Park Manager Bill Kocher!

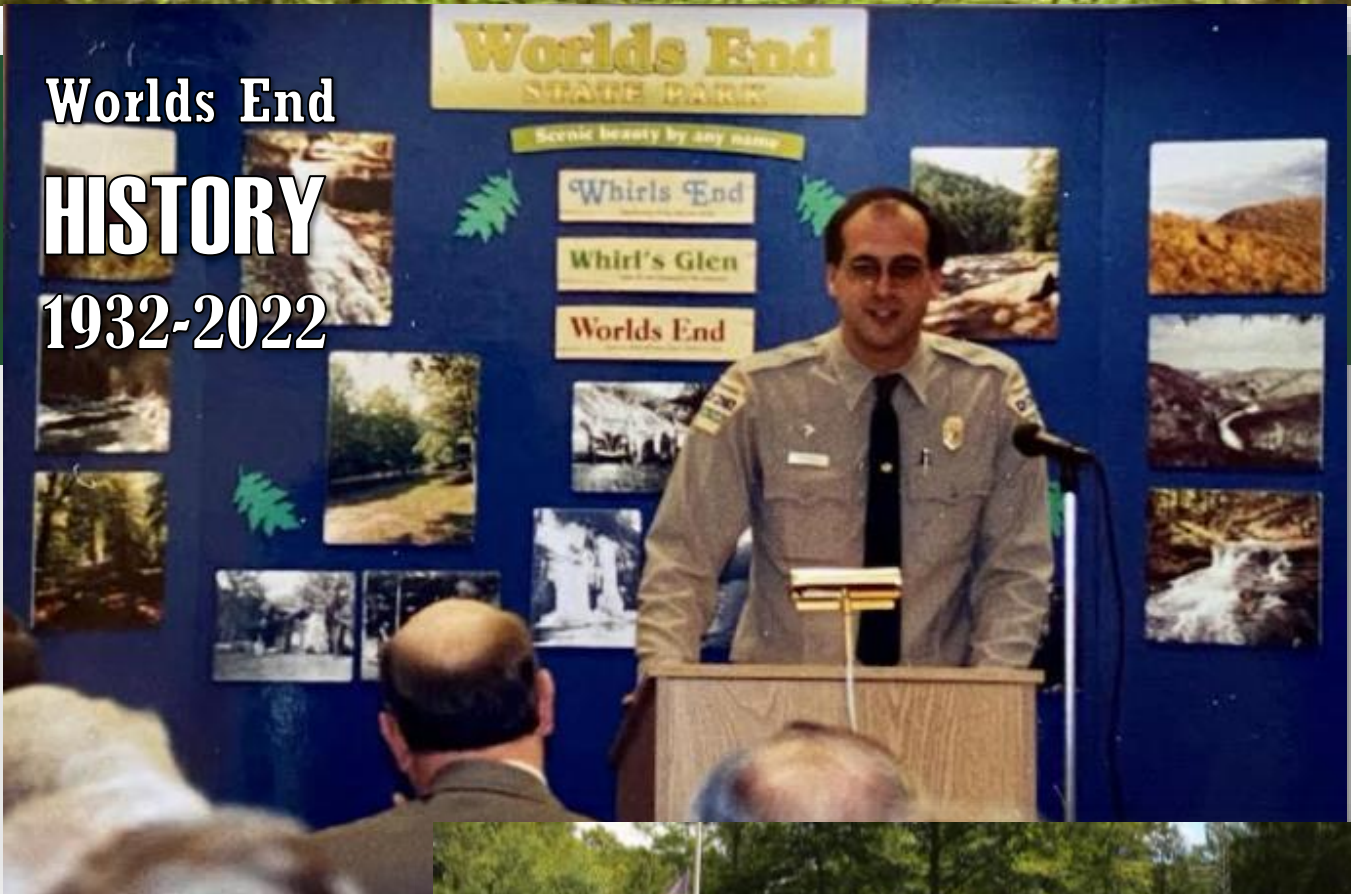
In January we said goodbye to Worlds End State Park Manager Bill Kocher, who after twenty years of service to the people of the Commonwealth here at the park, accepted the position of Operations Manager at Bald Eagle State Park in Centre County.

The Friends of Worlds End State Park thank Bill for his long years of service here at the park and his dedicated and conscientious stewardship – preserving and enhancing this beautiful piece of the Endless Mountains for all of us and future generations. We also thank him for his generous support of our group – without such we would not have succeeded in establishing ourselves and achieving all we have. We wish him well at Bald Eagle State Park!

Below: Bill enjoying the view of the park at Warren's Window along the Canyon Vista Trail. Right: Speaking this past June when the park was inducted into the Old Growth Forest Network.



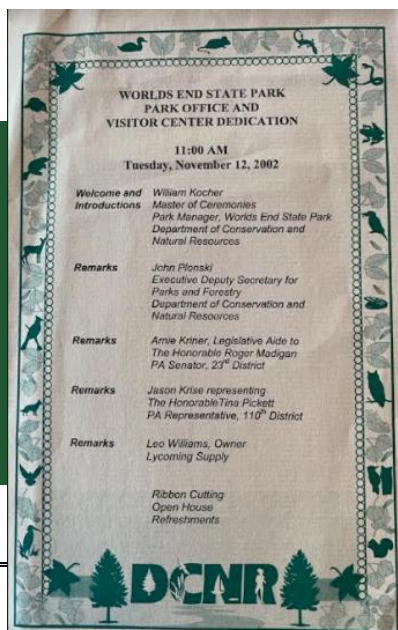
Worlds End HISTORY 1932-2022



One of Bill's first duties when he started in 2002 was overseeing the completion of the park's new visitor center (right) – and serving as Master of Ceremonies at the November 12, 2002 dedication event (above).



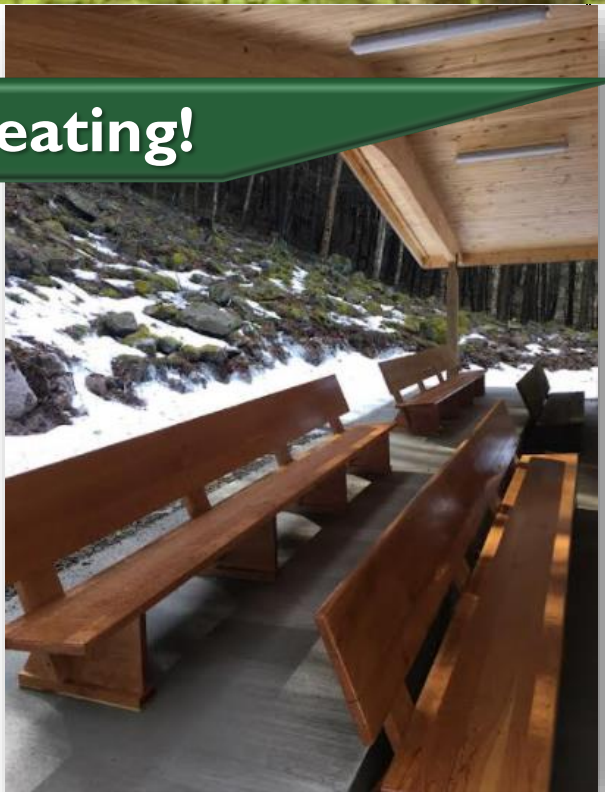
Below: *Bill in his office at the brand-new visitors center.*



Amphitheater Update: New Seating!



The new campground amphitheater – purchased by the Friends of Worlds End State Park – is nearing completion - in time for the park's 90th anniversary celebrations this summer! In the cold weather months, park staff have continued working – constructing the new seating. The benches are crafted of cherry wood sourced from a tree that fell last year. Lewis Lumber generously offered to dry the timber in a kiln for 2 months over the winter. Our thanks to Lewis Lumber for this service – and to the park staff for their beautiful work on the seating for the amphitheater.



Benches were crafted in the park's workshop over the winter.



Watch ours and the park's social media for the date and time of the amphitheater opening / dedication ceremony later this spring or early summer!

ARCHERY CLASSES RETURN THIS SUMMER:

Last year's popular archery course returns this summer! If you have ever wanted to explore archery – here is your opportunity. Certified Archery Instructors Jane Swift and Mike Scott will once again be offering archery instruction at the park this summer with an emphasis on safe archery practices. The park will provide the equipment you need. Check out the summer edition of THE VISTA and the park's social media for dates and times of this summer's classes.

Ages: 9 – 90

Location: Point Pavilion.



FIREWOOD AVAILABLE:

Firewood is available for sale in the campground and cabin area this spring and summer - \$8.00 per bundle. In the campground, look for the self-serve kiosks near the Loop A and Loop B shower-houses - and in the cabin area, near the trash dumpsters on the right as you enter the cabin community on Cabin Bridge Road. Money from these sales funds the park improvement projects of the Friends of Worlds End State Park.



TROUT SEASON OPENS SATURDAY APRIL 2.

Spring means the return of fishing season – with this year featuring a single, statewide opening day – April 2. The statewide Mentored Youth Trout Day is Saturday, March 26, 2022.

For details on the season, check out the PA Fish and Boat Commission's website:

<https://www.fishandboat.com/Fish/PennsylvaniaFishes/Trout/Pages/TroutSeasonOverview.aspx>

... and get your license...

<https://www.fishandboat.com/Fish/FishingLicense/Pages/BuyAFishingLicense.aspx>

...and stocking schedules...

https://fbweb.pa.gov/stocking/TroutStockingDetails_GIS.aspx





2022 WORLDS END ULTRAMARATHON.

The 50K and 100K Worlds End Ultramarathon is Saturday, June 4, 2022...with the 100K race setting off at 5:00am!

For information about the race:

<https://worldsendultra.com/>

...and volunteering to help:

<https://runsignup.com/Race/Volunteer/PA/Forksville/worldsendultra>

GRINDURO International Cycling Event Coming to Sullivan County – Weekend of June 11!

The Grinduro comes to the Sullivan County Fairgrounds this summer – and features a 60-mile cycling route highlighting the best of the Endless Mountains - pioneer roads, historic logging towns, covered bridges, scenic vistas and logging trails deep into the forests that combines the elements of a mountain bike enduro with a gravel grinder-style road race. Festivities include displays of art and music, food, people and camping! To find out more about this event and how to volunteer to assist, see the Grinduro website:

<https://grinduro.com/pennsylvania.php>



BECOME A DCNR CONSERVATION VOLUNTEER:

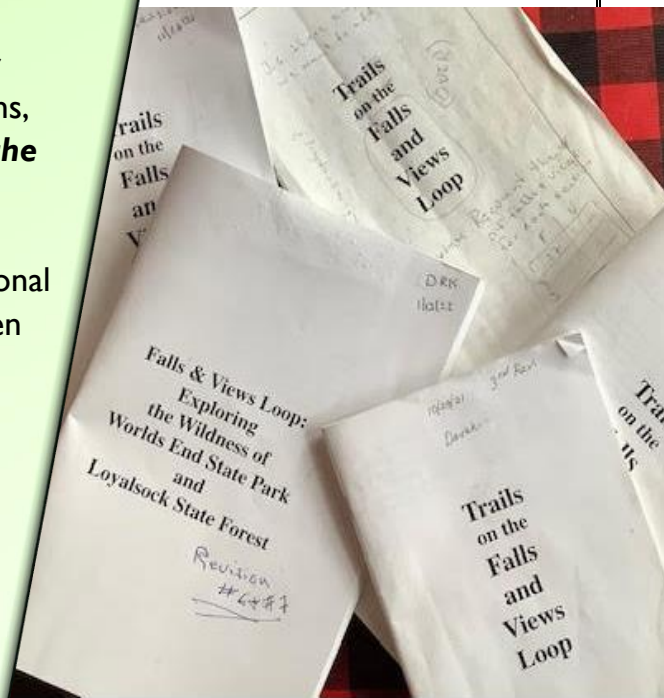
If you are interested in volunteering at the park, we encourage you to register. Registering brings you insurance coverage and the ability to track your volunteer hours. See more on DCNR's website:

<https://www.dcnr.pa.gov/Conservation/GetInvolved/Pages/default.aspx>

<https://www.volunteers.dcnr.state.pa.us/VolunteerApplication.aspx>

ALSO COMING THIS SUMMER:

Trailblazers Ruth Rode and Dave Kowalewski continue their work on a new trail map and guide. Divided into five sections, the challenging 77.81-mile **Falls & Views Loop: Exploring the Wildness of Worlds End State Park and Loyalsock State Forest** starts and ends at Worlds End State Park's Visitors Center. The **Falls & Views Loop** passes more than 90 seasonal falls and 40 views, hence the name. Linking almost two dozen blazed and maintained trails, the **Falls & Views Loop** will challenge the hiker with multiple bushwhacks, numerous stream crossings and steep ascents and descents. Fear not the bushwhacks, as there are alternate routes that utilize established, maintained, and blazed trails. Shorter loop options will also be provided for those unable to complete the entire trail in one outing. The color-coded guide accompanying the map will include turn-by-turn directions. Look for updates in the next issue of *The Vista*!



While on your spring hiking outings, look for TRILLIUM – usually blooming in late April to mid-May. These flowers prefer moist hillsides – making the Cold Run Trail, especially near the waterfalls, a good location to find it (see page 17 for more about the Cold Run Trail). An odd thing about the Red Trillium (photos on the right and below left) – it does not smell like a flower. Instead, it smells more like rotting meat – as to attract flies, instead of bees, for purposes of pollination. Photo on the below right is a rarer Painted Trillium.



Worlds End HISTORY 1932-2022

Kayak Racing at Worlds End!

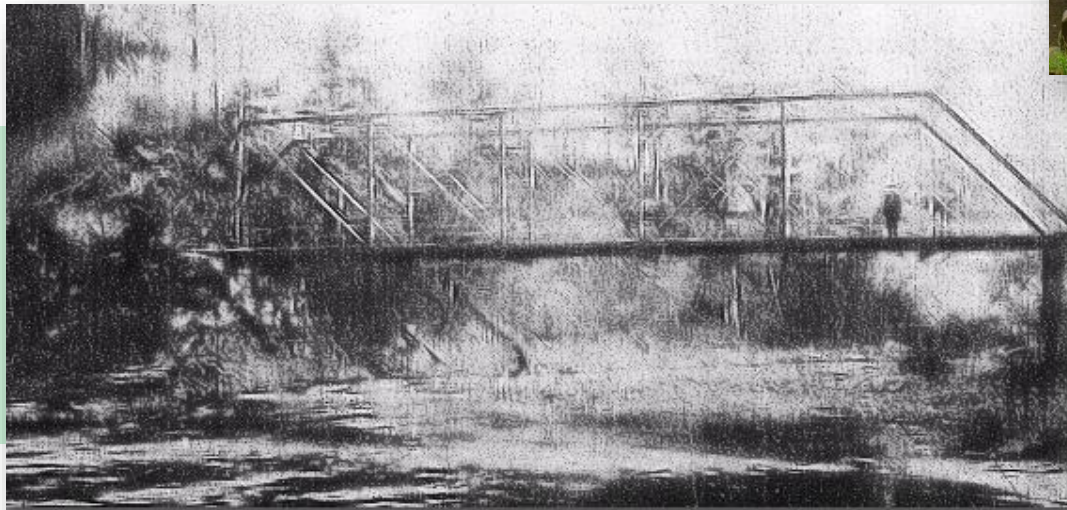
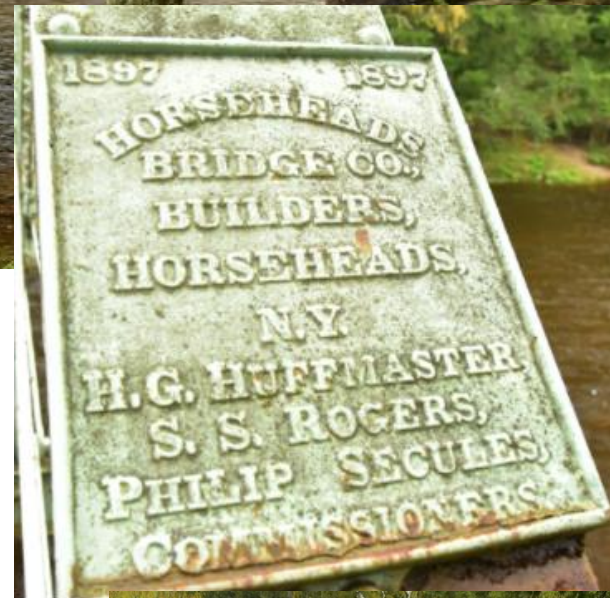
The Loyalsock at Worlds End, for most of the year, is unsuitable for kayaking. It is either flowing too low or is ice-choked. But in late winter/early spring during the snow melt, the Loyalsock can become a raging whitewater river. Worlds End has hosted kayak racing in the past – with the starting point at the swimming area, and kayakers having to pass through the surging spillway of the dam on their way downstream. Note that pictured here are not the typical recreational type of kayak – these are shorter, whitewater kayaks built for that purpose.



Worlds End
HISTORY
 1932-2022

Bridges to the Past

You may recognize the bridge over the Loyalsock in the picture above if you have ever been on Rock Run Road on the way up to Sones Pond. You may have noticed that it is an old bridge – but most people do not realize just how old – and that the bridge has a connection with Worlds End State Park! Rock Run Road is not this bridge's original location – for this was in fact the first bridge to cross the Loyalsock at Worlds End. When a road was finally routed through the Loyalsock Canyon at Worlds End near the end of the 19th century, this was the bridge built to cross the creek at what is now the beach area of the park. Until then, the only road was high up on the mountainside – what is now called the Pioneer Road Trail.



This old photo on the left shows the Iron Bridge at its original location at the park near the beach – where the Rt. 154 bridge is now located.

This Iron Bridge was torn down around 1932 and relocated to Rock Run Road – where it served as access to Civilian Conservation Corps Camp No. 95 – which was located to the right as you come off the bridge.

To the right: the second bridge built across the Loyalsock at Worlds End. This bridge replaced the Iron Bridge in 1932 just as Worlds End State Park was being established. The park's beach area can be seen to the right of the bridge in this picture from the 1930's.



The current bridge (above right) replaced an open-grate bridge (above left) in the 1990's. This bridge won PennDOT's 1995 Excellence in Transportation Design/Construction Award (<https://www.larsondesigngroup.com/projects/worlds-end-state-park/>).



Of course, there is also a second bridge across the Loyalsock at Worlds End – the bridge on Cabin Bridge Road. The bridge currently there is the second bridge at that location.

The original bridge on Cabin Bridge Road, as you can see in the photo to the left, was narrow and not very high – and supported by four piers.



The bridge being so low, and with four piers that could block water and ice flows, led to the bridge being overtopped at times during snow and ice melting events – as seen in these photos.



In 1983 this bridge was replaced by the current bridge located just upstream – which is higher above the water and has no piers – see photos on the right. The photo on the bottom right shows the new bridge nearing completion – with the old bridge still visible “underneath” it.

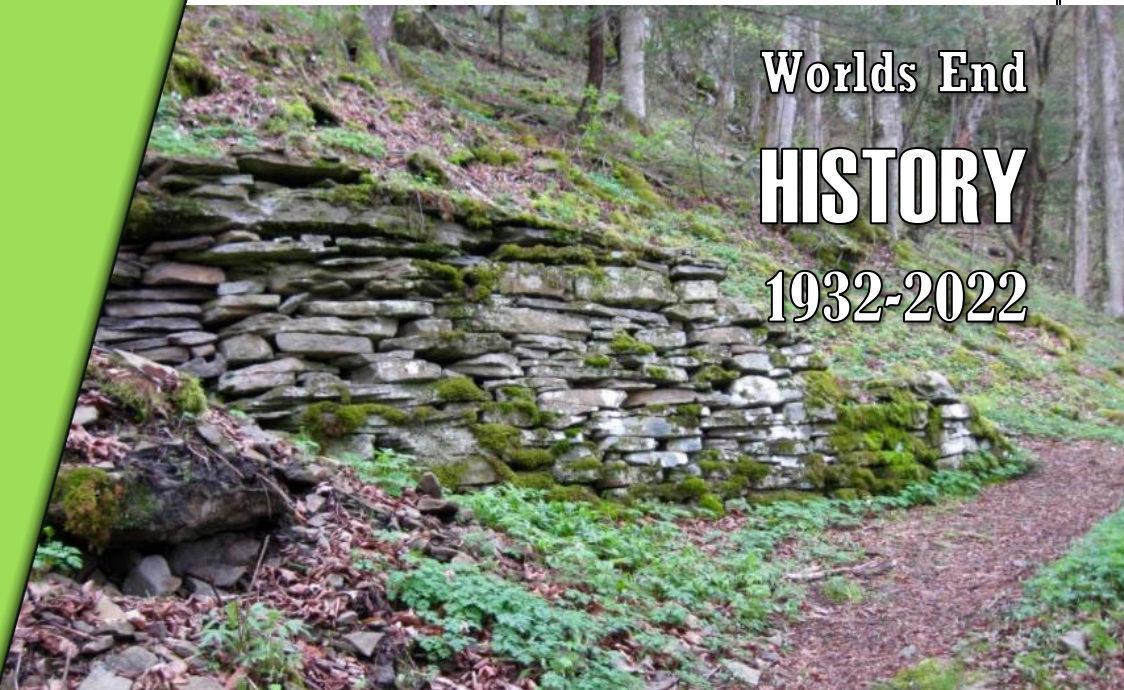


For more about the *Pioneer Road*, *Corson Road*, the *Civilian Conservation Corps* and *Camp # 95*, see the Winter 2022 edition of **THE VISTA** – available on our Facebook page.

NEW PARK MANAGER NAMED:

Chad McKenrick has been named as the manager of Worlds End State Park, and started in his new role on February 12. He comes from Sinnemahoning State Park in Cameron County, and replaces former manager Bill Kocher (see pages 3 – 4). See the next issue of *The Vista* for more about Manager McKenrick as he assumes the leadership of your favorite park!

While hiking high up on the mountain above the park's swimming area on the Worlds End Trail, you may see rock walls like the one in the picture to the right. These rock walls were built in the early days of the park in the 1930's by the Civilian Conservation Corps (CCC) – who built this trail to the coal mine camps on top of the mountain.



Worlds End
HISTORY
1932-2022

Our thanks for the information, photos and history provided by Worlds End State Park management and staff, including Environmental Educator Jane Swift and former Manager Bill Kocher.

Also, our thanks to Ruth Rode and her extensive knowledge of Sullivan County history and her historical archives and photos.

90th
Anniversary
Worlds End
State Park
1932 – 2022

COMING SATURDAY JULY 30:
WORLDS END DAY 2022

Celebrating Worlds End 90th Anniversary!



**FRANLIN KLOCK of the Carbon
County Environmental Education
Center with EAGLES!**

**MICHAEL KURIGA
with a FALCON!**



**VAN WAGNER – A Celebration
of Music and History!**



REPTILAND!



Feature Article

A photograph of a multi-tiered waterfall cascading down a rocky cliff in a lush forest. The water is white and frothy as it falls over the rocks. The surrounding area is covered in green moss and small plants. The background is filled with dense green foliage and trees.

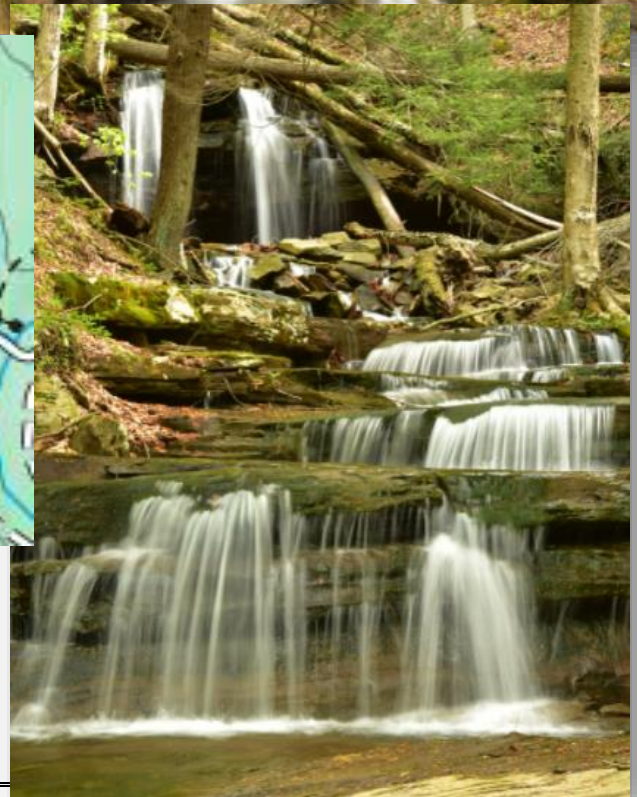
Waterfalls of Sullivan County

On the previous page...

Angel Falls

Gipson Falls

We start our spring 2022 tour of waterfalls with the tallest falls in the Loyalsock State Forest – **Angel Falls** on Falls Run at 70+ feet! Just downstream are **Gipson Falls** followed by an un-named falls. To get to **Falls Run**, park at the lot where the Loyalsock Trail crosses Brunnerdale Road, and hike the trail to the top of the mountain. You will come to an intersection with a blue-blazed trail to the left that will cross the stream and then take you to the top of Angel Falls.

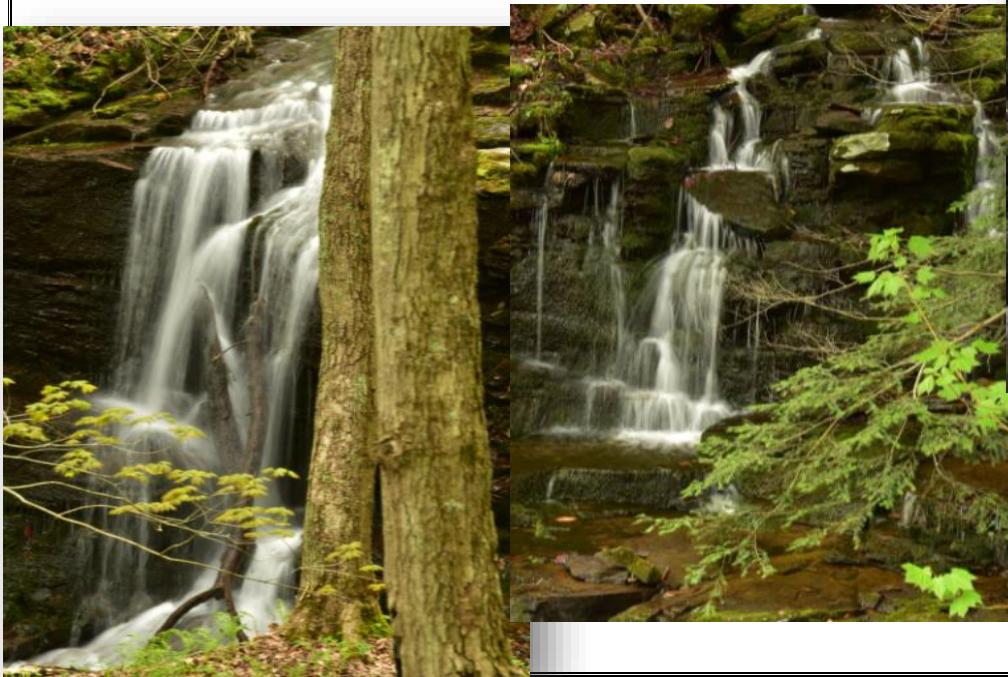


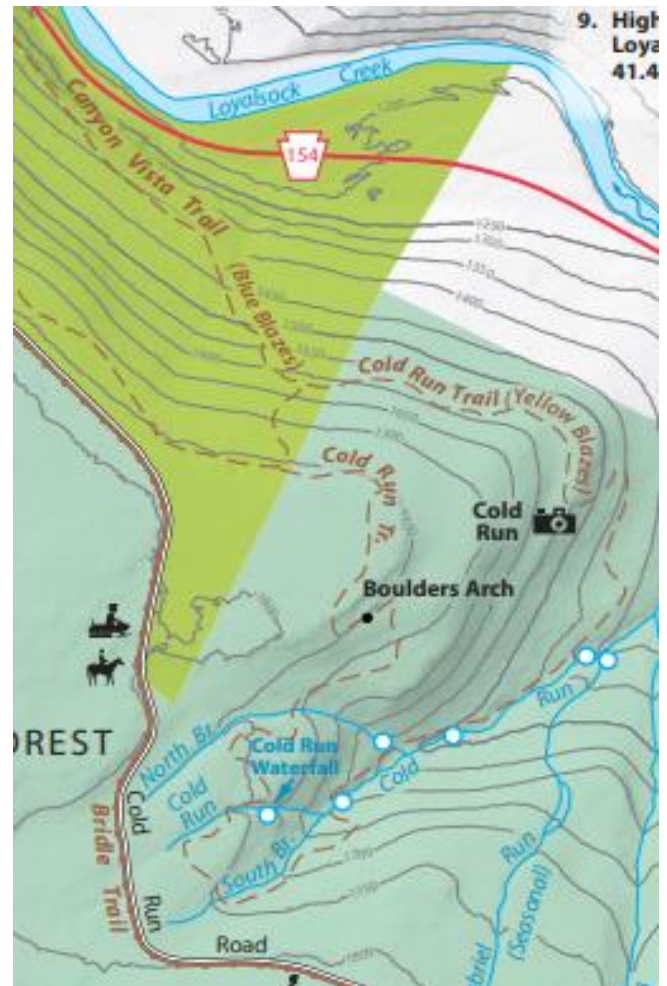
The lower falls on Falls Run



The Falls Along the Cold Run Trail

The relatively new **Cold Run Trail** has become a popular hiking destination due to its many scenic features, including a vista, large rock formations, and numerous waterfalls. Cold Run splits into several forks, and there are falls along most of the forks – which the trail guides you to. Cold Run is a low-flow stream, so if you want to see the waterfalls at their best, it is best to hike this trail in spring after the snow-melt or during and right after a good rain.





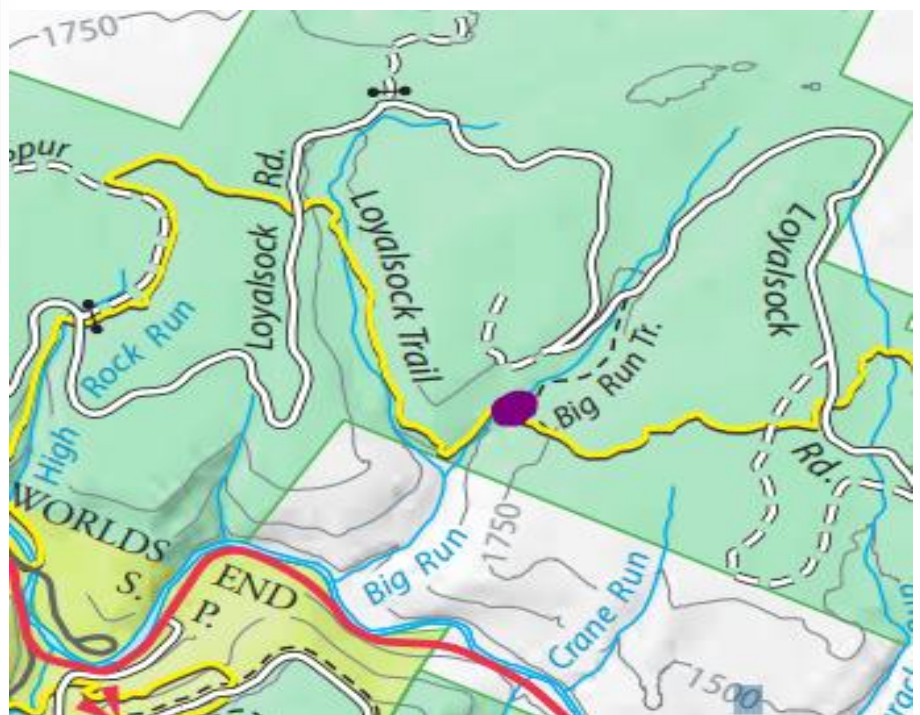
The **Cold Run Trail** is a loop trail accessed via the **Canyon Vista Trail** in the far eastern part of the park. You can park at the **Loyalsock Canyon Vista**, then hike the **Canyon Vista Trail** until you see the signs for the **Cold Run Trail**. Because it is a loop trail, it does not matter which direction you go – you will see the same features and will be returned to the **Canyon Vista Trail**. The recently updated *RECREATION GUIDE FOR WORLDS END STATE PARK* – available at the park office for free – features this trail with the waterfall locations marked (see above).

For more on the **Cold Run Trail** and its recent construction by trailblazer Warren Renninger, see the Spring 2020 edition of **THE VISTA** – available on our Facebook page.

Alpine Falls

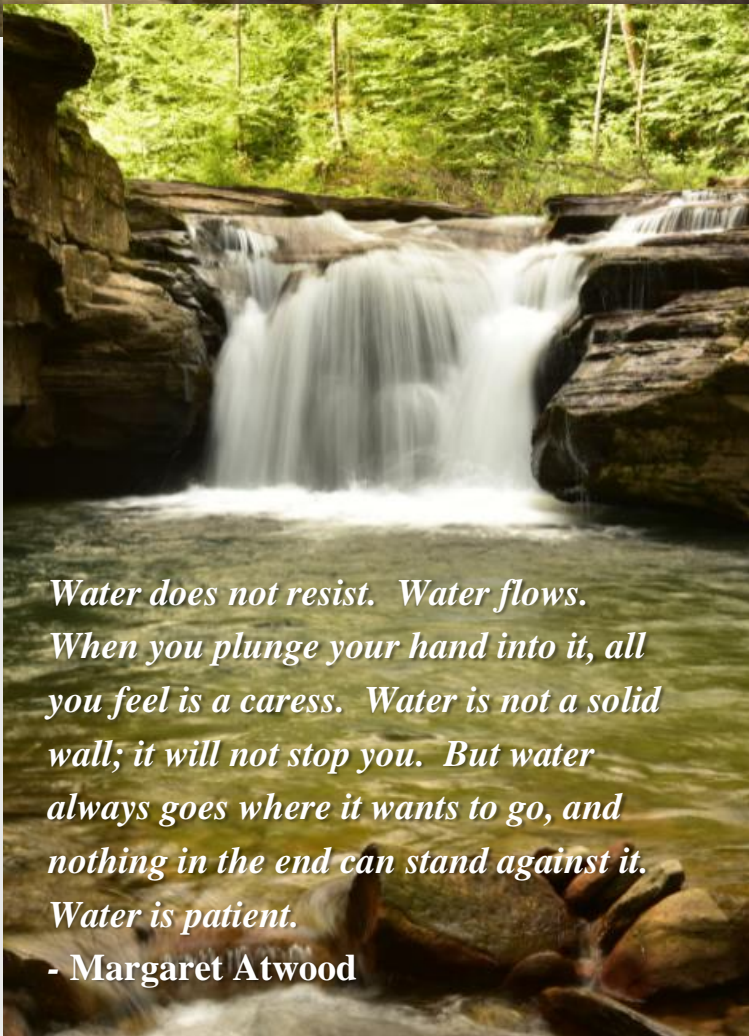


Alpine Falls (above and on the cover) lies along Big Run high up the mountain to the north of the park. While it is not far from the park, it is best reached from above – using the Loyalsock Road to get to the top of the mountain. From the road, hike to the falls using either the Loyalsock Trail or the Big Run Trail to the falls – which are located where these two trails meet – see purple dot on the map below.



Big Run and its tributaries just above Alpine Falls feature several scenic cascades and slides.

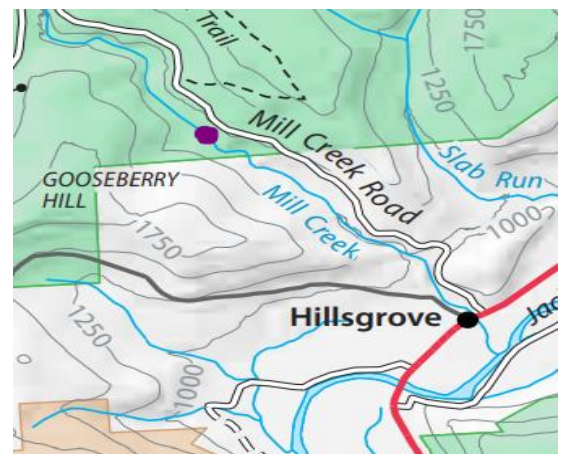
Mill Creek Falls



*Water does not resist. Water flows.
When you plunge your hand into it, all
you feel is a caress. Water is not a solid
wall; it will not stop you. But water
always goes where it wants to go, and
nothing in the end can stand against it.
Water is patient.*

- Margaret Atwood

Mill Creek and its branches have several waterfalls – the first of these as you go upstream is located just across the boundary of the Loyalsock State Forest. Going up Mill Creek Road, shortly after you enter the state forest, look for a wide shoulder on the left big enough for 2-3 cars, and a poster of forest rules. A short downhill hike will take you to the falls – see the purple dot on the map:





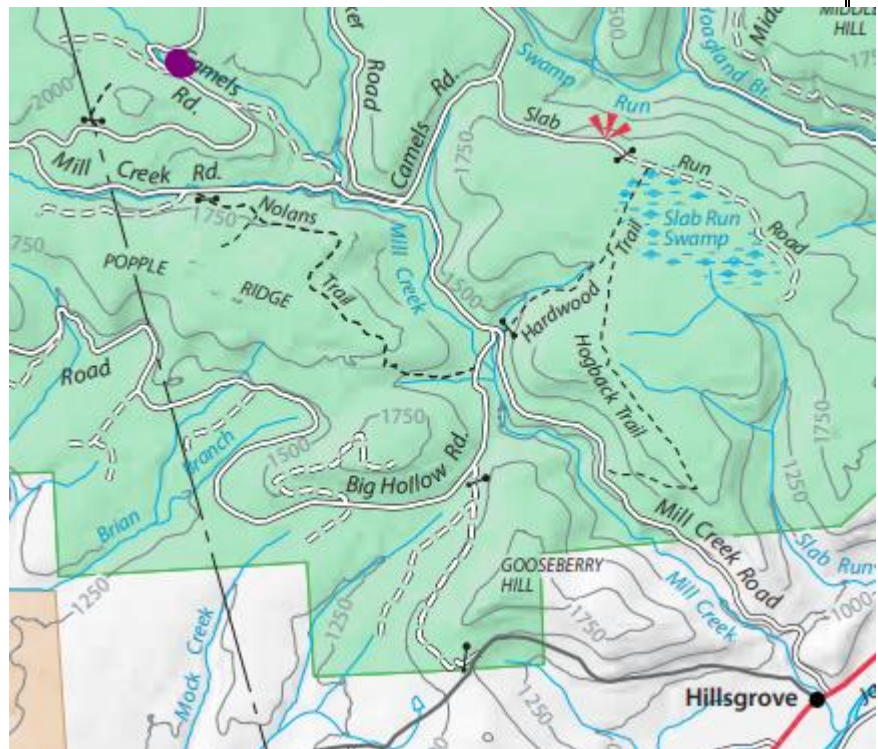
Middle Branch Falls

Upstream from Mill Creek Falls (see previous page), the creek splits into several branches. On the middle branch there are waterfalls located where Camels Road crosses the stream in a sharp U-turn. There is room to park on this U-turn – then follow the stream a short distance downhill to the first falls (see below). Then just below this first falls, is the second falls (see above). See the purple dot on the map below.



*If there is magic on this planet,
it is contained in water.*

- Loren Eiseley





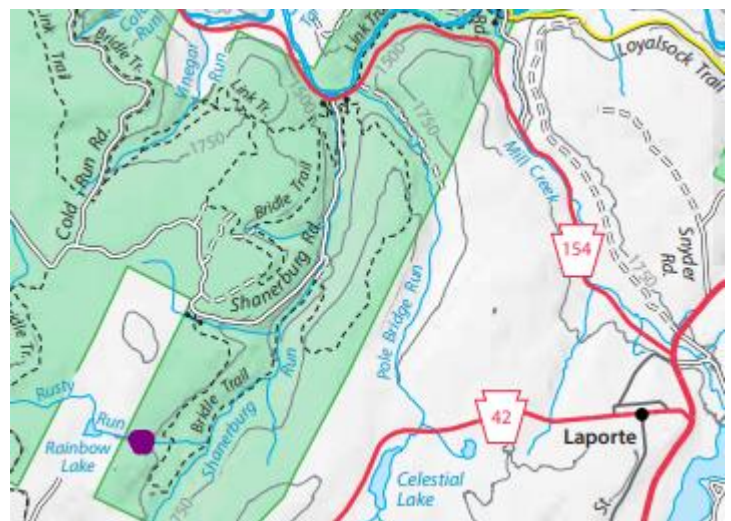
The Falls of Rusty Run

Rusty Run features a couple of small but picturesque waterfalls. From route 154, go up the mountain on Shanerburg Road for approximately 2 miles to the gated Bridle Trail/Road on the left and park as to not block the gate. Hike the relatively flat Bridle Trail for about a mile until you reach Rusty Run. Do not cross the stream – instead hike upstream to the right of the stream and through the forest and you will soon come to the first waterfall (picture on the left). Resume your upstream hike and you will soon reach the second falls (see picture above). See the purple dot on the map below for the location of these falls.



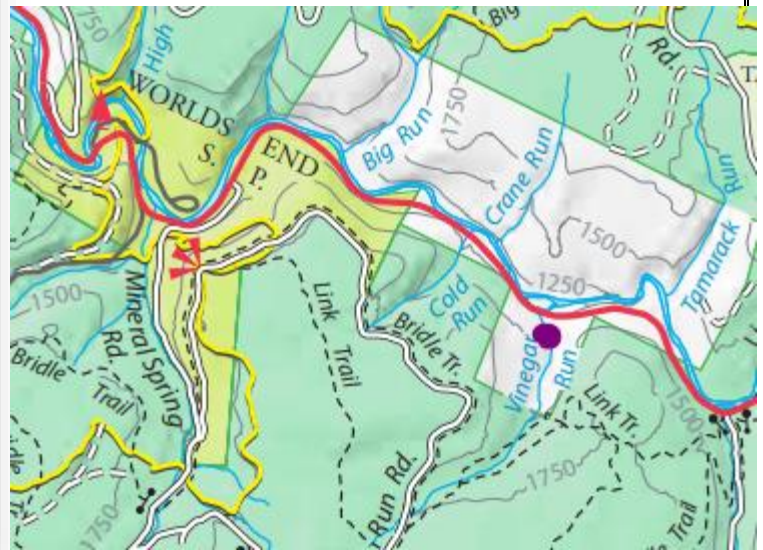
There's no better place to find yourself than sitting by a waterfall and listening to its music.

- Roland R. Kemler





Vinegar Run Falls is literally a “drive-by” falls – it is visible from Route 154. While the falls is on private land, you can see it from the road as you drive by. As you exit Worlds End State Park heading east, you will first pass Cold Run as it passes underneath the highway – and then shortly afterwards Vinegar Run and its falls will be on the right – see the purple dot on the map below.



Exploring Waterfalls...

- The terrain around waterfalls is often steep and wet. Sturdy, water-resistant footwear is essential – and hiking poles can help on the steep hillsides.
- To protect vegetation and for personal safety, please try to remain on established trails.
- Know where you are and where you are going. Use maps and/or personal GPS.
- If you are hiking alone, let someone know where you are and when you expect to return.
- Make sure you time your outings so that you are out of the forest before sunset.
- Overnight camping is generally prohibited near waterfalls in the Loyalsock State Forest and Worlds End State Park.
- For tips on photographing waterfalls – and a list of waterfall guidebooks – see the Spring 2021 edition of THE VISTA available on our Facebook page.



To support the **Friends of Worlds End State Park**, check out the SUPPORT section of the Pennsylvania Parks and Forests Foundation website and designate your gift to the -
FRIENDS OF WORLDS END STATE PARK!

<https://parksandforests.org/friends-groups/donate-to-a-chapter/>

The Friends of Worlds End State Park is a Chapter of the Pennsylvania Parks & Forests Foundation, which is a 501(c)(3) non-profit organization—contributions to which are tax deductible to the fullest extent of the law. No goods or services were received in exchange for this contribution. The official registration of the Pennsylvania Parks & Forests Foundation may be obtained from the Pennsylvania Department of State by calling toll free within Pennsylvania 1-800-732-0999. Registration does not imply endorsement.

PHOTO CREDITS: Cover: Alpine Falls by Dan Mumford. Page 3: Jane Swift, Dave Koweleski. Page 5: Michael Scott. Page 8: Dan Mumford. Page 10: Dan Mumford. Page 11: Jane Swift. Page 13: Dave Koweleski. Pages 15-23: Dan Mumford. Page 24: Splash Dam Pond by Dan Mumford.