

SPECIAL EDITION

April 2019

Vol. 1 Issue 3



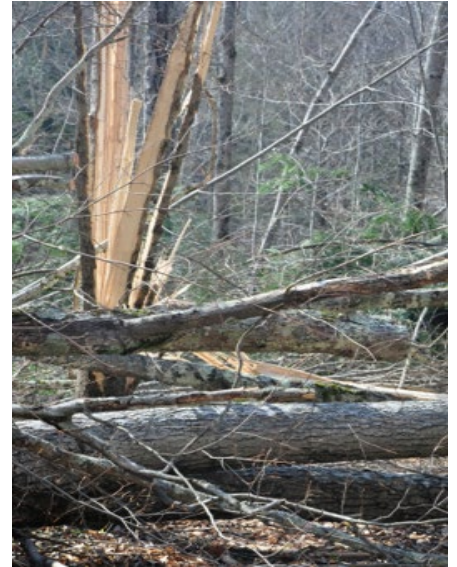
The Vista

The Newsletter of the Friends of Worlds End State Park

To conserve, support and protect the park's resources by promoting education, recreation, and stewardship.



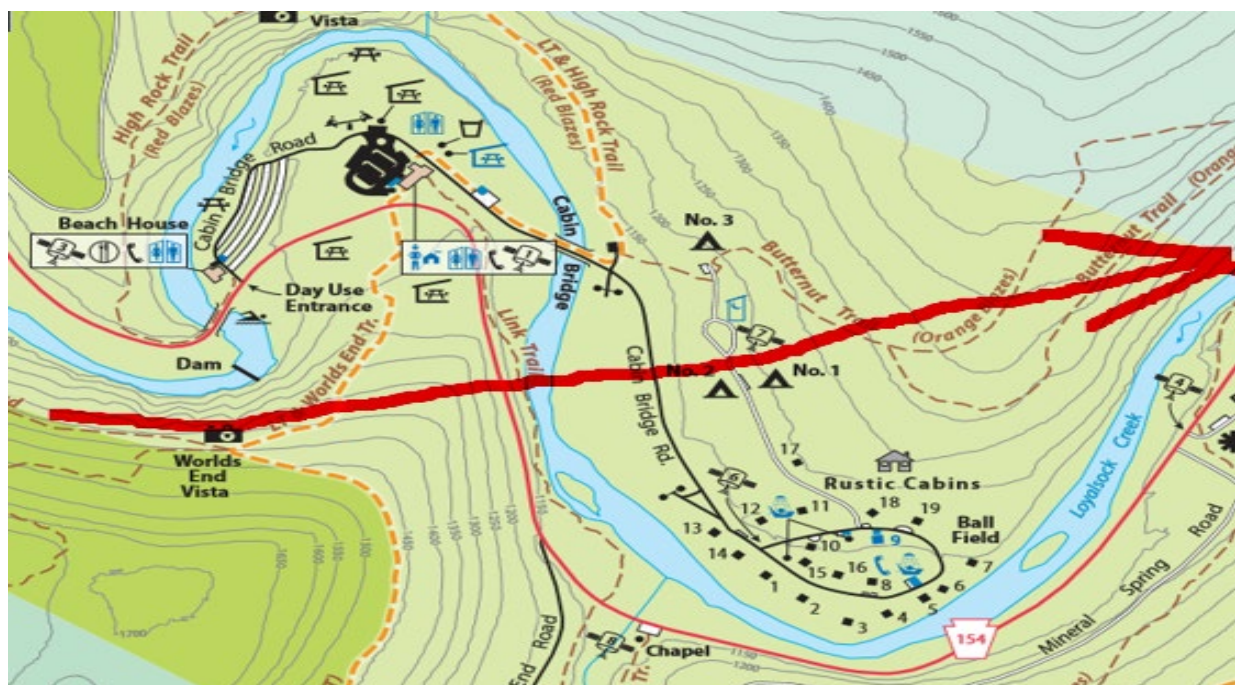
TORNADO STRIKES WORLDS END



Above and on the Cover: Fallen trees surround a park maintenance building along Cabin Bridge Rd.

In the early morning hours of Monday, April 15, a tornado roared through Sullivan County, on a path that started in Worlds End State Park and ended in Dushore. Fortunately, no injuries were reported. In the park, the tornado spared the cabin area (with many of the cabins being occupied at the time), the day-use area, and the family campground. But hundreds of trees were felled in the maintenance area, along the creek, and the surrounding mountainsides. Several trails are blocked by fallen trees, especially the Butternut Trail. Park staff, assisted by Department of Forestry personnel and crews from nearby Ricketts Glen State Park are hard at work clearing the damage.

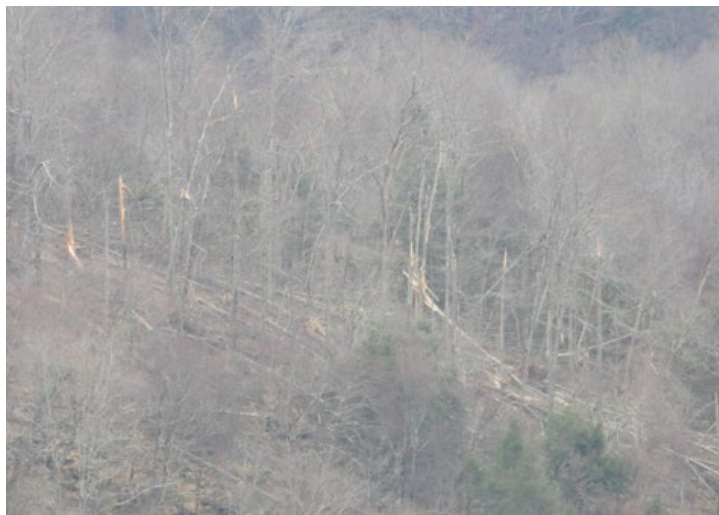
The map below shows the path of the tornado as it crossed the park:



From Loyalsock Canyon Vista, you can see the path of the tornado – from the upper left corner of the picture below – see *arrows*:



From Loyalsock Canyon Vista – zooming in on the tree damage on the mountainside – see *below*:



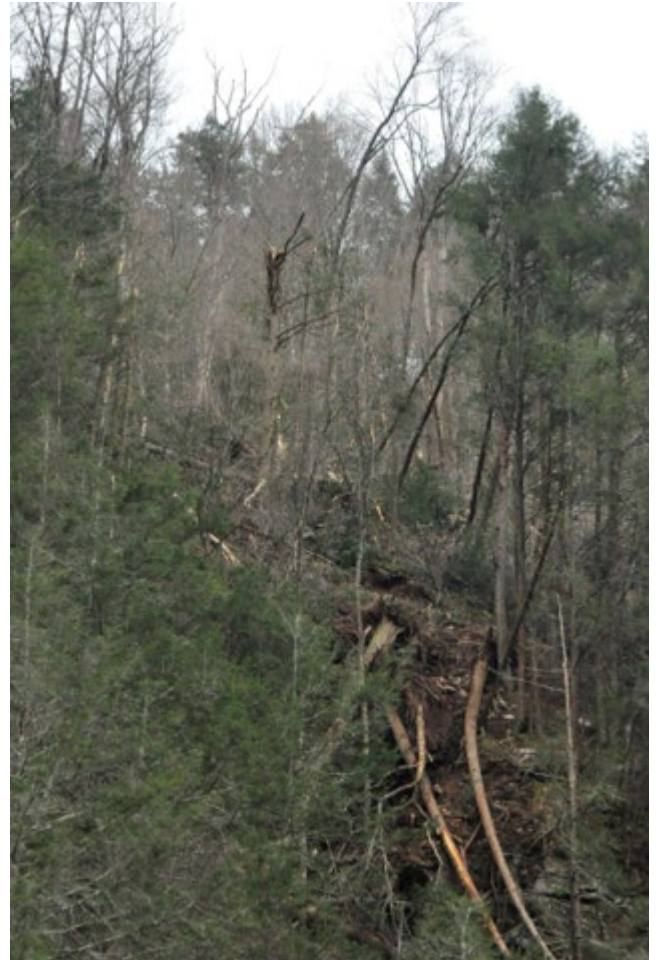
From Loyalsock Canyon Vista – zooming in on the hemlock trees blown down into the creek – see *right*:



Hemlocks blown down along Loyalsock Creek:



Tree damage on the mountainside above the swimming area – near the Worlds End Vista along Pioneer Road and the Worlds End Trail and the Loyalsock Trail:



Cleanup around a maintenance building along Cabin Bridge Road:





82 Cabin Bridge Road
PO Box 62
Forksville, Pa 18616
570-924-3287
friendsofworldsendsp@gmail.com

Board of Directors:

Dave Engle - Chairman
Michael Scott - Vice-Chairman
Micheline Scott - Treasurer
Dan Mumford - Secretary / Editor
Kyle Fawcett - Social Media Outreach
Lisa Engle
Dave Kowalewski
Lisa Wilcox

Follow and Like us on
Social Media:



facebook.com/
friendsofworldsendsp



instagram.com/
friendsofworldsendsp

The Friends of Worlds End State Park is a Chapter of the Pennsylvania Parks & Forests Foundation, which is a 501(c)(3) non-profit organization—contributions to which are tax deductible to the fullest extent of the law. No goods or services were received in exchange for this contribution. The official registration of the Pennsylvania Parks & Forests Foundation may be obtained from the Pennsylvania Department of State by calling toll free within Pennsylvania 1-800-732-0999. Registration does not imply endorsement.

The National Weather Service statement about the tornado:

PUBLIC INFORMATION STATEMENT
NATIONAL WEATHER SERVICE STATE COLLEGE PA
707 PM EDT TUE APR 16 2019

...EF-1 TORNADO CONFIRMED IN SULLIVAN COUNTY...

LOCATION...DUSHORE IN SULLIVAN COUNTY PENNSYLVANIA
DATE...APRIL 15, 2019

ESTIMATED TIME...1:05 - 1:13 AM EDT

MAXIMUM EF-SCALE RATING...EF-1

ESTIMATED MAXIMUM WIND SPEED...110 MPH

MAXIMUM PATH WIDTH...350 YARDS

PATH LENGTH...10 MILES

* FATALITIES...0

* INJURIES...0

* THE INFORMATION IN THIS STATEMENT IS PRELIMINARY AND SUBJECT TO CHANGE PENDING FINAL REVIEW OF THE EVENT(S) AND PUBLICATION IN NWS STORM DATA.

...SUMMARY...

THE NATIONAL WEATHER SERVICE IN STATE COLLEGE PA HAS CONFIRMED A TORNADO NEAR DUSHORE IN SULLIVAN COUNTY PENNSYLVANIA ON APRIL 15, 2019.

A TORNADO TOUCHED DOWN NEAR WORLD'S END STATE PARK ON STATE ROUTE 154 AND CONTINUED NORTHEAST INTO THE BOROUGH OF DUSHORE. ALONG ITS PATH, THE TORNADO PRODUCED POCKETS OF DAMAGE CHARACTERISTIC OF WIND SPEEDS GREATER THAN 100 MILES PER HOUR. NUMEROUS TREES WERE SNAPPED OR UPROOTED NEAR WORLD'S END STATE PARK AND IN CHERRY MILLS. A BARN WAS COMPLETELY DESTROYED AT RICKETY BRIDGE FARM ON HAPPYS ROAD. THE TORNADO DID CONSIDERABLE DAMAGE TO THE BOROUGH OF DUSHORE WHERE 7-8 HOMES SUFFERED MODERATE DAMAGE AND NUMEROUS TREES WERE SNAPPED OR UPROOTED. A MAJORITY OF THE COPPER WAS REMOVED FROM THE TOP A CHURCH STEEPLE AS WELL. THE TORNADO LIFTED EAST OF US 220 AFTER IT PASSED THROUGH DUSHORE.

<https://nwschat.weather.gov/p.php?pid=201904162307-KCTP-NOUS41-PNSCTP>

The park has posted the following alert on their website:

Worlds End State Park took a lot of wind damage from a storm early morning of Monday April 15, 2019. Staff is still assessing damage and prioritizing course of action to fix. Staff is not sure how long it will be until we get out on trails to see trail conditions. Hikers should use extreme caution in wind damaged areas along our trails for all hazards.

<https://www.dcnr.pa.gov/StateParks/FindAPark/WorldsEndStatePark/Pages/default.aspx>

To support the Friends of Worlds End State Park, check out the SUPPORT section of the Pennsylvania Parks and Forests Foundation website and designate your gift to the FRIENDS OF WORLDS END STATE PARK!

<https://paparksandforests.org/support/ways-to-give/>