

# *The Vista*

- **Autumn Events**
- **Looking Back at Summer 2023**
- **The Upcoming Annual Public Meeting**
- **Autumn Destination: Rose Valley Lake**

To conserve, support and protect the park's resources  
by promoting education, recreation, and stewardship.



82 Cabin Bridge Road  
PO Box 62  
Forksville, PA 18616

570-924-3287  
friendsofworldsendsp@gmail.com  
[www.friendsofworldsendsp.org](http://www.friendsofworldsendsp.org)

*"Autumn is a second spring when every leaf is a flower."*

*Albert Camus.*

**B**efore we dive into the splendors of autumn, we first look back at summer 2023 at Worlds End's – see starting on page 5. And check out what is happening at the park and in the area this Autumn – starting on page 3.

Autumn is a great season to go hiking – and to help plan your outings – we have our maps and guides, including **Falls & Views Loop: Exploring the Wildness of Worlds End State Park and Loyalsock State Forest** and **Trails in and Around Worlds End State Park** ...see page 10.

Finally, we celebrate the season by featuring another beautiful local autumn location on public land, **Rose Valley Lake** – see starting on page 11.

## **ANNUAL MEETING NOTICE:**

The Friends of Worlds End State Park's annual meeting will be **Tuesday, November 14, 2023 at 3:30 pm** at the Worlds End State Park Office and Visitors Center. We will be reviewing the group's activities over the past year and making plans for 2024. All members and the public are invited to attend. (Please monitor our social media as the meeting date approaches in case there is a change in location or time).

### **BOARD OF DIRECTORS:**

Dave Engle – Chairman  
Michael Scott - Vice-Chairman  
Michelene Scott – Treasurer  
Kyle Fawcett - Social Media Outreach  
Dan Mumford - Secretary – Editor  
Lisa Engle  
Dave Kowalewski  
Lisa Wilcox  
Tom Yarnall  
Ruth Rode – Honorary Director

Follow and Like us on Social Media:



[facebook.com/  
friendsofworldsendsp](https://facebook.com/friendsofworldsendsp)



[instagram.com/  
friendsofworldsendsp](https://instagram.com/friendsofworldsendsp)

[www.friendsofworldsendsp.org](http://www.friendsofworldsendsp.org)





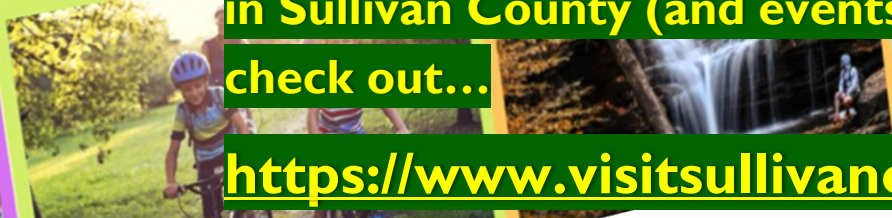
Home About Things To Do Events Wine & Food Places to Stay

VISIT SULLIVAN COUNTY

# GEM OF THE ENDLESS MO

For information on upcoming autumn events in Sullivan County (and events year-round)... check out...

<https://www.visitsullivancounty.com/>



## Upcoming Autumn Events Include:

**PA Bowhunters Festival** – Sullivan County Fairgrounds – Forksville - September 15 – 17 <http://www.pabowhunters.com/>

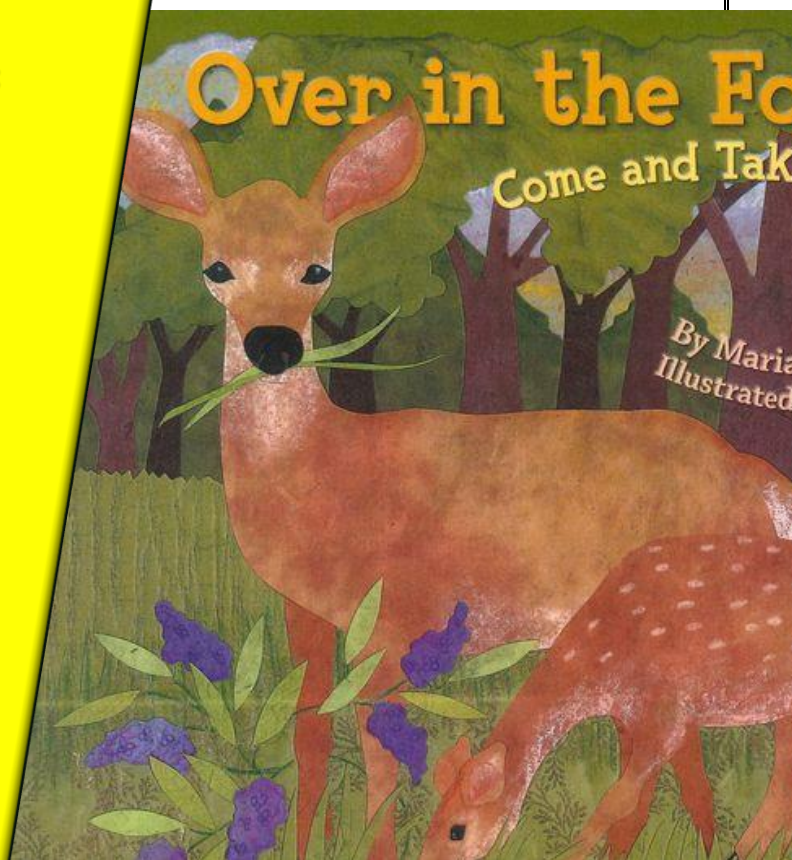
**42nd Annual Lumberjack / Chainsaw Carving Competition** – Sullivan County Fairgrounds – Forksville – October 14 – 15.

## StoryWalk in the Park this Autumn:

NEW at the Park this autumn is a StoryWalk!

Take a stroll on our woodland path and read a story as you go. This exciting installation was created for the park by the Sullivan County Library with United Way funding. Children and those who are young at heart will delight in learning about the forest creatures which make their homes nearby.

The StoryWalk begins in the Cliff Pavilion picnic area and follows the path along the creek toward the LT Pavilion. It will remain in place through the end of October.



## Sunday Hunting in 2023:

When planning your outdoor activities this autumn, keep in mind that hunting is allowed on Sundays on the following dates:

November 12, 19, and 26.

Always a good idea to wear fluorescent orange when out hiking on these days or any other day that hunting is permitted.



## BECOME A DCNR CONSERVATION VOLUNTEER:

If you are interested in volunteering at the park, we encourage you to register. Registering brings you insurance coverage and the ability to track your volunteer hours. See more on DCNR's website:

<https://www.dcnr.pa.gov/Conservation/GetInvolved/Pages/default.aspx>

<https://www.volunteers.dcnr.state.pa.us/VolunteerApplication.aspx>



## FIREWOOD AVAILABLE THIS FALL AND WINTER:

Firewood is available for sale in the cabin area this winter - \$8.00 per bundle. In the campground, look for the self-serve kiosks near the Loop A and Loop B shower-houses - and in the cabin area near the trash dumpsters on the right as you enter the cabin community on Cabin Bridge Road. Money from these sales funds the park improvement projects of the Friends of Worlds End State Park.



THE  
**WORLDS END  
FALL CLASSIC**  
half marathon

## WORLDS END FALL CLASSIC HALF MARATHON

Saturday, September 23, 2023:

The Worlds End Fall Classic is a challenging half marathon that explores Worlds End State Park and Loyalsock State Forest.

For more information check out the race's website:

<https://worldsendfallclassic.com/>

...and how to volunteer:

<https://runsignup.com/Race/Volunteer/PA/Forksville/WorldsEndFallClassic>



# Summer 2023 at Worlds End!



Forest Therapy walk in July.



"Flower Power!" class involved transferring flower pigment to fabrics.



The Explore Archery Program was once again popular with park visitors of all ages!

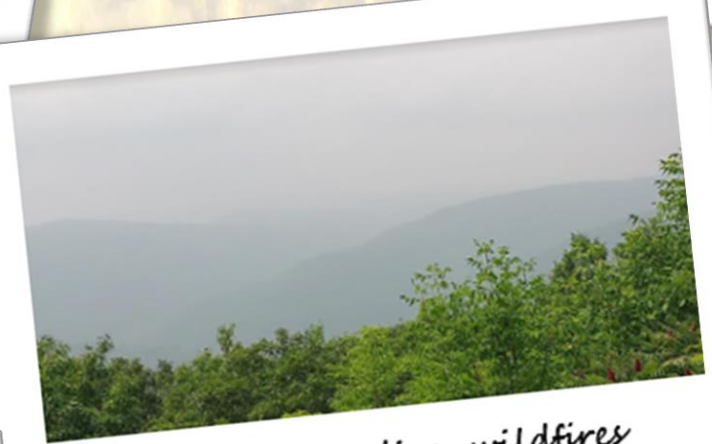




*Papermaking 101 class in July.*



*International Mud Day in June*



*Smoke from Canadian wildfires occasionally engulfed the endless mountains – as seen here at the High Knob Overlook.*



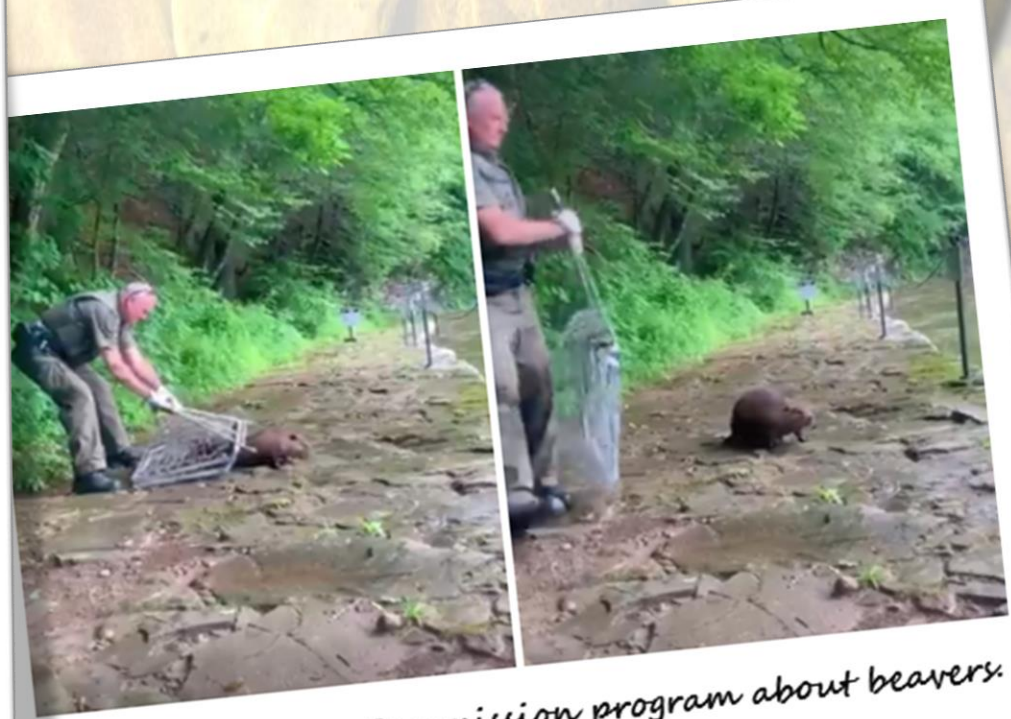




Solar and night sky viewing program at the High Knob Overlook in June with the ChesMont Astronomical Society.



The Loyalsock surges under Cabin Bridge Road in the park on August 18 after heavy rains the night before.



A June PA Game Commission program about beavers.





Heavy thunderstorms in July led to flash flooding – leaving this pile of debris along Double Run.

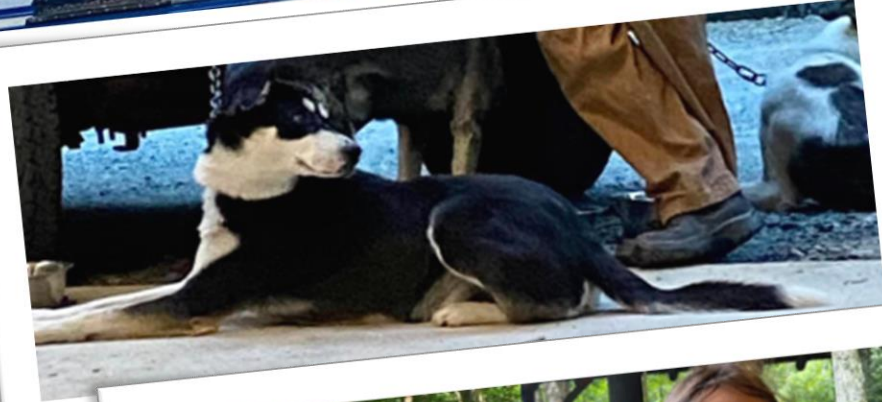


The PA Game Commission did several bear presentations over the summer at the park – with over 250 attendees. After being tagged and processed, these bears were relocated to a new, safer location.



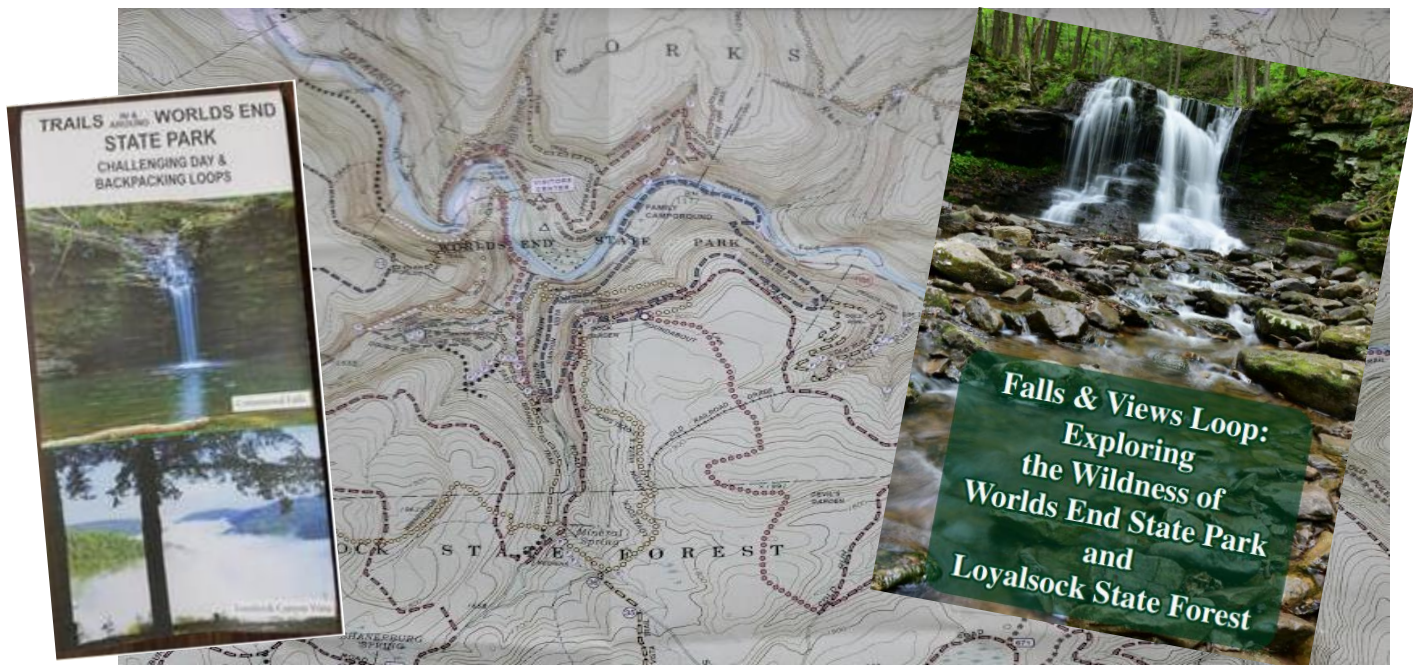


Mary Beth Logue, accompanied by her six Alaskan Huskies, gave a presentation of the sport of sled dog racing in August.



The "Weed Weaving" class in August did beautiful work!





Autumn is a great season for hiking – with cooler temperatures, lower humidity and fewer bugs! And with the foliage changing in October, the mountains are transformed into a sea of yellows, reds and oranges! To help you plan your fall hiking outings, the Friends of Worlds End State Park make available our newest and most comprehensive hiking guide that features Worlds End and the surrounding Loyalsock State Forest **Falls & Views Loop: Exploring the Wildness of Worlds End State Park and Loyalsock State Forest**. This is a 70-page guide with 3 maps detailing over 77 miles of trails. The **Falls & Views Loop** passes more than 90 seasonal falls and 40 views. The first 18 pages provide general reference information concerning the park and forest – followed by over 50 pages of detailed turn-by-turn directions highlighting waterfalls, views, geological features, trail registers, water sources, and alternate routes. Shorter loop options are also provided for those unable to complete the entire trail in one outing – including day-hike and 2-day hiking options – or even an afternoon! Local history is also highlighted – learn about the history of coal mining, railroading and the Civilian Conservation Corps here in Sullivan County among many other things.



Also available is the smaller **Trails in and Around Worlds End State Park** that features shorter hikes centered on the park and the forest immediately surrounding the park.

These guides and maps are available at:

- *The Worlds End Park Office*
- *The Sullivan Review (<https://thesullivanreview.com/maps/>)*
- *McCarty Mercantile in Hillsgrove.*
- *Keystone Trails Association (<https://www.kta-hike.org/>)*
- *Otto's Bookstore in Williamsport.*







## Autumn Destination: Rose Valley Lake

Every autumn *The Vista* features a beautiful, nearby autumn location that is on public land and easily accessible. This year we take you a little over the county line into Lycoming County to Rose Valley Lake, a 389-acre PA Fish and Boat Commission site north of Williamsport. The lake is a popular fishing and boating spot, stocked with muskellunge and walleye. It is also a great location for bird-spotting including Ring-necked Ducks, Bufflehead and Ruddy Ducks, American Wigeons, Northern Pintails, Pied-billed Grebes, Common Mergansers, Common Loons and Herons. The lake in many locations is bordered by woodlands, that in the first half of October turns brilliant shades of red, yellow and orange. If you want to photograph the foliage display, first thing in the morning is the best time as the rising sun lights up the western shores – and the early morning is also your best chance of seeing the lake calm – producing vivid reflections of the foliage.





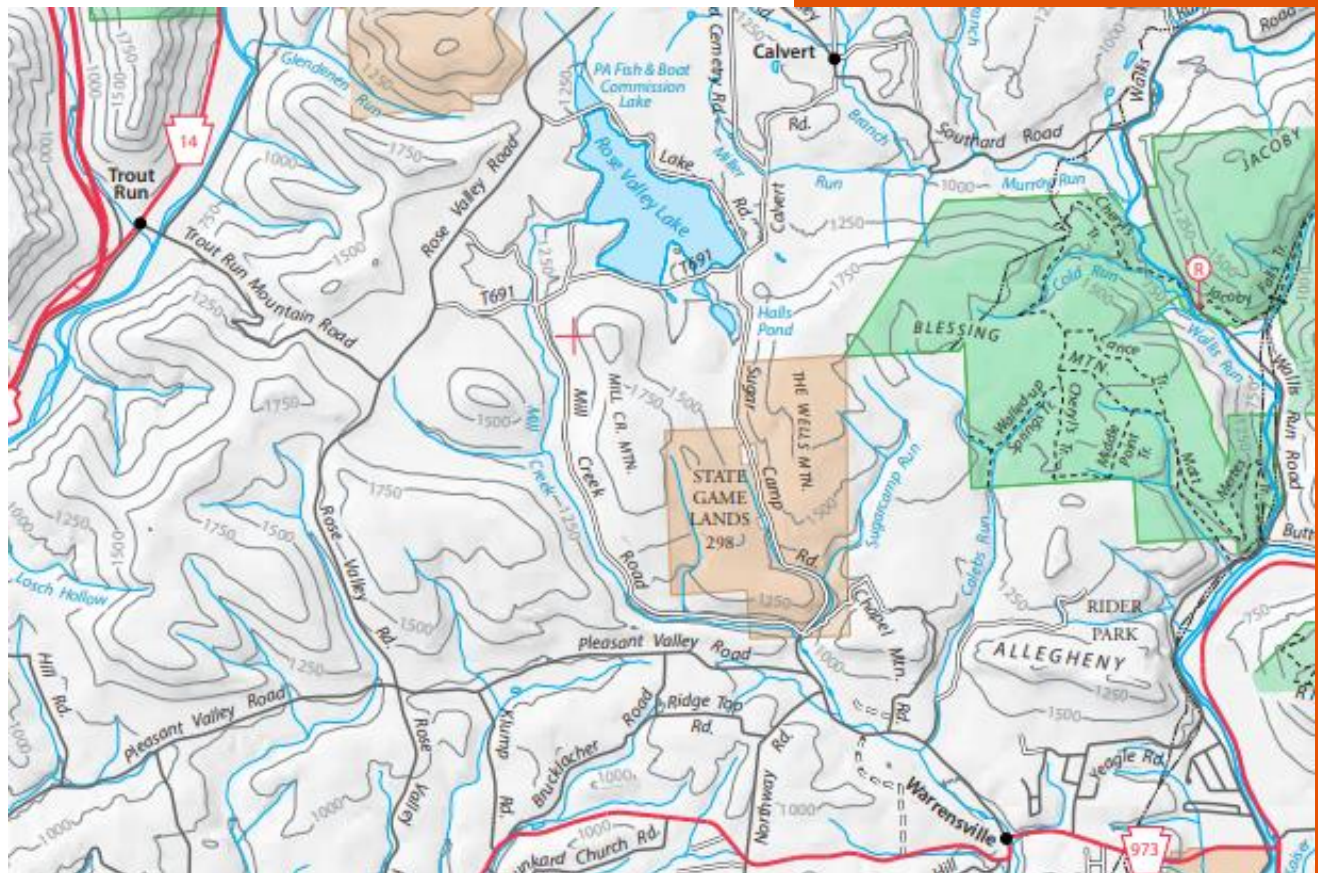
Early autumn mornings can find the Rose Valley surrounding the lake enshrouded in fog – which can produce additional photographic opportunities (see on the right).

For more information, see this website:

<https://www.visitpa.com/region/pennsylvania-wilds/rose-valley-lake>

**To reach Rose Valley Lake:** From Trout Run to the west, take Trout Run Mountain Road up the mountain – then turn left onto Rose Valley Road – look for signs directing you to Lake Road. From the south and east, take Rt 973 to Rose Valley Road - look for signs directing you to Lake Road.

The lake has roads along most of its shoreline, and there are numerous parking areas and boat launches.





# Join the Friends of Worlds End State Park for **FREE!**

As of 2023, membership is FREE! All we need is your email address so that we can email you the **THE VISTA** four times a year!

To get on our email list, see our website:

<https://www.friendsofworldsendsp.org/mailling-list>

Of course we always welcome contributions! To contribute, see our website:

<https://www.friendsofworldsendsp.org/donate>

If you prefer to donate by mail, please make checks payable to the PPF and include Friends of Worlds End on the memo line. Checks should be mailed to:

Michelene Scott, Treasurer  
Friends of Worlds End State Park  
PO Box 62  
Forksville, PA 18616



*The Friends of Worlds End State Park is a Chapter of the Pennsylvania Parks & Forests Foundation, which is a 501(c)(3) non-profit organization—contributions to which are tax deductible to the fullest extent of the law. No goods or services were received in exchange for this contribution. The official registration of the Pennsylvania Parks & Forests Foundation may be obtained from the Pennsylvania Department of State by calling toll free within Pennsylvania 1-800-732-0999. Registration does not imply endorsement.*

PHOTO CREDITS: Cover – Rose Valley Lake by Dan Mumford; Page 4: Dan Mumford; Page 5: Jane Swift. Page 6: Jane Swift, Dan Mumford. Page 7: Jane Swift. Page 8: Michael Scott. Page 9: Jane Swift. Page 11 – 13: Dan Mumford.