

The Newsletter of the Friends of Worlds End State Park.



Summer 2020 Vol. 2 Issue 3

The Vista

Inside This Issue:

- Update on park status and summer events
- Staying safe while outdoors
- Maps – and more maps!
- New park trails
- Worlds End Word Find

To conserve, support and protect the park's resources by promoting education, recreation, and stewardship.



82 Cabin Bridge Road
PO Box 62
Forksville, PA 18616
570-924-3287
friendsofworldsendsp@gmail.com

Follow and Like us on
Social Media:



facebook.com/
friendsofworldsendsp



instagram.com/
friendsofworldsendsp

Board of Directors:

Dave Engle
Chairman

Michael Scott
Vice-Chairman

Micheline Scott
Treasurer

Kyle Fawcett
Social Media Outreach

Dan Mumford
Secretary - Editor

Lisa Engle

Dave Kowalewski

Lisa Wilcox

Tom Yarnall



Summer Update:

In this issue of *The Vista*, we want to share with you what we know about activities at Worlds End this summer. Given the pandemic, the situation is very fluid, and everything is subject to change. We suggest using the weblinks and resources we note below to keep up-to-date on the latest news.

DCNR WEBLINKS:

<https://www.dcnr.pa.gov/Pages/default.aspx>

<https://www.dcnr.pa.gov/Pages/AlertDetails.aspx>

RESERVATION INFORMATION:

<https://pennsylvaniastateparks.reserveamerica.com/welcome.do>

DCNR- WORLDS END STATE PARK:

<https://www.dcnr.pa.gov/StateParks/FindAPark/WorldsEndStatePark/Pages/default.aspx>

DCNR PRESS RELEASES:

<https://www.media.pa.gov/Pages/DCNR.aspx>

WORLDS END DAY CANCELLED: Out of an abundance of caution, the Board has decided to cancel World Ends Day 2020 that had been scheduled for July 25. We will resume the annual Worlds End Day celebration in the summer of 2021.

MUD DAY CANCELLED: was planned for June 20 – look for this to return in the summer of 2021.

ARCHERY PROGRAM: June classes of the summer archery program have been cancelled. Please check our Facebook page for information about possible classes in July and August.

ULTRAMARATHON POSTPONED: The organizers of the Worlds End Ultramarathon have postponed the race – it will now take place on Saturday, September 26, 2020. For more information, check out the race website at: <https://worldsendultra.com/news/>

TIPS FOR HEALTHY LOCAL OUTDOOR RECREATION:

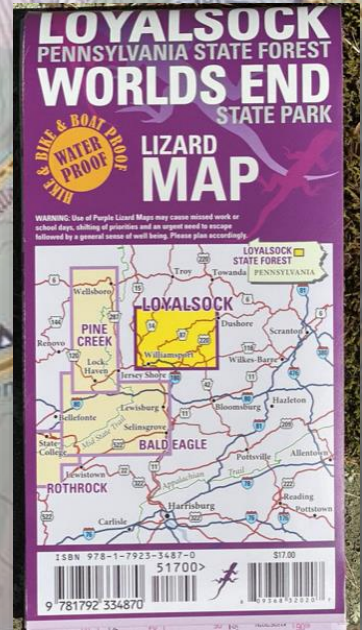
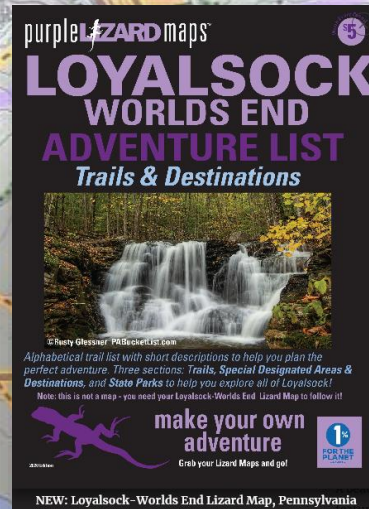
- Only recreate outdoors with people who live in your household – not in groups.
- Spread out – if the parking lot or the trailhead is crowded, find another location or go at a less busy time of day. Maintain at least six feet from other individuals. Don't hike or recreate in groups – and adhere to social distancing (stay 6 feet apart).
- Do not use playgrounds. They are risky because of their high-touch nature, and they are not cleaned regularly.
- Follow rules for your safety and don't take unnecessary risks. Avoid activities that put you at greater risk of injury, as there is limited staff to assist.
- Use the bathroom before you visit – public bathrooms may not be open.
- Bring a bag and carry out your trash.
- Clean up after pets.
- Respect the rules, be careful, and value our protected places.
- Take hand sanitizer with you and use it regularly.
- Avoid touching your face, eyes, and nose.
- Cover your nose and mouth when coughing and sneezing with a tissue or flexed elbow.
- If you are sick, stay home.

SOURCE: <http://www.docs.dcnr.pa.gov/cs/groups/public/documents/document/GuidanceOnSpendingTimeOutdoors.pdf>

...and don't forget the usual precautions while hiking:

- Make sure someone knows where and when you are hiking.
- Wear sturdy footwear. Hiking poles can also be useful on steeper and rockier trails.
- Be sunsafe – wear hats and sunscreen.
- Avoid ticks – wear long pants and use bug spray.
- Stay hydrated – take beverages along and drink frequently.
- Know your trail – take a map – see the article on the next page...

MAPS...AND MORE MAPS!



For those of us, who in this age of electronic maps and GPS, would still never venture out into the woods without a paper map – there is good news this summer! A series of new maps of the area from many different sources will soon be available – starting with a brand-new map of the Loyalsock State Forest from our friends at **Purple Lizard**. You may know Purple Lizard from their quality maps of other wilderness areas in Pennsylvania such as the Pine Creek Valley, the Bald Eagle State Forest, Moshannon State Forest and the Quehanna Wild Area among other popular destinations. In the past year, the folks at Purple Lizard turned their attention to the Loyalsock State Forest – and their meticulous research is apparent in the beautifully detailed map they have produced. They have also produced a “Loyalsock – Worlds End Adventure List” describing the points of interest found in the area. For more information, check out their website at: <https://www.purplelizard.com/products/loyalsock-worlds-end-pa>. These new Purple Lizard products are available on their website; from the Pa Parks and Forests Foundation website (<https://ppff.z2systems.com/np/clients/ppff/giftstore.jsp>); and also from local merchants.

The classic **Loyalsock Trail Guide** published by the Alpine Club of Williamsport has been updated with a new 2020 Edition. The revised, 20th edition is essential - whether you are doing a day-hike of a particular section or an overnight backpacking trek of the entire length. The 51-page guide includes turn-by-turn directions highlighting the key sights, along with 3 water-resistant, color maps. The guide is available from many local merchants, including *The Sullivan Review* – and is available online from the *Keystone Trails Association* (KTA) – see their online bookstore at : <https://www.kta-hike.org/store.html>.



The *Friends of Worlds End State Park* continues to make available this summer the **Trails in and around Worlds End State Park** created by trailblazing legends Ruth Rode and Dave Kowalewski. This map includes both the park trails and the trails in the nearby forest. This makes planning and hiking longer day hikes and backpacking treks easier. The map displays destinations and highlights along the path such as waterfalls, scenic vistas, trail registers, along with other points of interest. The back of the map includes detailed turn-by-turn directions of the trails, and various loops you can hike by combining several of the trails. Printed in full-color on durable water-resistant paper, the map is for sale at the park office for \$10.00, and is also available from *The Sullivan Review*, *McCarty Mercantile* and online from the *Keystone Trails Association* (<https://www.kta-hike.org/>).



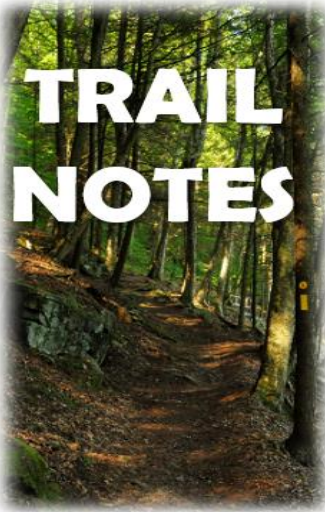
A Pennsylvania Recreational Guide for

Worlds End

Worlds End State Park



And finally...a new edition of the official Recreational Guide and Map of Worlds End will be available this summer for free at the park office. The updated park map will include newer hiking trails such as the Cold Run Trail, East Branch Trail, Flynn Trail, and the Red Pine Trail. See the following article for more about these new park trails.



NEW PARK TRAILS TO EXPLORE.

You may notice on the maps discussed in the previous article some new trail names. The Cold Run Trail, the Flynn Trail and the Red Pine Trail are not only new, but they also share in common some important park history. The land these trails cross was not always parkland – in fact they traverse land that was until relatively recently private property. This land was part of the Flynn estate – and at a June 19, 1993 realty auction, the *Northcentral Pennsylvania Conservancy* (NPC) successfully bid on 606 acres adjoining the northern and eastern boundaries of the park. The NPC subsequently turned the land over to the Department of

Conservation and Natural Resources (DCNR). This acquisition assured protection of the park, a section of the Loyalsock Trail that crosses part of this land, and the view from Loyalsock Canyon Vista – ensuring that the ocean of green one sees from the vista would remain pristine. While hiking these new trails, keep in mind that it is the farsighted generosity of the NPC that made the preservation of this land and these new trails possible. The NPC celebrates its 30th anniversary in 2020 – and for more about them, what they do, and the anniversary celebration, check out their website: <https://npcweb.org/>
<https://npcweb.org/npc-30th-anniversary-celebration-annual-meeting/>

FLYNN TRAIL: Named in honor of the family who once owned this land, this 0.8-mile trail connects the cabin area via the Butternut Trail with the Loyalsock Trail and the upper sections of High Rock Run where there are cascades and waterfalls. This trail is sometimes referred to as the Emergency Road – because its original purpose was to provide access to the cabin area in case Cabin Bridge Road becomes impassable (as happened during the 2011 flood).

RED PINE TRAIL: This 0.42-mile trail connects the cabin area via the Butternut Trail to the Loyalsock Road that runs atop the mountains to the north of the park. Along Loyalsock Road you can reach Sones Pond, the Tamarack Run Natural Area, and also access other trails including the Loyalsock Trail, Big Run Trail, and Fox Hollow Trail.

COLD RUN TRAIL: This is a 1.5-mile loop trail accessed via the Canyon Vista Trail and will take you to the cascades and waterfalls along Cold Run in the eastern part of the park. Its course also takes hikers through interesting rock formations and a vista. See our spring 2020 edition of *The Vista* for a detailed description and history of this trail.

By Dan Mumford, with an assist on the history from Ruth Rode.

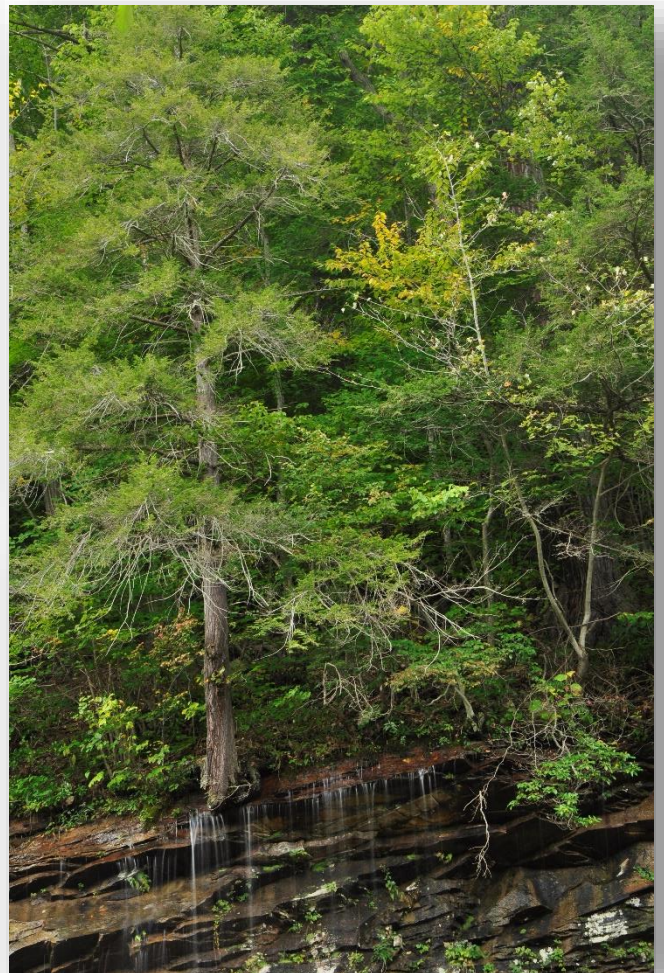
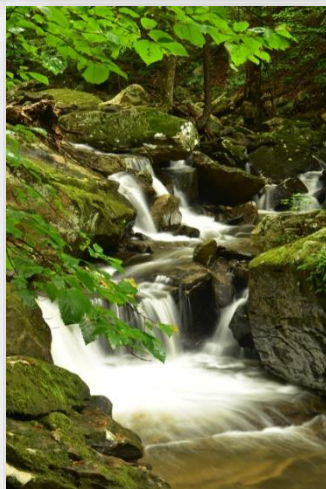


ENROLL TO BECOME A DCNR CONSERVATION VOLUNTEER

If you are interested in volunteering at the park, we encourage you to register. Registering brings you insurance coverage and the ability to track your volunteer hours. See more on DCNR's website: <https://www.dcnr.pa.gov/GetInvolved/Pages/default.aspx>

FIREWOOD AND ICE SALES

We will continue to sell firewood in the campground near the Loop A (lower loop) bathrooms and also in the cabin area near the trash/recycling area. Price is \$8.00 per bundle. Also this summer – bags of ice will be for sale in the campground –located near the Loop A bathroom. Price is \$6.00 for a large bag and \$3.00 for a small bag. Money raised from these sales goes to fund the park-improvement projects planned by the Friends of Worlds End State Park.





Friends of Worlds End Word Search

B X K P E C O L D R U N R O A D Q W Z P I O N E E R R O A D
 D M C U S J Q R M L H H C A N Y O N V I S T A U W D L V M Q
 S R A L D N X X U Q K D D O U B L E R U N T R A I L N E O N
 I T B I R D W A T C H I N G L B R E C R E A T I O N F O U X
 B R I D L E T R A I L F R O U T D O O R S U C I F Z W Z N W
 O O N V U H U N T I N G H C P W A R R E N S W I N D O W T H
 H U B C X W G N G K X T X B L O Y A L S O C K T R A I L A C
 P T R G S Q R M R C Q W J U D V L H I G H R O C K T R A I L
 K C I Q T X W E A W O R L D S E N D T R A I L C Z V B W N S
 O X D Y A J K W N K E Q D O U B L E R U N S C A Y E N O S W
 V D G G T Z O Q G L K V U H V C O O F C C U X M U A N R H I
 G Z E K E S W X E O N P T M Q A G K R I O L K P C S A L E M
 J W R E P M X U R S E C B L E M K I D O T L W F Y T T D L M
 F L O Y A L S O C K C R E E K P E O S V T I H I L B U S L I
 O L A C R R S O F R I E N D S G R O U P O V I R E R R E B N
 R S D B K H Y S O P F U W F U R L C H K N A R E N A E N E G
 K T W I L D L I F E E I O P J O I W T I W N L Z V N X D N A
 S A C G V P Z Y X A U X S H Q U N U H X O C S H I C O R D W
 V R A R N I B R H I K I N G N N K W J N O O E D R H S M E H
 I G M G I C E K U X G S E T V D T S F I D U N E O T D L R D
 L A P C O N S E R V A T I O N A R U F P F N D U N R E I Q A
 L Z I A D I L H C P H F H Z J B A X R C A T H Z M A N P G W
 E I N B G C M I N E R A L S P R I N G L L Y K P E I I D N A
 H N G I J T O M R R B L K G F G L A C K L J B A N L S R Q T
 N G D N N A Q F I S H I N G V R B O L D S C L L T F A K M E
 V Z P G H B B N B V B T I E E X V G F S K I I N G S O K J R
 S Y O M G L R O C K G A R D E N I Z X Y T P S V I C A V R F
 S L A G X E N P E N N S Y L V A N I A T J X D Q M R K D T A
 J Z D I A F L I B U T T E R N U T T R A I L V H U D H Y Q L
 O V V V G E A G L E S M E R E B A C K P A C K I N G S H C L

Locate the words listed below to complete the word search! Words run both horizontally and vertically.

Backpacking	Cold Run Road	Friends Group	Nature	State Park
Bird Watching	Conservation	Hellbender	Outdoors	Sullivan County
Bridle Trail	Cottonwood Falls	High Rock Trail	Pennsylvania	Swimming
Butternut Trail	Double Run	Hiking	Picnic Table	Trout
Cabin	Double Run Trail	Hunting	Pioneer Road	Warrens Window
Cabin Bridge Road	Eagles Mere	Link Trail	Ranger	Waterfall
Camp Fire	East Branch Trail	Loyalsock Creek	Recreation	Whirls End
Campground	Environment	Loyalsock Trail	Rock Garden	Wildlife
Camping	Fishing	Mineral Spring	Skiing	Worlds End
Canyon Vista	Forksville	Mountains	Star Gazing	Worlds End Trail

The Friends of Worlds End State Park were formed in 2018 to conserve to conserve, support, and protect the park's resources by promoting education, recreation, and stewardship, the Friends are seeking new members interested in supporting these goals and volunteering at the park. Visit us online at www.facebook.com/friendsofworldsendsp !

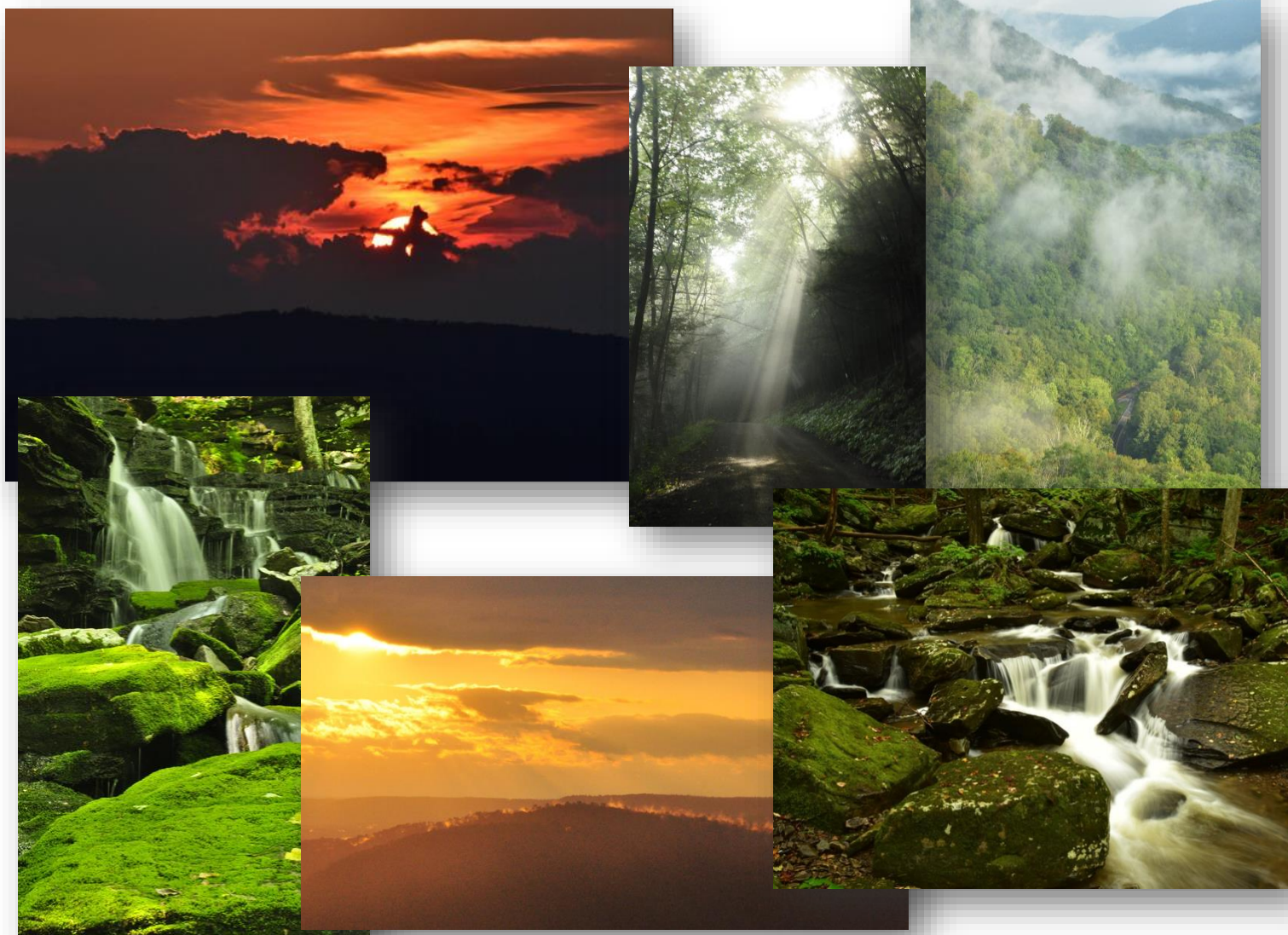


PHOTO CREDITS: Cover: Loyalsock Canyon Vista – Dan Mumford. Page 8 Word Search – Kyle Fawcett. Pages 2, 7 and 9 – Dan Mumford.

To support the Friends of Worlds End State Park, check out the **SUPPORT** section of the Pennsylvania Parks and Forests Foundation website and designate your gift to the **FRIENDS OF WORLDS END STATE PARK!**

<https://ppff.z2systems.com/np/clients/ppff/donation.jsp?test=true&campaign=75&>

<https://paparksandforests.org/support/ways-to-give/>

The Friends of Worlds End State Park is a Chapter of the Pennsylvania Parks & Forests Foundation, which is a 501(c)(3) non-profit organization—contributions to which are tax deductible to the fullest extent of the law. No goods or services were received in exchange for this contribution. The official registration of the Pennsylvania Parks & Forests Foundation may be obtained from the Pennsylvania Department of State by calling toll free within Pennsylvania 1-800-732-0999. Registration does not imply endorsement.