



The Vista

INSIDE THIS ISSUE:

Farewell to Jane Swift

The Beach Grove Picnic Area

Dark Sky Viewing

Mountain Biking at Drift Mine



To conserve, support and protect the park's resources by promoting education, recreation, and stewardship.

82 Cabin Bridge Road

P.O. Box 62

Forksville Pa 18616

570-924-3287

friendsofworldsendsp@gmail.com

BOARD OF DIRECTORS:

Dave Engle – Chairman

Michael Scott - Vice-Chairman

Michelene Scott – Treasurer

Kyle Fawcett - Social Media

Dan Mumford - Secretary – Editor

Lisa Engle

Dave Kowalewski

Amaya Urtasun

Lisa Wilcox

Tom Yarnall

Ruth Rode – Honorary Director

Follow us on Social Media:

 [facebook.com/
friendsofworldsendsp](https://facebook.com/friendsofworldsendsp)

 [instagram.com/
friendsofworldsendsp](https://instagram.com/friendsofworldsendsp)

...and on the web...

www.friendsofworldsendsp.org



"Summer afternoon—summer afternoon; to me those have always been the two most beautiful words in the English language."

— Henry James

No offense intended to Henry James, but if there is anything more beautiful than a summer afternoon, it is a summer afternoon at Worlds End! And what to do this summer at the park and the surrounding forest? See starting on page 13 for some new and old ideas—including the new cornhole court, a new dark sky area, and mountain biking paths!

However, we start the summer with some bittersweet news—the retirement of long-time Worlds End Environmental Educator Jane Swift. See starting on page 3 for our tribute and farewell to Jane. The Friends thank Jane for her generous and kind support over the years and wish her every happiness in retirement!

You will see some new features and activities at the park this year—thanks to the PA Outdoor Corps and the park's maintenance staff—see starting on page 8.

Hope to see you this summer at Worlds End!



*Farewell and Happy Retirement
to Jane Swift!*

On June 12, Environmental Educator Jane Swift ended her 28-year career at Worlds End – saying goodbye to long-time colleagues and friends (picture below)... and featuring a bagpipe send-off by Tom Taylor. After countless park visitor questions, campground programs, school field trips, guided hikes, and so on, Jane has been as much a part of Worlds End as the Loyalsock Canyon Vista, the beach, and the Cliff Pavilion!



Jane studied at Rutgers University and has a degree in agricultural sciences and environmental education. Upon moving to Sullivan County and starting a family, she chose home education for her children's elementary years. Because they lived close to the park, she took advantage of many of the Junior Naturalist programs offered by then park Environmental Interpretive Technician (EIT) Larry Worthington as enrichment opportunities to home-schooling during those years. She became well acquainted with Larry and he was instrumental in her decision to pursue employment at Worlds End. She was then hired in June 1998 as a part-time, seasonal EIT and shared the job with Larry through 2006. Upon his retirement, Jane was offered the promotion to 9-month Environmental Education Specialist (EES).

After 28 years, Jane has so many rich memories—most of them from the 19 years under the supervision of then-park Manager Bill Kocher who encouraged her creativity and innovation in developing programming like the "Women in the Woods" backpacking adventures, "Lil' Sprouts Garden Club", "Explore Archery", and "Mud Day, as well as creating the educational "Backyard Garden" behind the park office.

Appearing on episodes of PA Outdoor Life, Home and Backyard, and the Get Outside podcast were particularly exciting! Most memorable, though, are the many interactions she has had over the years with park visitors and co-workers, many of which have led to friendships she deeply cherishes.



Jane, a certified archery instructor, offered archery lessons at the park every summer that was popular with park visitors of all ages.



Above: In 2014, Jane worked with the Pennsylvania Game Commission on sedating and tagging bears on state game lands.



Above and on the left: Jane serving pancakes at this year's Maple Pancake Breakfast . Maple syrup making was one of Jane's favorite activities every spring time—even winning awards from DCNR for her efforts!





What are her favorite places in the park?
“The view from the Loyalsock Canyon Vista (picture on the right) never fails to take my breath away, no matter how many times I experience it! The section of the Link Trail along the east branch of the Double Run is undoubtedly my very favorite section of trail in the park for its rich plant diversity flourishing along cascading waters.”



On the left: Jane guiding a “Women in the Woods” backpacking adventure.

What is her favorite advice to park visitors?

“Immerse yourselves in the natural beauty around you in any way you can, whether it is hiking the trails, strolling alongside the Loyalsock Creek (put your feet in it, too!), or viewing the dark skies at night. Allow the restoring powers of Creation to bring peace and rest to body and mind!”

Below: Jane pictured with former Park Manager Bill Kocher from 2002 when the new park office was opened.



What are her plans for the future?

“My husband and I have a home on ten acres of land within a few miles of the park on which we are creating wildlife habitat from old farmland. We have many projects to keep us occupied, but hope to take occasional trips throughout the state (fill my park passport!) and to the western US and Canada. Of course, Worlds End is our favorite park, so we'll continue to spend many days enjoying all its many benefits!”

PA Outdoor Corps at Worlds End



A Pennsylvania Job Corps crew, working alongside park management and staff, has been busy at Worlds End this spring getting the park ready for summertime! Pictured on the right is one of their projects—construction of a stone bench and poured concrete walkway at the park’s beach area. These enhancements will help control erosion during flooding events.

In addition to working on their projects, the crew also participates in outdoor activities at the park’s they work at. Pictured above is the crew attending an archery class taught at the park by Jane Swift, the park’s Environmental Educator, and Michael Scott, Vice Chair of the Friends of Worlds End State Park, both certified archery instructors.





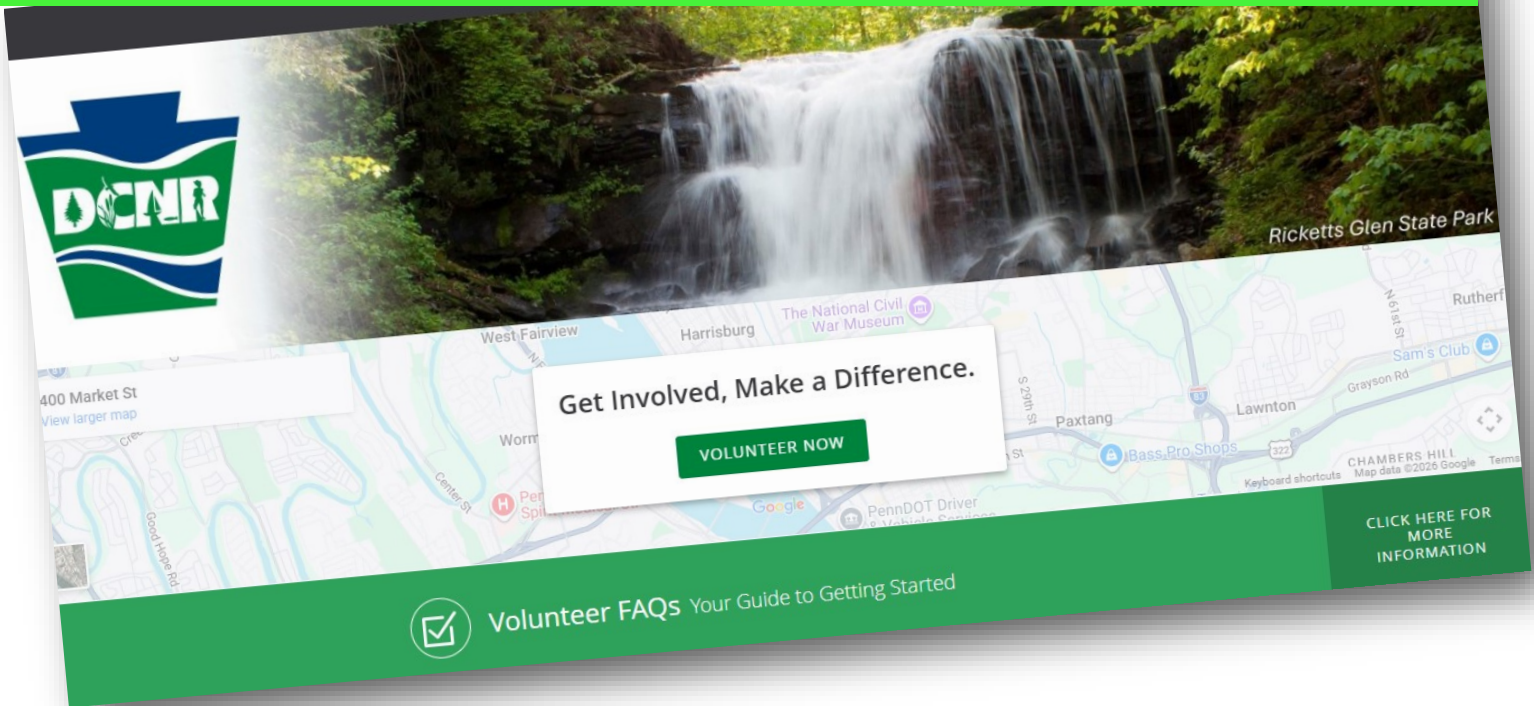
Another project of the PA Outdoor Corps at the park was working with park staff in restoring the Beach Grove picnic area located across Route 154 from the park office. This included fixing old fireplaces, refurbishing tables and seating, rebuilding paths, and clearing brush. (Pictured above and the lower left).

Archery class for the PA Outdoor Corps— pictured on the right and below.





New DCNR Volunteer Website



The Department of Conservation and Natural Resources (DCNR) has launched a new, streamlined Conservation Volunteer system which modernizes how DCNR engages volunteers by simplifying sign-ups, standardizing processes, and automatically tracking hours and milestones. Volunteers can earn rewards as they reach service benchmarks, including free camping and cabin stays in state parks and forests, and the system makes it easier for individuals and groups to sign up — building on the more than 56,000 volunteer hours contributed to state parks across 3,300 projects in 2025 alone.

“Pennsylvania’s parks and forests are some of our greatest assets — and they rely on dedicated volunteers to keep them thriving,” said DCNR Secretary Cindy Adams Dunn. “This new system makes it easier than ever for people to get involved, give back, and connect with the outdoors while helping us care for these spaces for future generations. We are grateful to the individuals and groups who spend time each year picking up trash, maintaining trails, and supporting events outdoors. Thank you for your service to our beautiful natural spaces.”

Volunteers play a critical role in maintaining and improving public lands — from repairing and maintaining trails to supporting campgrounds, enhancing visitor experiences, and promoting healthy forests. DCNR is unveiling the new system during a month-long recognition of volunteer contributions across the Commonwealth, including the work of Friends groups supported by the Pennsylvania Parks and Forests Foundation (PPFF).

“We are grateful to the individual volunteers and our Friends groups for their consistent, dedicated service to supporting public lands,” said PPF President Marci Mowery. “These amazing people donate their time and talent, working alongside state park and forest staff, to help make Pennsylvania’s state parks and forests some of the best natural spaces in the country, and we thank them for their service.”

DCNR encourages Pennsylvanians of all ages and backgrounds to get involved. Volunteer opportunities include trail maintenance, campground support, facility improvements, environmental education, and conservation projects, including maintaining and improving all trails to ensure safety, accessibility, and sustainability; caring for recreational facilities, such as pavilions, playgrounds, gardens, and picnic tables; assisting with campground upkeep, including campsite maintenance, trash cleanup, and serving as a campground host.

The new system allows DCNR to automatically track logged volunteer hours and subsequent rewards as milestones are reached. Those rewards include a social media badge for anyone who volunteers and additional perks for reaching benchmarks, including:

100 hours: 1-night free state forest camping

250 hours: 2-night free state park camping

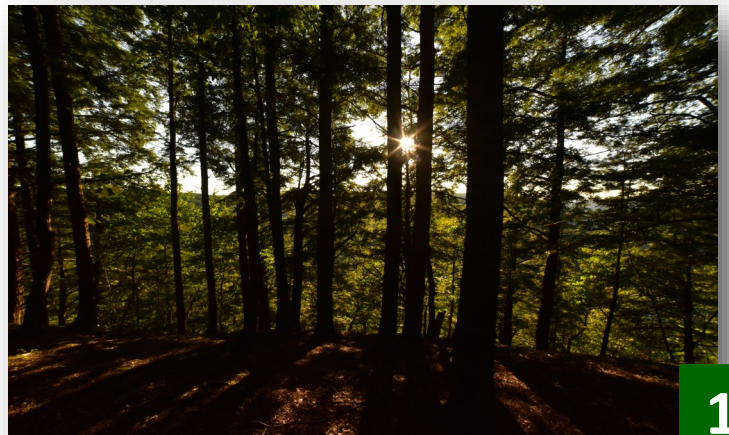
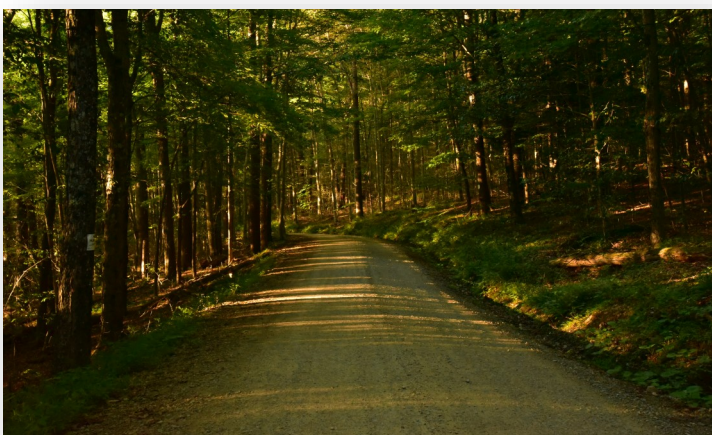
500 hours: 5-night free state park camping

1,000 hours: 2-night/3-day free state park cabin stay

Visit DCNR's YouTube page for a video depicting how to become a conservation volunteer.

Visit the new Conservation Volunteer site (<https://dcnrvolunteers.pa.gov/>) and check out the Conservation Volunteer FAQs (<https://dcnrvolunteers.pa.gov/volunteer-faq/>). Create your new volunteer profile and agree to the Conservation Volunteer agreement terms.

Download "DCNR Quick Start Guide for Volunteers": <https://maestro.pa.gov/list/attachment/download/DCNR%20Quick%20Start%20Guide%20for%20Volunteers.pdf?j=251231F&a=5p3mqteziwwdb8jzuo1p7tn9c21qxr4mx9floaik3x1utmzmax>



FIREWOOD AND ICE AVAILABLE THIS SUMMER:

Firewood is available for sale in the cabin area and campground this summer - \$8.00 per bundle. Look for the self-serve kiosk near the trash dumpsters on the right as you enter the cabin area and near the shower houses in the campground. Ice is available outside the park office and the campground loop A shower house. Money from these sales funds the park improvement projects of the Friends of Worlds End State Park.



DON'T FORGET THE KINDLING OR FIRESTARTER!

Campers sometimes forget that it takes more than just the firewood to get a good fire going. Don't forget to bring dry small branches and twigs—you can sometimes scavenge around your campsite to find some—but sometimes the camping area is picked pretty clean. You can also buy commercial firestarter sticks or bricks at most home, outdoors, or grocery stores.



New sand on the beach—all groomed and ready for another summer of beach-goers and swimmers!



Available from the Friends is the *Trails in and Around Worlds End State Park* that features shorter hikes centered on the park and the forest immediately surrounding the park. This guide is available at the same locations and vendors listed on page 20.

The Alpine Club of Williamsport has been busy this spring maintaining and making repairs along the Loyalsock Trail. It is the efforts of volunteers that make everyone's hiking adventures possible!



ARCHERY CLASSES THIS SUMMER:



Who are these classes for?

Pretty much anyone can learn archery – you do not have to be especially athletic or have previous experience. We have had grandparents learning along with their grandchildren. All you really need is a bit of patience – but most students are surprised how quickly they learn and improve.

If you have ever wanted to explore archery – here is your opportunity. Certified Archery Instructors will once again be offering archery instruction at the park this summer with an emphasis on safe archery practices. The park will provide the equipment you need.

CHECK THE PARK'S SOCIAL MEDIA FOR DATES AND TIMES THIS SUMMER!



What to Do?? Summer 2026!

Play Cornhole at the Park's New Cornhole Court!

Court!

Enjoy a challenging game of Cornhole this summer at the park's new Cornhole Court located across Route 154 from the park office in the recently restored Beach Grove picnic area! The new court was purchased by the Friends of Worlds End and installed by the park's hard-working staff. The bean-bags are located in a small cabinet right next to the court (pictured on the right).



**Your
contributions to
the Friends at
work!!**

What to Do?? Summer 2026!

Picnic in the Newly Restored Beach Grove Picnic Area!

Park staff along with the PA Outdoor Corps (see page 8) have been busy restoring the Beach Grove picnic area located across Route 154 from the park office. The renovations include the new Cornhole Court (see previous page) and a new portable toilet and hand wash station (picture on right).



What to Do?? Summer 2026!

Don't let a little rain discourage you from visiting Worlds End famous Loyalsock Canyon Vista! If you are lucky, you may get to see the fog "dance" among the mountains. As beautiful as this vista is on a sunny summer day, stormy skies and fog transforms the views into a dramatic, dynamic vision that changes with each passing second. (However, it is prudent to avoid this spot during a thunder-lightning storm. Wait until such a storm is over before venturing out.)



Visit Loyalsock Canyon
Vista After a Storm!



What to Do?? Summer 2026! Mountain Bike the Drift Mine Cycling Trails!

On the mountain just south of the park along Worlds End Road you will come across Coal Mine Road. This road loop encircles the old Drift Coal Mine and you will see parking/access points that you can use to access the mountain bike trails that overlay the hill top. Along these trails you can find ample evidence of the coal mining that once took place here (below left). For those not into cycling, both the Loyalsock Trail and Worlds End Trail (below right) will take you to many of the same areas. The Drift Coal Mine closed around 1935 and the mine shafts have been sealed—but look out for rattlesnakes that are known to inhabit the old mine site! Map of the Drift Mine Mountain Bike Trails: <https://elibrary.dcnr.pa.gov/GetDocument?docId=8442439&DocName=FD20%20Loyalsock%20Drift%20Mine%20Trail.pdf>



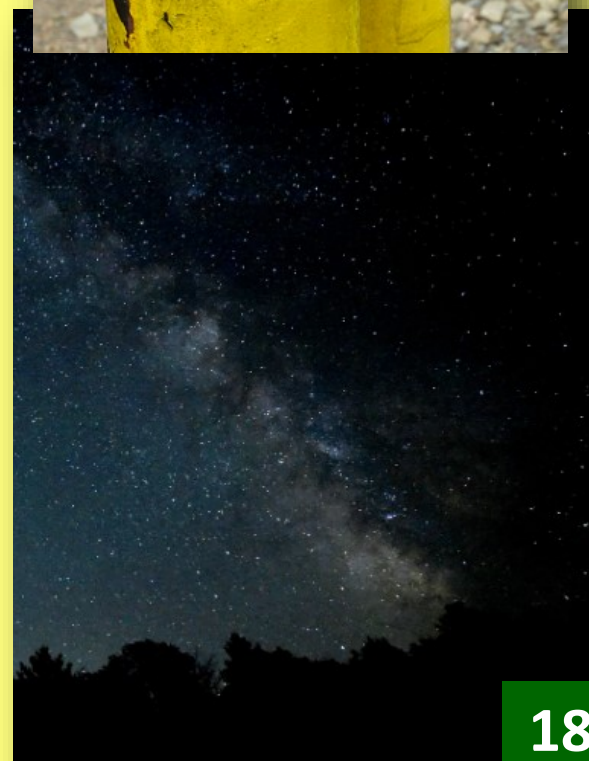
What to Do?? Summer 2026!

Visit the New High Knob Astronomy Area!

This new dark-sky observation area is located along the loop once you pass the High Knob Overlook. For hobby astronomers who have advanced equipment that needs protection from stray light, this site offers restricted access in an area sheltered from headlights. Astronomers can obtain a free vehicle permit from the district office to utilize the site ((570) 946-4049 or fd20@pa.gov). The permit includes the code that is needed to open the access gate (pictured on the right). Walk-in visitors without equipment are also welcome. This site has special regulations to protect the site, its users and their equipment, and to preserve the quality of the experience. The rules and a map are available online: ([elibrary.dcnr.pa.gov/GetDocument?docId=10546478&DocName=High Knob Astronomy Area.pdf](http://elibrary.dcnr.pa.gov/GetDocument?docId=10546478&DocName=High%20Knob%20Astronomy%20Area.pdf)). The nearby High Knob Overlook remains available to stargazers with it's vast views of the southern and western skies.



The viewing area is a Class 3 Rural Sky on the Bortle Scale, meaning that astronomers can expect the Milky Way to be visible—as seen on the right.



KEEP PENNSYLVANIA'S DARK SKIES DARK

It can take 30 minutes or more for your eyes to fully adjust to darkness. Small actions help protect night skies for people and wildlife alike.

WHY DARK SKIES MATTER

- Protect wildlife and natural rhythms
- Support human health and sleep
- Preserve our view of the stars
- Reduce energy waste

WHEN CAMPING OR VISITING A DARK SKY AREA

- Use low-level red light or add a red filter to flashlights and lamps
- Close blinds or curtains in tents, cabins, and campers
- Turn off outside lights and string lights when not in use
- Direct light downward, not toward the sky
- Be mindful of vehicle lights when arriving, leaving, or opening doors

CHOOSE NIGHT-FRIENDLY LIGHTING

- Use warm-colored bulbs (amber or yellow)
- Select the lowest brightness needed for safety
- Avoid decorative lighting overnight

AT HOME

- Use only the light you need
- Shield outdoor lights so they shine downward
- Install timers or motion sensors for security lighting
- Encourage your community to pass a lighting ordinance.

Smart lighting improves safety. Thoughtful, well-placed light helps everyone see better at night.

Thank you for helping protect Pennsylvania's night skies—for today and for generations to come.*



Connect with us!

  
PENNSYLVANIA
Parks & Forests
FOUNDATION  

PAParksAndForests.org | 717-236-7644

What to Do?? Summer 2026!

Hike The Falls and Views Loop Trail!



Get ready for your summer hiking adventures —taking you to over 90 waterfalls and 40 views—in our most comprehensive hiking guide that features Worlds End and the surrounding Loyalsock State Forest ***Falls & Views Loop: Exploring the Wildness of Worlds End State Park and Loyalsock State Forest.*** This is a 70-page guide with 3 maps detailing over 77 miles of trails.

The guide includes a 26 X 19 water-and-tear resistant sheet with detailed maps on both sides.

This map and guide is available from:

- [The Worlds End State Park Office](#)
- [The Sullivan Review](#)
(<https://thesullivanreview.com/maps/>)
- [Otto's Bookstore in Williamsport](#)
- [Keystone Trails Association](#)
(<https://www.kta-hike.org/>)

Find out how to get to the numerous waterfalls on Dutters Run (one of them pictured above) on page 36 of the guide.

Join the
**Friends of Worlds
End State Park**

for **FREE!**

All we need is your email address so that we can email you the THE VISTA four times a year!

To get on our email list, see our website:

<https://www.friendsofworldsendsp.org/mailling-list>

Of course we always welcome contributions! To contribute, see our website:

<https://www.friendsofworldsendsp.org/donate>

If you prefer to donate by mail, please make checks payable to the PPF and include Friends of Worlds End on the memo line. Checks should be mailed to:

Michelene Scott, Treasurer
Friends of Worlds End State Park
PO Box 62
Forksville, PA 18616



The Friends of Worlds End State Park is a Chapter of the Pennsylvania Parks & Forests Foundation, which is a 501(c)(3) non-profit organization—contributions to which are tax deductible to the fullest extent of the law. No goods or services were received in exchange for this contribution. The official registration of the Pennsylvania Parks & Forests Foundation may be obtained from the Pennsylvania Department of State by calling toll free within Pennsylvania 1-800-732-0999. Registration does not imply endorsement.

PHOTO CREDITS: Cover — Loyalsock Canyon Vista by Dan Mumford. Page 2: Dan Mumford; Pages 3-7: Jane Swift. Pages 8-12: Dan Mumford. Page 13: Dave Kowalewski, Dan Mumford. Pages 14-18: Dan Mumford. Page 21: Dan Mumford.