

The Newsletter of the Friends of Worlds End State Park.



# *The Vista*

Autumn 2021

Vol. 3 Issue 4

## Inside This Issue:

- The New Amphitheater
- Looking Back at Summer 2021
- The Flood of 2011 - 10 Years Later
- Autumn Destination – Shumans Lake

To conserve, support and protect the park's resources by promoting education, recreation, and stewardship



82 Cabin Bridge Road  
PO Box 62  
Forksville, PA 18616

570-924-3287

friendsofworldsendsp@gmail.com

Follow and Like us on  
Social Media:



facebook.com/  
friendsofworldsendsp



instagram.com/  
friendsofworldsendsp

### Board of Directors:

Dave Engle  
Chairman

Michael Scott  
Vice-Chairman

Micheline Scott  
Treasurer

Kyle Fawcett  
Social Media Outreach

Dan Mumford  
Secretary - Editor

Lisa Engle

Dave Kowalewski

Lisa Wilcox

Tom Yarnall



## ANNUAL MEETING NOVEMBER 17, 2021

The **Friends of Worlds End State Park** annual meeting will be on Wednesday, November 17, 2021 at 4:00pm in the park office. In addition to reviewing current projects, the agenda will include planning for events celebrating the park's 90<sup>th</sup> anniversary in 2022. If you cannot make it to the meeting, please feel free to share your thoughts and ideas with us using our email address – see to the left. (As the meeting date approaches, please check our Facebook page in case there are any changes to the meeting date or location given the uncertainty with pandemic restrictions at that time.)

As part of the anniversary celebrations, **Worlds End Day** will return – mark your calendars for **Saturday July 30, 2022** – a day that will feature activities for the entire family including animal presentations and local community groups exhibits. See future issues of **The Vista** and our Facebook page for updates.

In time for the park's anniversary, we are pleased to report that the park's new amphitheater is nearing completion – see the next page.

As another part of the anniversary celebration, **The Vista** will be featuring articles on park history over the coming year – starting with this issue's look back ten years ago at the flood of September 2011 – see page 10.

Finally, we celebrate the season by highlighting another beautiful Sullivan County autumn location – Shumans Lake. See page 15.





## Amphitheater Nears Completion!

The materials purchased by the Friends of Worlds End State Park for the new park amphitheater arrived by truck in early July (see photo to the right). This was preceded by a lot of site-preparation work by park staff – demolishing the old amphitheater, grading the grounds and digging foundation trenches (see photo bottom right).

Park staff are now hard at work erecting the new structure (photo above) – a project complicated by the heavy rains that fell through much of July.

The completed amphitheater will feature a roof, a new stage, lighting and sound system. Despite the rain delays, this project will be completed in plenty of time for use during the park's 90<sup>th</sup> anniversary celebration in 2022. Check out future issues of *The Vista* for updates – including details on the dedication ceremony!







**ABOVE:** Concrete footers were poured in 6-foot-deep trenches.

**ABOVE RIGHT:** Park staff graded the site and removed dirt, rocks and debris.

**BELOW:** The frame goes up - topped by the roof trusses.

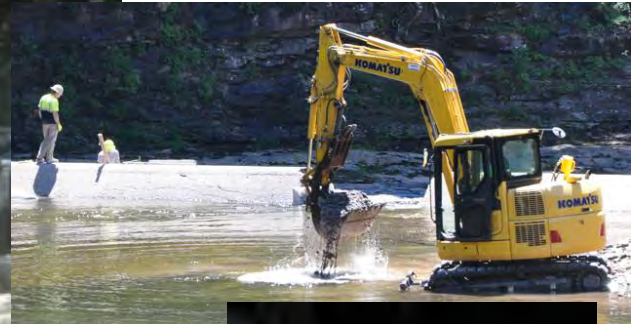


## THANK YOU!

Our thanks to the park management and staff for their hard work on making this project possible. And thanks also to our contributors and firewood and ice customers for the funds used to purchase the building materials.



# Swimming Area Beach and Dam Repairs



Major renovations to the dam that creates the park's swimming area were completed in early August – allowing the swimming area to reopen on August 4 after having been closed during the construction project. Unfortunately, heavy summer rains and high creek levels caused delays. Above and to the right is the dam site while under construction

**To the right:** this project included removing a large pile of gravel and rocks from the swim area that had been deposited from last spring's high water resulting from the snow melt. 32 truckloads of material were removed from the swimming area!



**To the left:** Repairs to the beach area included new drainage intended to prevent run-off from the road washing away the beach sand.



# Summer 2021 at Worlds End!



The park's archery classes were popular with all ages, with certified archery instructors Michael Scott and Jane Swift providing instruction in safe archery practices. Check out the park's Facebook page for possible future class dates!



A July 10 geology presentation and park tour by geologist Simeon Suter was informative and well attended.







A June 25 PA Game Commission bear presentation – the bear was captured in Sullivan County to be relocated to a safer location.



On June 12, Worlds End State Park was inducted into the Old Growth Forest Network (OGFN). Attending the dedication ceremony was DCNR Secretary Cindy Adams Dunn, joined by Dr. Joan Maloof – the founder of OGFN - along with park management and the Friends of Worlds End. For more about the OGFN: <https://www.oldgrowthforest.net/>

A former park intern, Jake Klinger, returned to the park this summer – as a new Pa Game Commission Warden! Here he is pictured at a park bear program, showing attendees how a captured bear is carefully processed to be relocated to a safer location.







**To the left and below right:** Park staff moved a 1941 monument to the first local game protector, A. Lincoln Cox, and first Sullivan County forest ranger John Annable, to a more visible location near the park office. A rededication ceremony is being planned for September 18. See the next issue of *The Vista* for coverage of the ceremony and more about the two men being memorialized.



**To the left:** A severe storm on August 12 brought down numerous trees and powerlines in the park and across Sullivan County. The park was without power for several days – necessitating closure of the campground and cabins until the storm damage could be removed and power restored. Fortunately, there were no injuries in the park.



## Loyalsock State Forest Camping Policy Changes



Camping spots in the Loyalsock State Forest have recently been re-numbered and a new policy has been put in place – even numbered campsites are only available January 1 through June 30; and odd numbered campsites are only available July 1 through December 31 (this odd/even policy does not apply to the Masten Campground and Bridle Trail campsites – those sites are available year-round). A map with the renumbered campsites, the camping policy, and how to get a permit to use these sites, is available on the map page of the DCNR/Loyalsock State Forest website:

<https://www.dcnr.pa.gov/StateForests/FindAForest/Loyalsock/Pages/Maps.aspx>

### **PENN'S PARKS FOR ALL REPORT NOW AVAILABLE:**



The PENN'S PARKS FOR ALL – A PLAN FOR PENNSYLVANIA'S STATE PARKS OF TOMORROW final report was released in July and is available on DCNR's website:



A Plan for Pennsylvania's  
**State Parks  
of Tomorrow**

[elibrary.dcnr.pa.gov/GetDocument?docId=3827444&DocName=PennsParksforAllFinalReportJuly2021.pdf](https://elibrary.dcnr.pa.gov/GetDocument?docId=3827444&DocName=PennsParksforAllFinalReportJuly2021.pdf)



# Looking Back at the Flood of 2011

Worlds End  
**HISTORY**  
1932-2022

*As part of Worlds End 90<sup>th</sup> Anniversary Celebration in 2022, **The Vista** will be featuring a series of articles on park history. We start with some relatively recent history from 10 years ago – the historic flooding of September 2011.*

The stage for the flooding of early September 2011 was set in August as the remains of Hurricane Irene dumped between 3-8 inches of rain across much of eastern Pennsylvania. Sullivan County received 8.7 inches of rain in August – compared to the usual August average of 4.7 inches – causing serious flooding. Everyone was relieved to see the creeks and rivers receding. However, no one imagined how short-lived this sense of relief would last – and that even worse was soon to come.

Less than 10 days later, the remains of Tropical Storm Lee moved up the Appalachians, and by September 4, it started to rain again in central Pennsylvania.

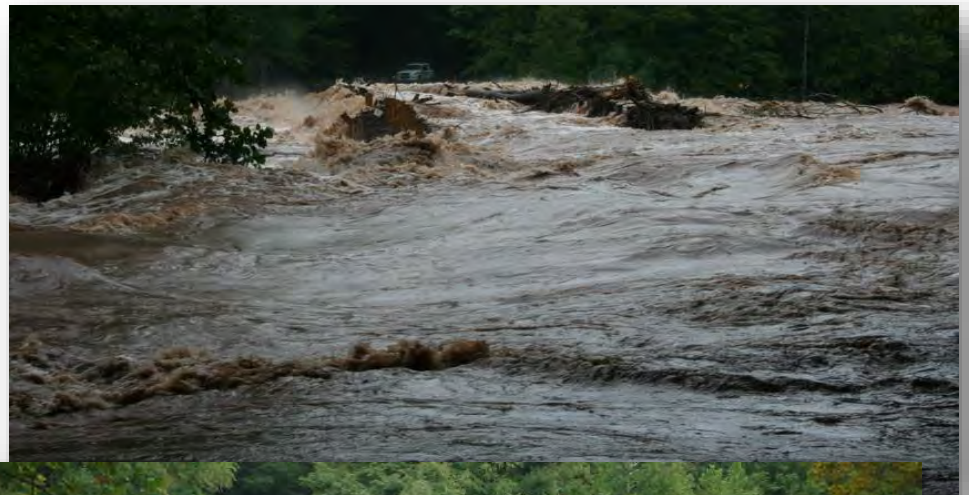


ABOVE: Loyalsock Creek flows through the parking lot in front of the snack shop and across route 154 into the beach area. From the Worlds End Vista high above the beach, you can see the creek surging under the route 154 bridge and submerging the beach.



The Weather Channel forecast map (see right) showed what we were facing – with 6-10 inches of rain forecasted. Unfortunately, this forecast was all too accurate as rain totals from September 4th to the 8th averaged 6 inches across central Pennsylvania with some locations exceeding 10 inches. All this rain fell on soil already saturated from the Irene rains in August – flowing instantly into creeks and rivers. Flash flood warnings were issued and evacuations soon got under way.

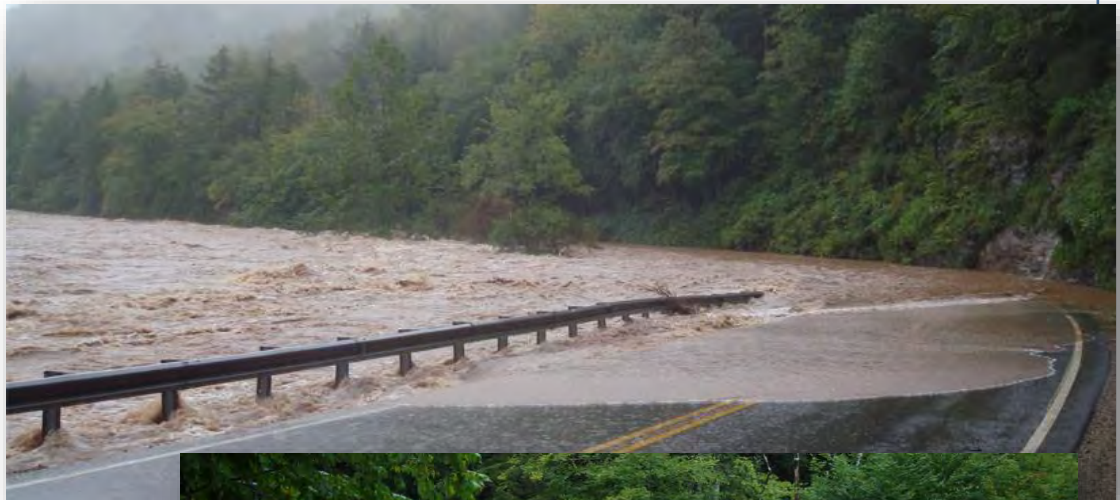
On September 7 the Loyalsock crested at a record 34 feet at Barbours – eclipsing the previous record crest by nearly 10 feet (set in January 1996). Bridges, roadways and homes were swept away by the surging waters. In the park, Cabin Bridge Road was inundated, as was route 154, cutting the park in half. Several feet of water covered the day-use area with picnic tables being tossed about.



ABOVE: The Loyalsock inundates Cabin Bridge Road. This stranded several cabin residents – until the waters receded enough to allow them to be rescued and for the road to be repaired – see above and to the left.



RIGHT: The Loyalsock covers route 154 – cutting off the campground from the rest of the park.



RIGHT and BELOW: As the water level drops – damage to the route 154 bridge near the park’s day-use area is apparent.



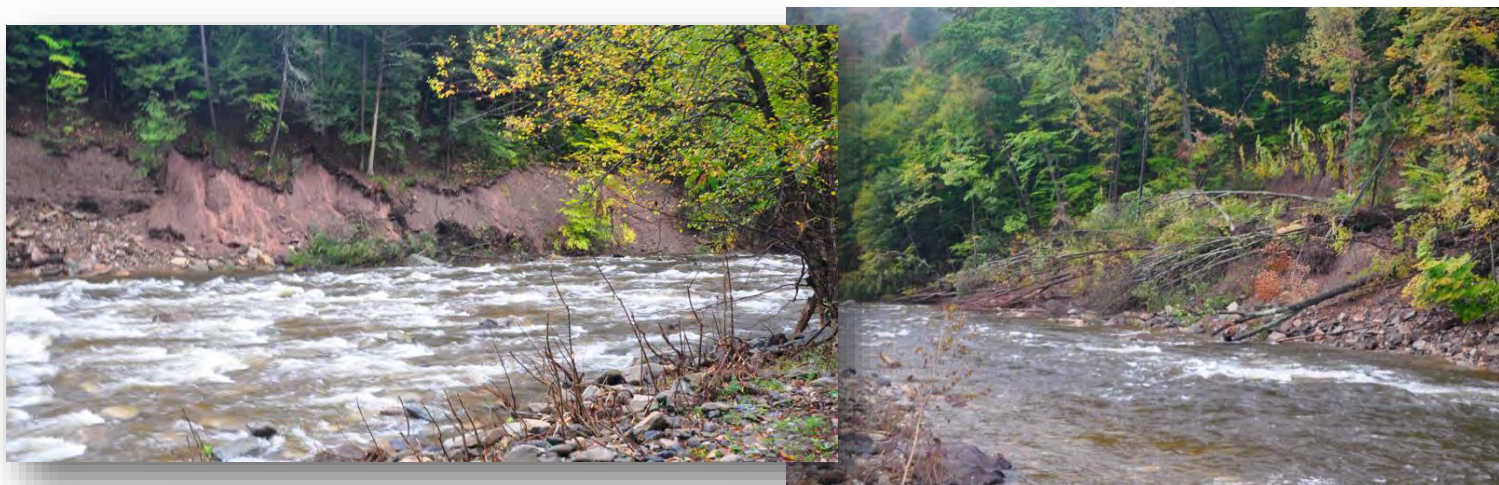
RIGHT: Flood waters swirl around the information kiosk on the beach. Notice the route 154 bridge in the background just barely above the water.



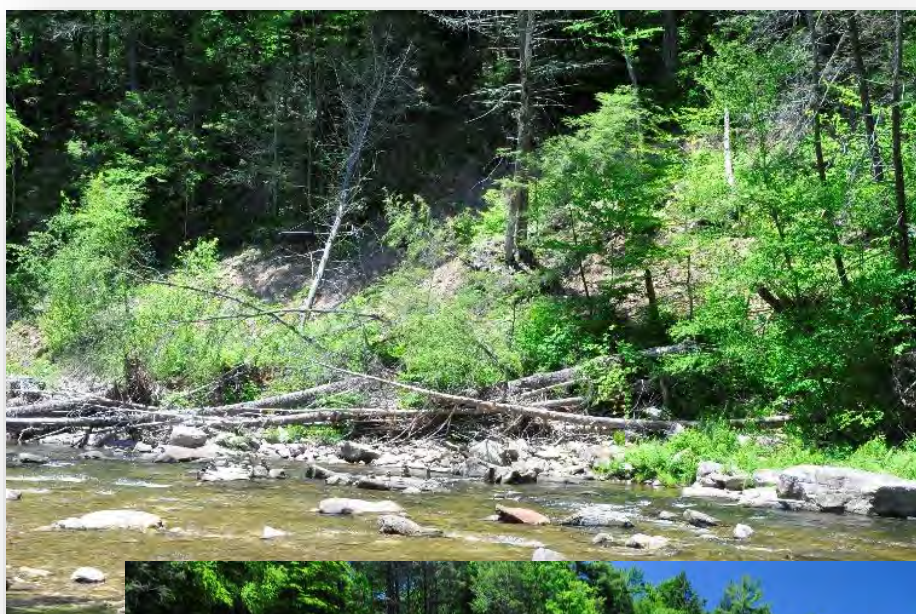
After the waters recede – picnic tables lie scattered around the day-use area and the parking lot near the snack stand.







**ABOVE:** As the flood waters swirled through the “S” curve of Loyalsock Creek as it flows through the park – major erosion of the creek banks occurred and trees were toppled. 10 years later, the scars from the flooding in the park is still evident – as seen in these July 2021 pictures (right and below right) of the creek - near Cabin Bridge Road and looking upstream from the route 154 bridge.







Staff from the park, forestry and PennDOT spent the next several weeks repairing the damaged roads, bridges and facilities – including Cabin Bridge (above right) with the park back up and running by that October.

DATA SOURCE: National Weather Service and NOAA:

<https://www.weather.gov/ctp/TSLeeFlooding>

<https://water.weather.gov/ahps/region.php?state=pa>

Our thanks to Worlds End Park Manager Bill Kocher for providing most of the pictures that accompanied this article.

## **FIREWOOD AVAILABLE IN THE CABIN AREA DURING THE FALL AND WINTER:**

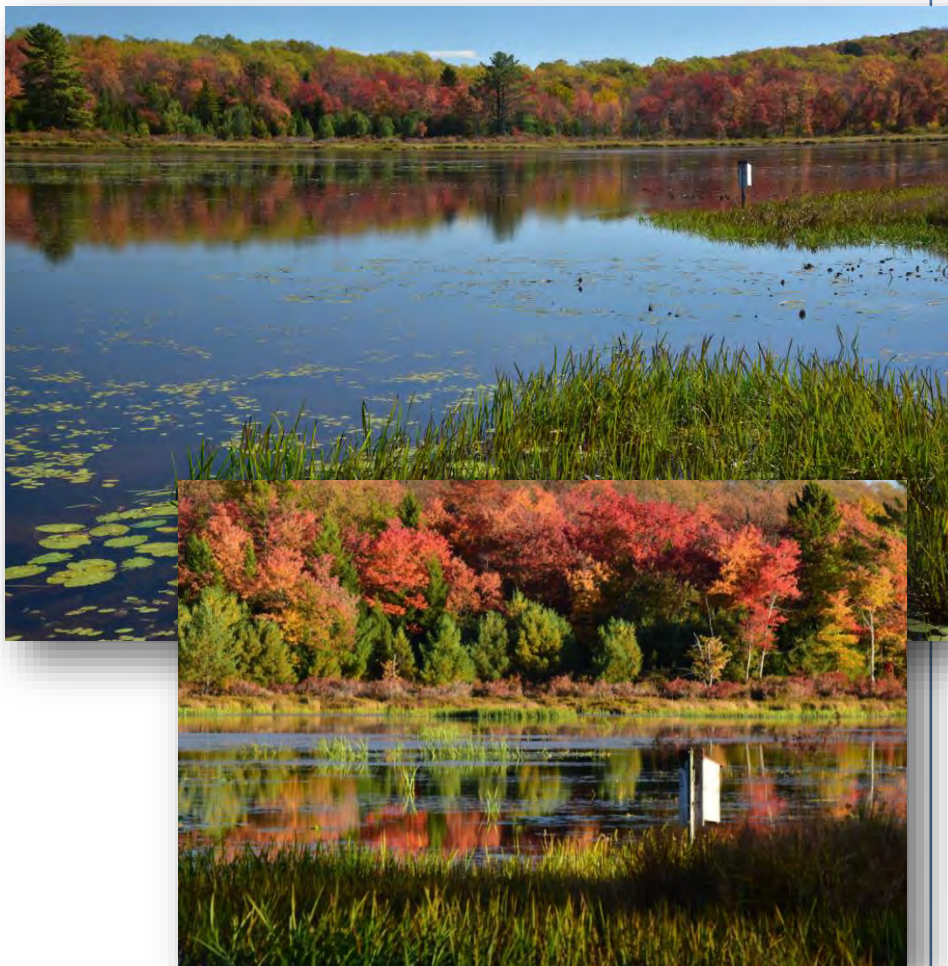
Firewood will be available for sale in the cabin area this fall and winter - \$8.00 per bundle. Look for the self-serve kiosk as you enter the cabin area on the right near the trash dumpsters. Money from these sales funds the park improvement projects of the Friends of Worlds End State Park – including the new park amphitheater.





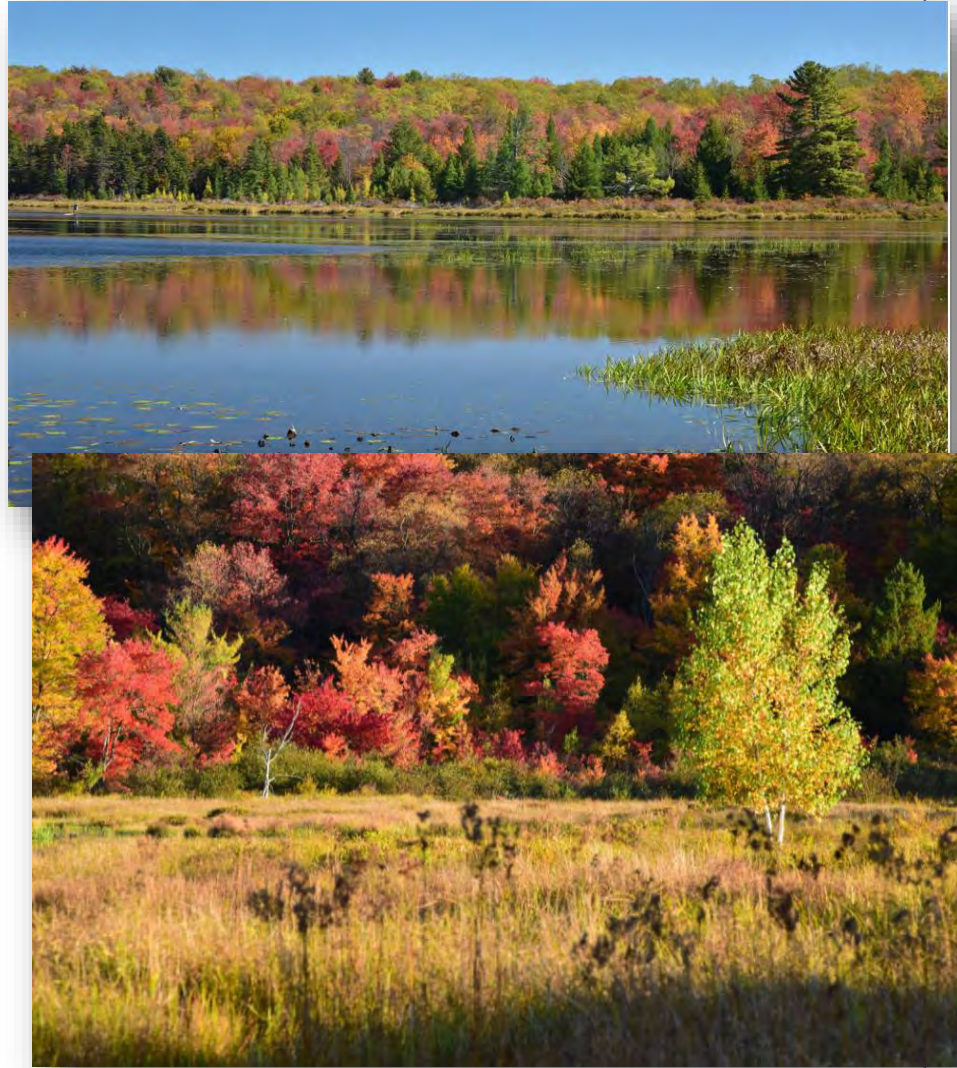
## *Autumn Destination: Shumans Lake*

Last autumn in *The Vista* we featured three Sullivan County lakes, Hunters Lake, Bear Wallow Pond and Sones Pond, as destinations for those seeking beautiful foliage locations and photo opportunities. This autumn we will add a fourth – this one a lake in the eastern part of Sullivan County that has a connection with Worlds End – Shumans Lake. This lake is on public Pa Game Commission lands (so wear some orange if visiting during hunting season). The best time to see and photograph it is in the late afternoon as the lowering sun lights up the lake from the west.





Bring binoculars to help you view the wildlife – including eagles. If you want to photograph the lake, bring a zoom telephoto lens because this is a large lake and you will need such a lens to photograph the flaming maples on the far shores. And what is this lake's connection to Worlds End State Park? If you were to travel up Loyalsock Creek from Worlds End you would pass under the iron bridge on Rock Run Road, then the Haystack Rapids, then pass under route 220, and you would eventually reach the village of Lopez...then shortly afterward ...Shumans Lake. So yes, Shumans Lake is a source of Loyalsock Creek.



**TO GET THERE:** From route 487 near Lopez, turn onto DUTCH MOUNTAIN ROAD. Turn right onto ROUSE POND ROAD and take the next right up a short hill to the Game Commission parking lot. Walk down the hill and cross Rouse Pond Road and proceed down the gated dirt road for a short, straight downhill walk to the shore of Shumans Lake.





# 90<sup>th</sup> Anniversary Worlds End State Park 1932 – 2022

**Coming in 2022:**

**See the next issue of *The Vista* for more about the park's 90<sup>th</sup> anniversary celebration!**

## **And Also Coming in 2022:**

Ruth Rode and Dave Kowalewski are working on *Falls & Views Loop: Exploring the Wildness of Worlds End State Park and the Loyalsock State Forest!* This will be a backpacking map/guide featuring over 17 vistas and 50 waterfalls. Look for updates in the next issue of *The Vista*!



To support the Friends of Worlds End State Park, check out the SUPPORT section of the Pennsylvania Parks and Forests Foundation website and designate your gift to the FRIENDS OF WORLDS END STATE PARK!

<https://parksandforests.org/friends-groups/donate-to-a-chapter/>

*The Friends of Worlds End State Park is a Chapter of the Pennsylvania Parks & Forests Foundation, which is a 501(c)(3) non-profit organization—contributions to which are tax deductible to the fullest extent of the law. No goods or services were received in exchange for this contribution. The official registration of the Pennsylvania Parks & Forests Foundation may be obtained from the Pennsylvania Department of State by calling toll free within Pennsylvania 1-800-732-0999. Registration does not imply endorsement.*

PHOTO CREDITS: Cover: Loyalsock Canyon Vista. Dan Mumford. Pages 2: Dan Mumford; Page 3: Michael Scott, Dan Mumford, Kyle Fawcett. Page 4: Jane Swift, Diane Folmar, Dan Mumford, Kyle Fawcett. Page 5: Dan Mumford. Page 6: Dan Mumford, Jane Swift. Page 7: Jane Swift, OGFN website. Page 8: Dan Mumford, Michael Scott, Jane Swift. Pages 10-12: Bill Kocher. Page 13: Bill Kocher, Dan Mumford, Dave Kowalewski. Pages 14: Dave Kowalewski, Bill Kocher. Pages 15-16: Dan Mumford.