

The Newsletter of the Friends
of Worlds End State Park

Vol. 4 No. 3
Summer 2022

The Vista

90 Years of Summer Fun at Worlds End!



To conserve, support and protect the park's resources
by promoting education, recreation, and stewardship.



82 Cabin Bridge Road
PO Box 62
Forksville, PA 18616

570-924-3287
friendsofworldsendsp@gmail.com
www.friendsofworldsendsp.org

SUMMER 2022!

While every season has its magic at Worlds End...it is hard to beat summer at the park! The picnics with the smells of cooking hamburgers and hot dogs...the dazzling green of the hillsides as you hike the many trails...and the roar and flickering light of a campfire at night! Unique to the summer is the refreshing splash of the crystal-clear waters of the Loyalsock at the park's **BEACH AREA**. We continue our celebration of the park's 90th anniversary by looking back using vintage photos of the beach ...see page 13. And to celebrate further, join us on Saturday July 30 for **WORLDS END DAY 2022**...see page 9. And in time for the celebrations this summer, we are pleased to announce that the new park **AMPHITHEATER** will be open in time for this summer's events...see page 4.

We also welcome this summer a new park manager, **CHAD McKENRICK**... see page 3. Additionally, we are pleased to announce that our new website, www.friendsofworldsendsp.org, is up and running – making it easier for us to stay in touch with our members and share information ...see page 5.

Also in time for summer and autumn hiking season, our new map and guide - **Falls & Views Loop: Exploring the Wildness of Worlds End State Park and Loyalsock State Forest** – is expected to be available by Worlds End Day in July...see page 11.

BOARD OF DIRECTORS:

Dave Engle – Chairman
Michael Scott - Vice-Chairman
Micheline Scott – Treasurer
Kyle Fawcett - Social Media Outreach
Dan Mumford - Secretary – Editor
Lisa Engle
Dave Kowalewski
Lisa Wilcox
Tom Yarnall

Follow and Like us on Social Media:



facebook.com/
friendsofworldsendsp



instagram.com/
friendsofworldsendsp

www.friendsofworldsendsp.org

Welcome to New Park Manager Chad McKenrick



On March 18, Department of Conservation and Natural Resources (DCNR) Secretary Cindy Adams Dunn announced the appointment of Chad McKenrick to serve as the park manager for Worlds End State Park.

“We are pleased to have Chad at Worlds End and have the utmost confidence he will be a great addition to the park and the community,” Dunn said. “His commitment to service, learning and leading are a great fit for a truly beautiful state park in a wonderful part of the commonwealth.”

“This is a fantastic park and I look forward to making connections with the community and welcoming visitors, old and new alike,” McKenrick said. “It is my goal to represent DCNR and its mission of welcoming all visitors by providing friendly and helpful experiences that assist in connecting people to nature and the majesty of this park.”

He succeeds Bill Kocher, who recently took over operations at Bald Eagle State Park.

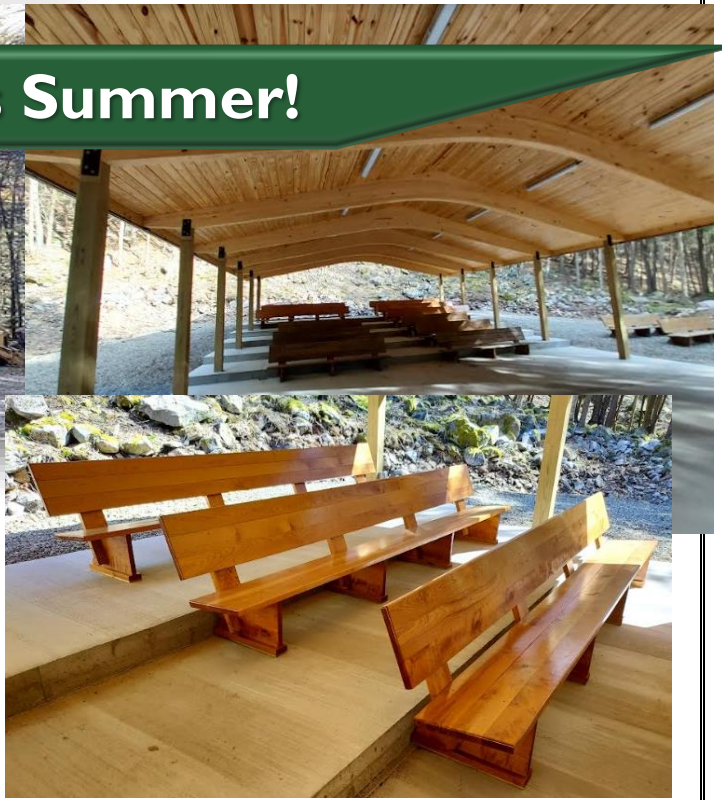
A native of Pennsylvania and graduate of the Punxsutawney Area School District, McKenrick previously served as the manager at Sinnemahoning State Park in Cameron County. He worked as an assistant manager at Promised Land State Park and with the Fish and Boat Commission in various locations across the state. McKenrick holds an associate degree in wildlife technology and bachelor’s degree in earth science from Penn State Dubois.

He credits his wife, Becky, and daughter, Laken, for supporting him as he takes on the new responsibility at Worlds End.

Amphitheater Opens This Summer!



Park staff continue on the finishing touches to the new park amphitheater – including more benches. Still to come is an expanded parking area, landscaping and audio-visual equipment. Check out the park's and Friend's social media for a dedication/opening event this summer!



Park Staff Rescue Flying Squirrel Nest!

Park maintenance staff had to cut down a maple tree in the park's day-use area that had died. Staff then discovered that the fallen tree had a flying squirrel nest in it. They then cut the nest from the fallen tree and attached it to a neighboring tree. The hope is that the mother will return and continue raising her young.



The FRIENDS are now on the Web!



Home

Worlds End State Park

The Vista

Join or Donate

About Us

Contact Us

<https://www.friendsofworldsendsp.org>

Welcome to the Friends of Worlds End State Park!

We are a volunteer organization organized by the Pennsylvania Parks & Forests Foundation and the Pennsylvania Department of Conservation and Natural Resources. Our mission is to conserve, support, and protect the park's resources by promoting education, recreation, and stewardship.

We invite you to support the Friends by joining.

The Friends of Worlds End State Park are pleased to announce that our new website is now online – thanks to the efforts of our Director of Social Media and Outreach Kyle Fawcett! This new resource is in addition to our Facebook and Instagram pages, and is yet another way for us to stay in touch with all of our members and everyone interested in the park and the activities of the Friends.

Right: The ABOUT US page has information on the Board of the Friends and meetings.



About the Friends of Worlds End State Park

The Friends of Worlds End State Park were formed in 2018 to conserve, support, and protect the park's resources by promoting education, responsible recreation and stewardship for present and future generations.

The Friends of Worlds End State Park are a chapter of the Pennsylvania Parks & Forests Foundation (PPFF). The PPFF is a 501(c)(3) non-profit organization. Contributions to PPFF are tax-deductible to the fullest extent of the law. The official registration of the PPFF may be obtained from the Pa Department of State by calling toll-free within PA 1-800-732-0999. Registration does not imply endorsement.

The Board of The Friends of Worlds End State Park

Worlds End State Park - Manager
Chad McKenrick

Worlds End State Park - Env. Education Specialist
Jane Swift

Friends of Worlds End - Chair

Friends of Worlds End - Vice Chair



[Home](#)

[Worlds End State Park](#)

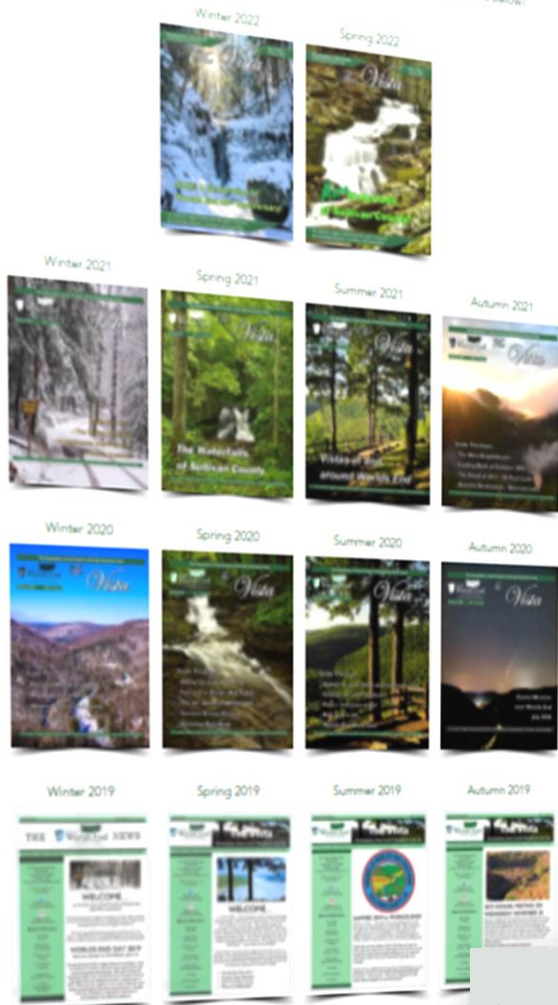
[The Vista](#)

[Join or Donate](#)

[About Us](#)

[Contact Us](#)

Check out previous editions of The Vista by clicking on the issue you would like to read below!



The current issue of THE VISTA....and all past issues are available on THE VISTA webpage ... reached using the menu at the top of the homepage.

You can use the website to join us, make a donation, or to contact us with your questions and comments.

www.friendsofworldsendsp.org

Contact Us

Do you have a question, comment, suggestion? If so please contact us via the contact form below.

If you need emergency help please contact the park, or emergency services directly.

Email

friendsofworldsendsp@gmail.com

First Name

Last Name

Email Address *

Message

Send

ARCHERY CLASSES THIS SUMMER:

Last year's popular archery course for ages 9-90 returns this summer! If you have ever wanted to explore archery – here is your opportunity. Certified Archery Instructors Jane Swift and Mike Scott will once again be offering archery instruction at the park this summer with an emphasis on safe archery practices. The park will provide the equipment you need. Classes start at 9:30 am on these dates:

Thursday, June 23.

Thursday, July 7.

Thursday, July 21.

Thursday, August 4.

Thursday, August 18.

Check the park's social media for possible September dates.

Location: Point Pavilion.



FIREWOOD AND ICE AVAILABLE THIS SUMMER:

Firewood is available for sale in the campground and cabin area this summer - \$8.00 per bundle. In the campground, look for the self-serve kiosks near the Loop A and Loop B shower-houses - and in the cabin area, near the trash dumpsters on the right as you enter the cabin community on Cabin Bridge Road. Ice is available for \$6.00 for large bags; \$3.00 for small at the campground outside the Loop A shower-house and also at the kiosk outside the camp office. Money from these sales funds the park improvement projects of the Friends of Worlds End State Park.



Our thanks for the information, photos and history provided by Worlds End State Park management and staff, including Environmental Educator Jane Swift and former Manager Bill Kocher.

Also, our thanks to Ruth Rode and her extensive knowledge of Sullivan County history and her historical archives and photos.

The State Library of PA was also a source of photos/postcards.

90th
Anniversary
Worlds End
State Park
1932 – 2022



Worlds End Award Winning Maple Syrup

Every spring some of the maple trees in the park are tapped – to create delicious maple syrup. This year's 2022 vintage of Worlds End maple syrup was judged "The Best" among other state park competitors at an annual contest, held April 27 in Erie. *On the right - Worlds End Environmental Educator Jane Swift with the award trophy.*



Route 154 Construction Closure Coming this Fall:

Starting September 19, 2022 through early May 2023, route 154, between the park office and the family campground, will be closed for repairs. (See the section of the road to be closed highlighted in yellow on the map to the right). Visitors coming from route 220 North and South should take route 87 South in Dushore to route 154 East in Forksville to the park. For those with reservations at the Family Campground, please report to the campground and not the park office for your reservation. Any campers coming to the campground by route 154 East or route 87 North will need to detour around the closure by taking route 87 North to Dushore, route 220 South to Laporte, and route 154 West to the campground. Campers coming from route 220 North or South should take route 154 West in Laporte to the campground.



BECOME A DCNR CONSERVATION VOLUNTEER:

If you are interested in volunteering at the park, we encourage you to register. Registering brings you insurance coverage and the ability to track your volunteer hours. See more on DCNR's website:

<https://www.dcnr.pa.gov/Conservation/GetInvolved/Pages/default.aspx>

<https://www.volunteers.dcnr.state.pa.us/VolunteerApplication.aspx>

COMING SATURDAY JULY 30: **WORLDS END DAY 2022**

Celebrating Worlds End 90th Anniversary!



The POCONO WILDLIFE REHABILITATION & EDUCATION CENTER presents "Amazing Animal Adaptations" in which they display several native species of reptiles, birds and mammals and demonstrate their amazing adaptations to survive! Starting at 11:00 am.

VAN WAGNER – A Celebration of Music and History! Starting at 12:30 pm.



MICHAEL KURIGA with a FALCON starting at 2:00 pm.

REPTILAND presents the fascinating world of turtles, crocodilians, lizards and snakes. See reptiles from around the world: a tortoise, lizard, alligator and a variety of snakes including a large constrictor. Starting at 3:30 pm.

CLYDE PEELING'S
REPTILAND



WORLDS END DAY 2022

Celebrating Worlds End 90th Anniversary!

These local organizations will have information booths and presentations throughout the day...



Clean Water Institute
Lycoming College
Science on the Sock



Middle
Susquehanna
Riverkeeper
Association



Sullivan County
Conservation
District



Northcentral
Pennsylvania
Conservancy

And our thanks to the following sponsors for making Worlds End Day 2022 possible...

Dushore Area Business Association



Kiwanis Club of Sullivan County



McDermott American Legion
Post 452 Mildred

SATURDAY JULY 30
starting at 11:00 at
the
park's day-use area.

MaryBeth's
WestSide Deli

Also... thanks to our generous
contributors and patrons for
making Worlds End Day 2022
possible!

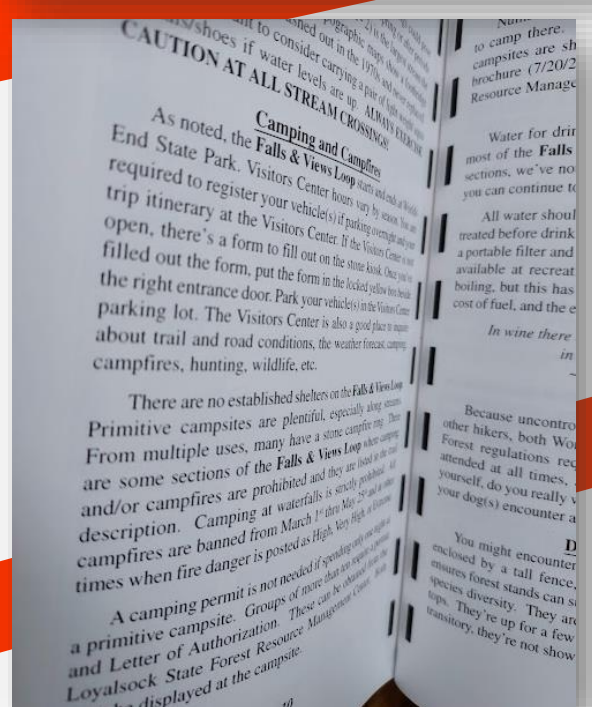
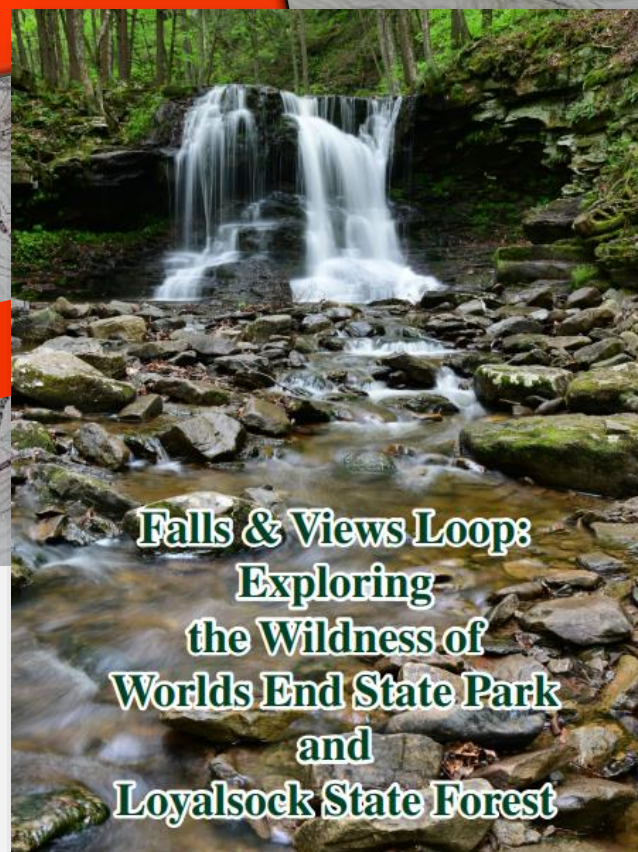


New Trail Map and Guide Available this Summer!

Ruth Rode and Dave Kowalewski, using their combined decades of local trailblazing experience, are putting the finishing touches on a new trail map and guide. Divided into five sections, the challenging 77.81-mile **Falls & Views Loop: Exploring the Wildness of Worlds End State Park and Loyalsock State Forest** starts and ends at Worlds End State Park's Visitors Center.

Included is a 70-page guide book and three maps – all in full color. The first 18 pages provide general reference information concerning the park and forest – followed by over 50 pages of detailed turn-by-turn directions highlighting waterfalls, views, geological features, trail registers, water sources, and alternate routes. Local history is also highlighted – learn about the history of coal mining, railroading and the Civilian Conservation Corps here in Sullivan County among many other things.

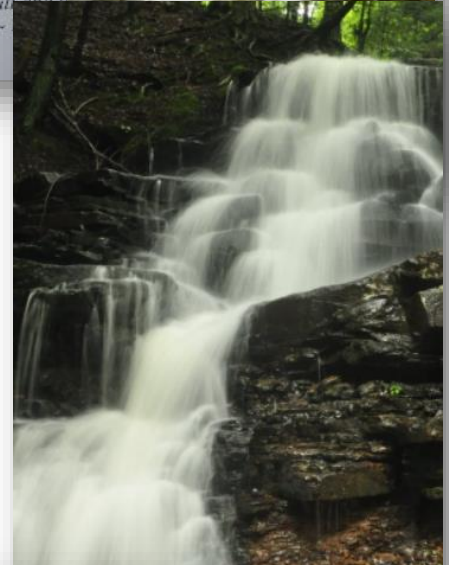
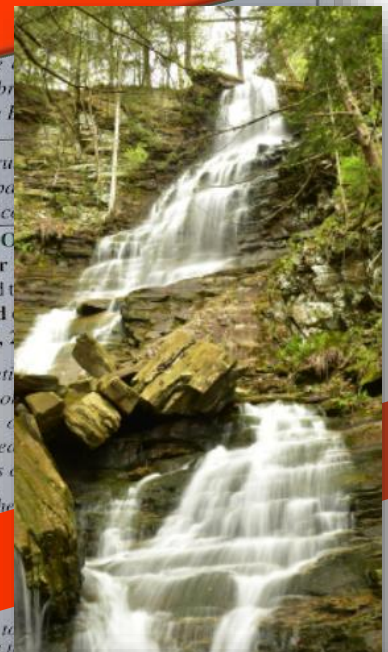
The **Falls & Views Loop** passes more than 90 seasonal falls and 40 views, hence the name. Linking almost two dozen blazed and maintained trails, the **Falls & Views Loop** will challenge the hiker with multiple bushwhacks, numerous stream crossings and steep ascents and



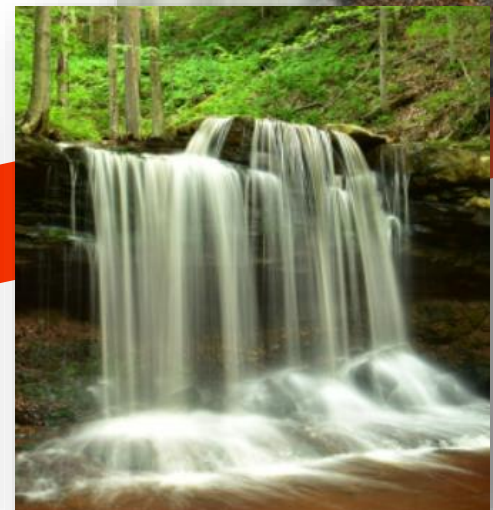
Mile	Section - 2: Hillsgrove Map
17.21	KRT ends at LT. Turn left (W) and follow LT to Split Rock.
17.85	LT turns right onto an Administrative Road.
18.16	LT turns right (NW) off Administrative Road to enter Split Rock.
18.28	Split Rock. Continue on LT to rejoin Administrative Road. <i>This isolated area is a good place to camp.</i>
	<i>... that were left behind after the ice retreat. They can range in size from pebbles to large boulders. Glaciologists sometimes use erratics to help determine the movement of a glacier.</i>
18.54	Turn right (NW), leave Administrative Road and descend LT paralleling East Branch Cape Run. Cross East Branch Cape Run twice. Continue on LT. (There are several small falls and one steep slide falls on East Branch Cape Run that require bushwhacking to see.)
18.79	Turn left (W) and follow LT to West Branch Cape Run. Look for falls (15') on right before crossing West Branch Cape Run.
19.24	West Branch Cape Run. Cross and ascend LT to High Knob Exit Road. West Branch Cape Run is last reliable water source till Dry Run (22.95), 3.71 mi. (Bushwhacking down the west side of West Branch Cape Run to white-blazed boundary line, you'll see three falls, 12, 20, and 4'. Retrace steps to LT, 1.20 mi. round trip. An Administrative Road ascends (S) to High Knob Road, 0.70 mi., roadside campsite 723.)

Mile	Section - 2: Hillsgrove Map
20.19	High Knob Exit Road. Turn right onto High Knob Exit Road. No campsite. Bark Trail (S) to High Knob.
	<i>... each truss covered by a single kingpost truss open to traffic. The Burr Arch—multiple kingpost truss by Theodore Burr, popular in bridges, usually covered by a single kingpost truss.</i>
21.21	High Knob Overlook restroom/no water on High Knob Road to SW from right end of Maintenance HQ, 2.0 mi. <i>Notice interpretive sign. The rugged terrain of the Appalachian Plateau gives the area its relief of the area is a result of the area's relief.</i> <i>The plaque in the High Knob Overlook is by McCarty W. F.</i>

The guide book includes turn-by-turn directions - highlighting local historical and geological features!



descents. Fear not the bushwhacks, as there are alternate routes that utilize established, maintained, and blazed trails. Shorter loop options are also provided for those unable to complete the entire trail in one outing – including day-hike and 2-day hiking options – or even an afternoon! You will be guided to well-known destinations like Angel Falls (above right) and High Knob Overlook (below left)... but will also see lesser-known and more remote sites like Coal Run Falls (right) and Dutters Run (below right). Look for the **Falls & Views Loop: Exploring the Wildness of Worlds End State Park and Loyalsock State Forest** for sale later this summer!



Worlds End HISTORY 1932-2022

90 Summers on the Beach!

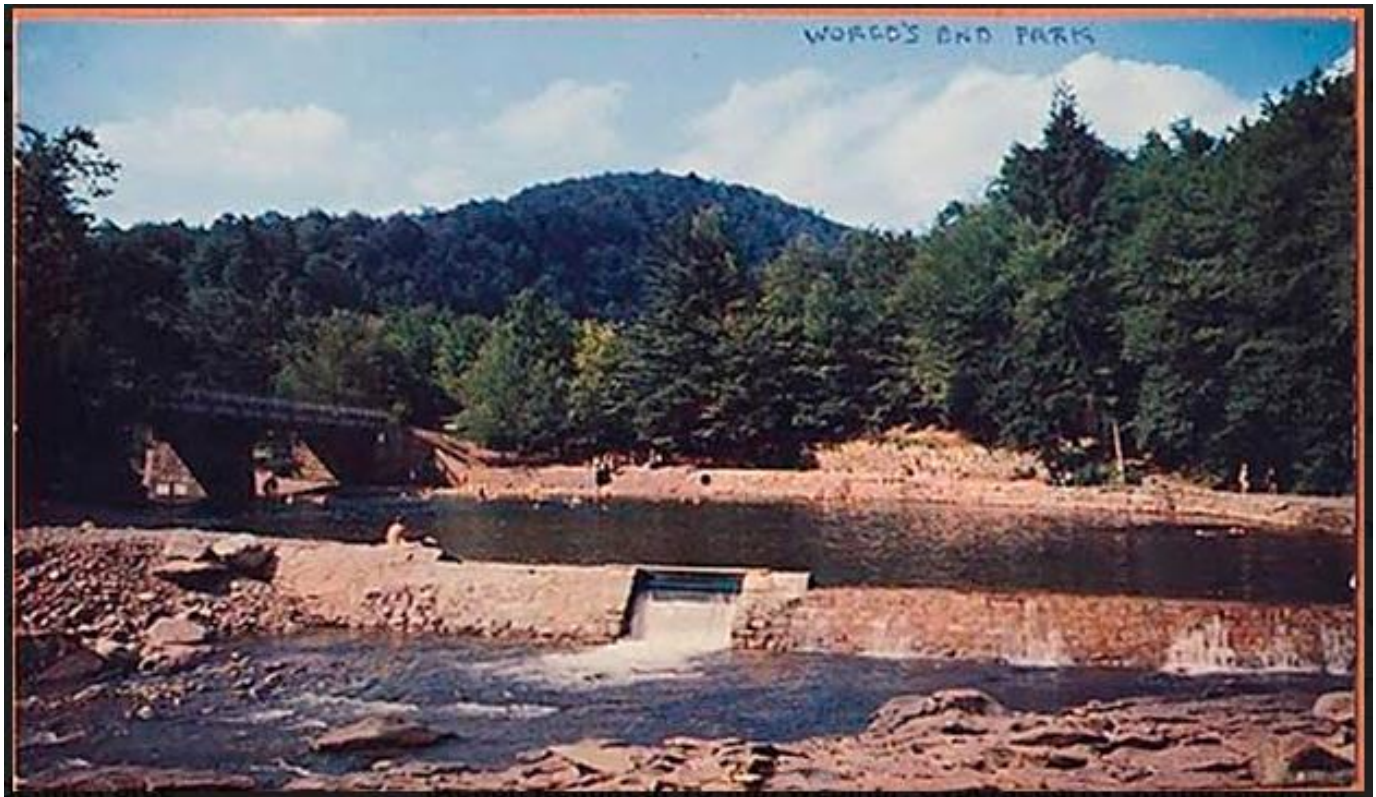
The beach at Worlds End State Park is one of the most unique, beautiful public swimming areas in Pennsylvania. Where else can you find a 1930's Civilian Conservation Corps (CCC) facility still intact, surrounded by the towering green walls of the Loyalsock Canyon? The crystal-clear mountain-stream water reflecting the sunshine and the green of the hillsides and the blue of the sky in an abstract swirl of colors? The water is always cold – but so clear, refreshing and exhilarating – especially after a hike on a hot summer day. All of this makes the swimming area at Worlds End a favorite of so many – both now - and over the past 90 years! While the swimming area was closed for much of the summer of 2021 as repairs were made to the dam – those repairs are completed and the swimming area will be open for its 90th season in 2022.



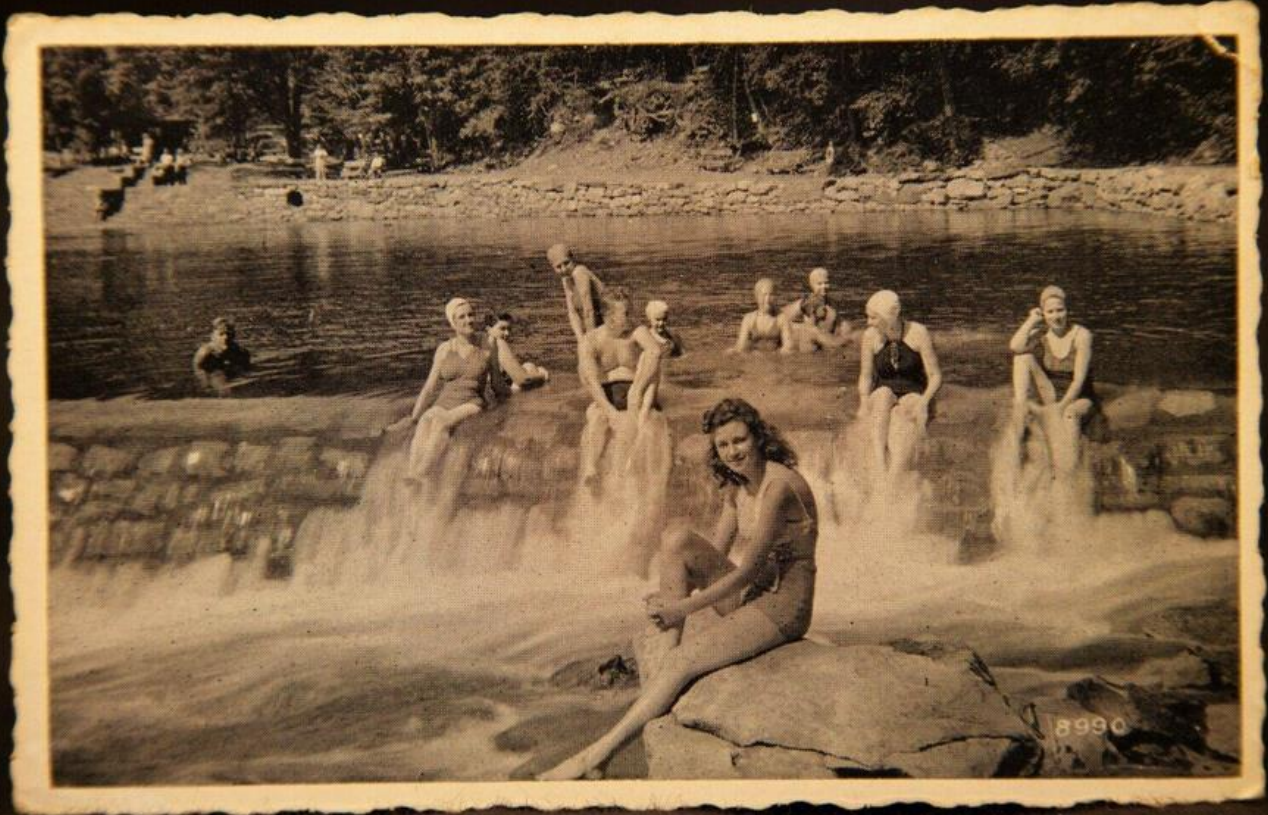
ABOVE: a photo of a busy summer day on the beach, likely from the 1930's or early 1940's, when the park was referred to as WHIRLS END. In the days before air conditioning, people would flock to the mountains on the weekends to escape the heat.

LEFT: what was to become the swimming area before the water was impounded behind a CCC-built dam.

RIGHT: Another photo from the 1930's or early 1940's when the park was known as WHIRLS END. This is at the entrance of the beach area. (For more about the history of the park's name and Whirls End – see the winter 2022 edition of THE VISTA – available on our website).



ABOVE: This old postcard shows the original dam built by the CCC in the 1930's. This dam was modified and replaced several times in the years since – most recently in 2021 when the dam was modified to incorporate additional spillways and walkways to allow easier access for park staff to maintain the dam and operate the spillways.



The post cards on this page from different decades show the evolution of swimwear, headwear, and fashion.





ABOVE: A picture of the swimming area from the Rt. 154 bridge. This picture, and the picture on the right, were taken when lifeguards still patrolled the beach. Lifeguards were removed from all state park swim beaches, including Worlds End, about 15 years ago. Since then, an open-swim / swim at your own risk policy has been in place.



RIGHT: Monika was a lifeguard in the early 1980's, and was also the artist who created the Endless Mountains coloring page (on the right) that the park still uses today.



**Worlds End
HISTORY
1932-2022**



NEWS

<https://paparksandforests.org/>

Pennsylvanians Support Increased Funding for State Parks and Forests

Statewide poll shows widespread, bi-partisan support among likely voters

Camp Hill, PA – Two-thirds (66 percent) of Pennsylvanians agree that state lawmakers should place a high priority on funding for state parks and forests, according to a recent state poll of likely voters. The agreement was broad-based and bipartisan, including majorities of voters regardless of their party affiliation, age, gender, geography, or ethnicity.

“Pennsylvanians – no matter who they are, where they live, or what political views they hold – support investing in our state parks and forests and protecting our precious natural resources,” said Brad Mallory, Board Chair of the Pennsylvania Parks and Forests Foundation (PPFF), which commissioned the scientific statewide poll.

In addition, the poll shows that 67 percent of Pennsylvania likely voters support using as much as \$125 million of the state’s share of the federal American Rescue Plan’s funding on the maintenance and repair of state parks and forests. Support for using American Rescue Plan funding also was broad-based and bipartisan, including support from 62 percent of Democrats, 66 percent of Independents, and 73 percent of Republicans.

Through every phase of the pandemic, state parks and forests provided space for improving the physical, mental, and emotional health of Pennsylvanians. In 2020, close to 47 million visitors were recorded at state parks alone, an increase of 26 percent over the previous year. And heavy use is continuing.

“Throughout the pandemic, it was universally recognized that *outside* was the place to be for our own health and wellness. State parks and forests provide a way to experience the great outdoors close to home thus the use of these public spaces exploded” said Marci Mowery, President of PPFF. “Pennsylvania Parks and Forests Foundation believes an important role that our parks and forests play is in protecting and improving human health.”

Parks and forests also have proven their economic value in Pennsylvania. According to an Outdoor Recreation Industry study, Pennsylvania ranks fifth in the nation in terms of consumer spending on outdoor recreation, generating \$29.1 billion in consumer spending annually, supporting 251,000 jobs, and generating \$1.9 billion in state and local tax revenue.

The likely voters were told that PPFF estimates that state parks and forests face a \$1.4 billion backlog of infrastructure renovations and deferred maintenance, including much-needed repairs to roads, bridges, trails, dams, water and sewer systems, cabins, restrooms, and other visitor facilities. Voters overwhelmingly support using the American Rescue Plans funds, even if it means that funding cannot be spent on other programs.

When told that state forests serve as a natural filter to remove harmful pollutants from Pennsylvania streams, rivers, and lakes, 79 percent of likely voters agreed that the state should invest in state forests to protect clean water and reduce flooding.

“Now is the time to invest in our state parks and forests,” said Mallory. “We call on the members of the General Assembly to utilize a portion of the federal American Rescue Plan funds provided to Pennsylvania to help fill this backlog so that these lands may be safe and enjoyable for all.”

To share your support, visit the Take Action Center of the PPFF website at <https://ppff.online/voice> and send a message to your state senator and representative.

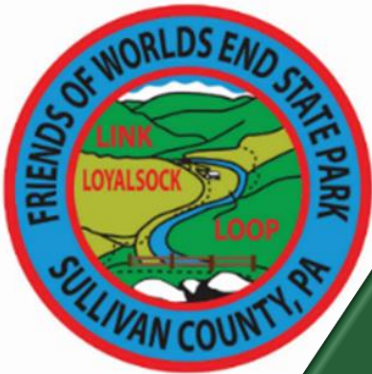
The statewide poll, conducted Feb. 21-28, 2022, by Susquehanna Polling and Research, interviewed 701 Pennsylvania likely voters and has a margin of error of +/- 3.7 percent.

VISION: Building the voice for Pennsylvania’s state parks and forests.

MISSION: PPFF’s mission is to inspire stewardship of Pennsylvania’s state parks and forests through public engagement in volunteerism, education, and recreation.



Look for Mountain Laurel – Pennsylvania's official state flower – blooming along the hillsides surrounding the park in mid-June.



To support the **Friends of Worlds End State Park**, check out the SUPPORT section of the Pennsylvania Parks and Forests Foundation website and designate your gift to the - **FRIENDS OF WORLDS END STATE PARK!**
<https://paparksandforests.org/friends-groups/donate-to-a-chapter/>

Or go to our new website:
<https://www.friendsofworldsendsp.org/join-or-donate>

The Friends of Worlds End State Park is a Chapter of the Pennsylvania Parks & Forests Foundation, which is a 501(c)(3) non-profit organization—contributions to which are tax deductible to the fullest extent of the law. No goods or services were received in exchange for this contribution. The official registration of the Pennsylvania Parks & Forests Foundation may be obtained from the Pennsylvania Department of State by calling toll free within Pennsylvania 1-800-732-0999. Registration does not imply endorsement.

PHOTO CREDITS: Page 4: Dan Mumford; Michael Scott. Page 8: Jane Swift. Page 12: Dan Mumford
Page 18: Dan Mumford.