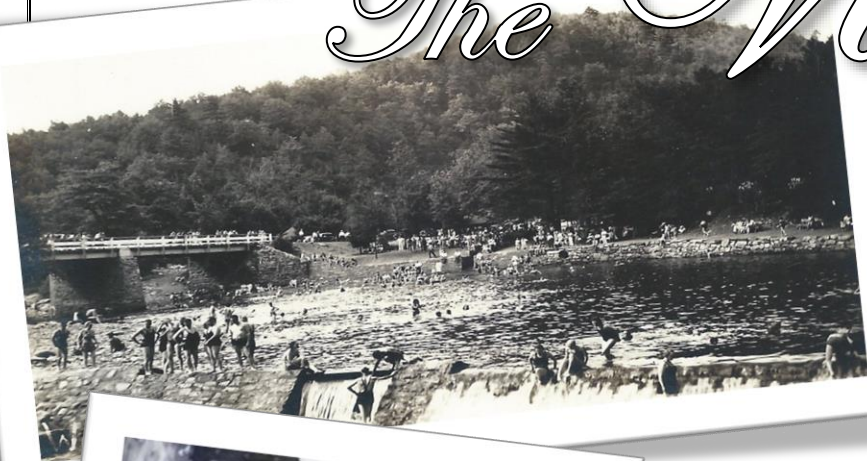


SPECIAL WORLDS END DAY EDITION

The Newsletter of the Friends
of Worlds End State Park

Vol. 4 No. 4
July 30, 2022

The Vista



Your Guide to Worlds End Day 2022

Celebrating Worlds End 90th Anniversary!

To conserve, support and protect the park's resources
by promoting education, recreation, and stewardship.

WORLDS END DAY 2022



82 Cabin Bridge Road
PO Box 62
Forksville, PA 18616

570-924-3287
friendsofworldsendsp@gmail.com
www.friendsofworldsendsp.org



Welcome! After a three-year hiatus, the **Friends of Worlds End State Park** are very pleased to bring you the return of **Worlds End Day**! 90 years ago Worlds End State Park was founded when \$50 was spent on four picnic tables. In the years that followed, in the depth of the Great Depression of the 1930's, the men of the Civilian Conservation Corps built the cabins, pavilions and beach area that we still enjoy today. Today we gather to honor the work of these founders, and all the men and women that followed them in building and maintaining this special place.

To celebrate, we have a day packed with special presentations by **The Pocono Wildlife Rehabilitation and Education Center**, famed musician and historian **Van Wagner**, falconer **Michael Kuriga** – and finally, **Reptiland**! See the program on page 3 for times and locations – with a map on page 6 to guide you. We also have many exhibitors joining us today – please stop by their tables and say hello – see page 4. Also please visit the **Friends of Worlds End** table to say hello – local trailblazing legends **Dave Kowalewski** and **Ruth Rode** will be there much of the day with their new map and guide - **Falls & Views Loop: Exploring the Wildness of Worlds End State Park and Loyalsock State Forest!**

We want to thank our sponsors for making today possible and ask that you join us in thanking them and patronizing them – see page 4. We likewise thank our membership and contributors. And finally, our thanks to the management and staff of Worlds End State Park, including park manager Chad McKenrick and environmental educator Jane Swift for their support and efforts in making today possible.

We hope you enjoy your day here at Worlds End State Park!

BOARD OF DIRECTORS:

Dave Engle – Chairman
Michael Scott - Vice-Chairman
Micheline Scott – Treasurer
Kyle Fawcett - Social Media Outreach
Dan Mumford - Secretary – Editor
Lisa Engle
Dave Kowalewski
Lisa Wilcox
Tom Yarnall

Follow and Like us on Social Media:



[facebook.com/
friendsofworldsendsp](https://facebook.com/friendsofworldsendsp)



[instagram.com/
friendsofworldsendsp](https://instagram.com/friendsofworldsendsp)

www.friendsofworldsendsp.org

WORLDS END DAY 2022

WORLDS END DAY 2022

Celebrating Worlds End 90th Anniversary!



The POCONO WILDLIFE REHABILITATION & EDUCATION CENTER presents "Amazing Animal Adaptations" in which they display several native species of reptiles, birds and mammals and demonstrate their amazing adaptations to survive!

Starting at 11:00 am at the Cliff Pavilion.

VAN WAGNER – A Celebration of Music and History!

Starting at 12:30 pm at the LT Pavilion.



MICHAEL KURIGA with a FALCON

Starting at 2:00 pm at the LT Pavilion.

REPTILAND presents the fascinating world

of turtles, lizards and snakes. See reptiles from around the world: a tortoise, lizard, alligator and a variety of snakes.

Starting at 3:30 pm. At the Cliff Pavilion.

**CLYDE PEELING'S
REPTILAND**

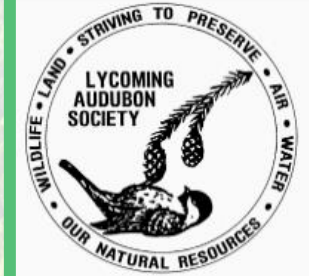


WORLDS END DAY 2022

These local organizations will have information booths and exhibits throughout the day...please stop by and check them out...located throughout the day-use area.



Clean Water Institute
Lycoming College
Science on the Sock



Sullivan County
Conservation
District



And our thanks to the following sponsors for making Worlds End Day 2022 possible...please join us in thanking and patronizing them!

Dushore Area Business Association



Kiwanis Club of Sullivan County



McDermott American Legion
Post 452 Mildred

Also... thanks to our generous
contributors and patrons for
making Worlds End Day 2022
possible!



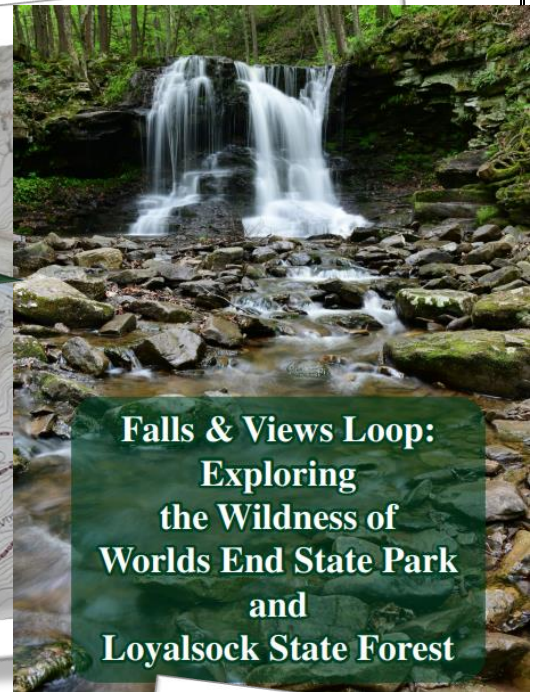
90th
Anniversary
Worlds End
State Park
1932 - 2022

Dwight Lewis
Lumber Co., Inc.



MaryBeth's
WestSide Deli

Stop by the Friends of
Worlds End table for
information and to say
hello!



Falls & Views Loop:
Exploring
the Wildness of
Worlds End State Park
and
Loyalsock State Forest

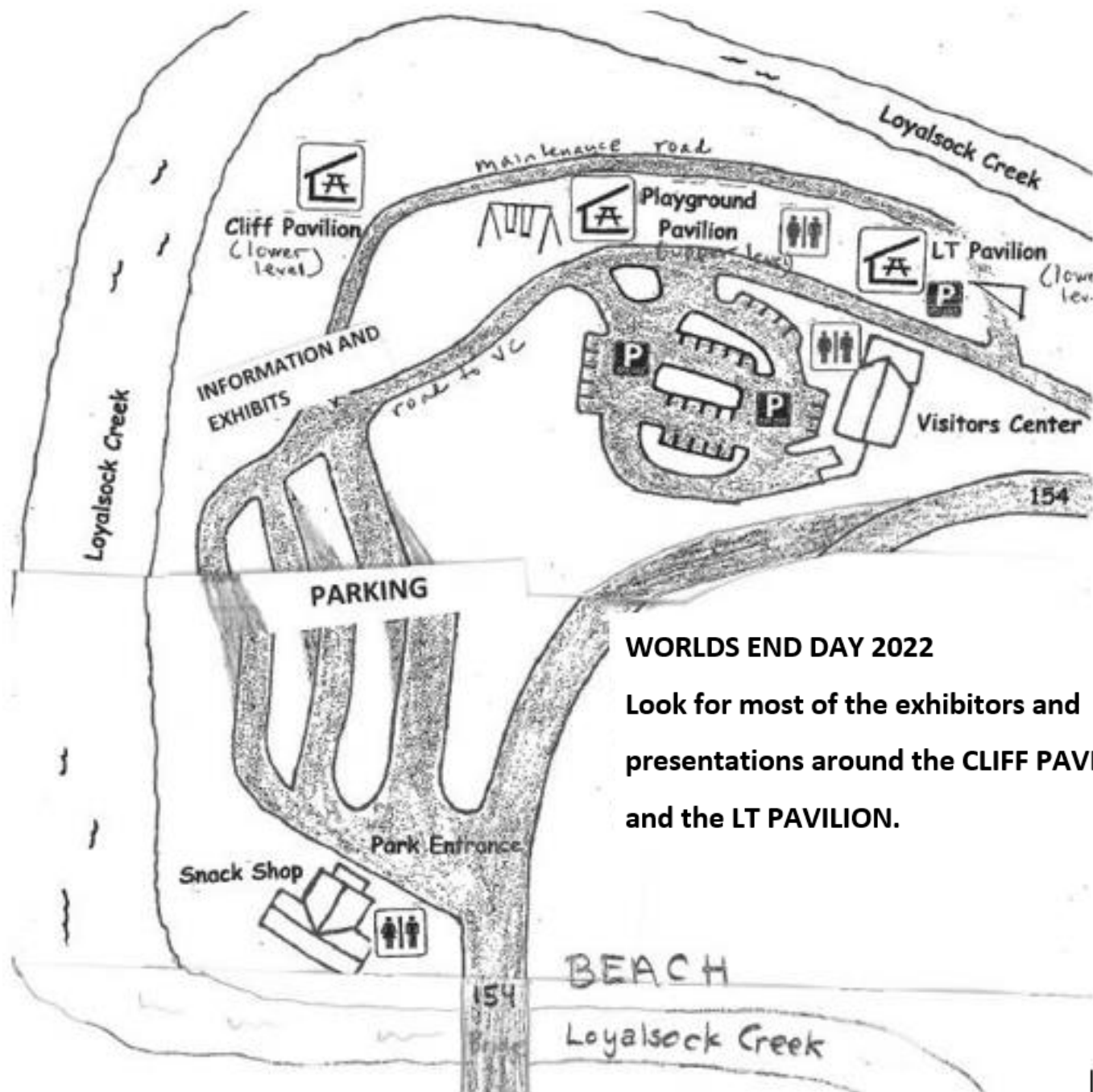
If you have any questions about today's events or about the activities of the Friends of Worlds End State Park, please stop by our table at the end of the parking lot. You can sign up for our free quarterly newsletter – *The Vista*, and learn more about membership and how to contribute.

Dave Kowalewski and Ruth Rode will be there much of the day ready to answer your local hiking questions. They will also have available their new hiking guide ***Falls & Views Loop: Exploring the Wildness of Worlds End State Park and Loyalsock State Forest***. They have spent the last three years using their combined decades of local trailblazing experience to create this new 70-page guide and map to more than 90 seasonal waterfalls and 40 views. Shorter loop options are also provided for those unable to complete the entire trail in one outing – including day-hike and 2-day hiking options – or even an afternoon hike. You will be guided to well-known destinations like Angel Falls, High Knob Overlook, and the Alpine Views... but will also see lesser-known and more remote sights like the falls along Coal Run, Scar Run, and Dutters Run!



The Friends of Worlds End State Park is a Chapter of the Pennsylvania Parks & Forests Foundation, which is a 501(c)(3) non-profit organization—contributions to which are tax deductible to the fullest extent of the law. No goods or services were received in exchange for this contribution. The official registration of the Pennsylvania Parks & Forests Foundation may be obtained from the Pennsylvania Department of State by calling toll free within Pennsylvania 1-800-732-0999. Registration does not imply endorsement.

WORLDS END DAY 2022



WORLDS END DAY 2022

Look for most of the exhibitors and presentations around the **CLIFF PAVILION** and the **LT PAVILION**.

To support the **Friends of Worlds End State Park**, check out the **SUPPORT** section of the Pennsylvania Parks and Forests Foundation website and designate your gift to the - **FRIENDS OF WORLDS END STATE PARK!**

<https://papakandsforests.org/friends-groups/donate-to-a-chapter/>

Or go to our website:

<https://www.friendsofworldsendsp.org/join-or-donate>